



Amberly

SUMMERHILL HOMES
COMMUNITIES OF DISTINCTION™

Community Story

Amberly by SummerHill Homes

An unparalleled opportunity in the heart of Silicon Valley.

At last, you've found it—that rare opportunity to own a spacious yet affordable home in the heart of the Silicon Valley.

Amberly by SummerHill Homes offers your busy family an unparalleled combination of distinctive, single-family homes in one of Silicon Valley's most desired locations.

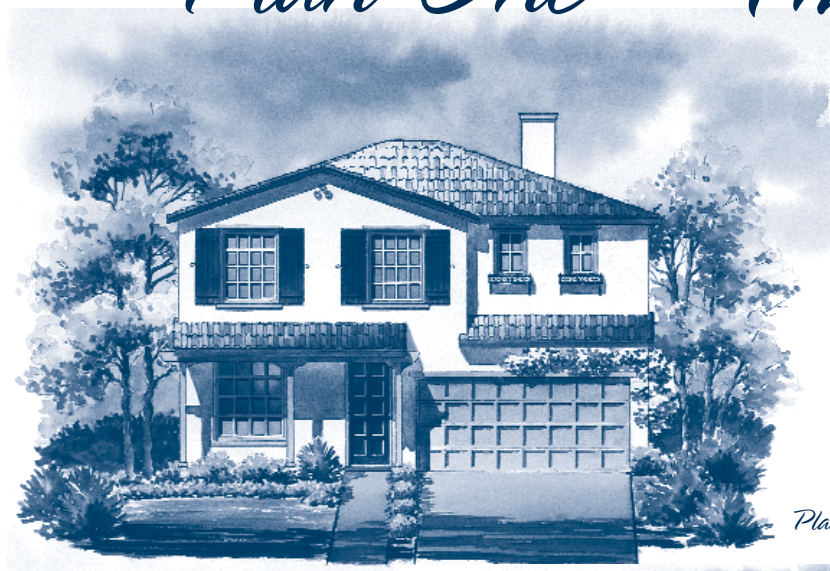
Ease your workday commutes with convenient access to employment centers. Highway 101 and the Capitol Expressway are just minutes away. And nearby, you'll find local shopping and services that simplify weeknight errands.

Crafted with pride by an award-winning builder, the homes at Amberly are designed to create timeless neighborhood character by offering diverse exterior designs reminiscent of Monterey, Spanish, and French architectural styles. Inside each home, 3 and 4-bedroom, family-sized floorplans are designed to offer the maximum usable living area possible in 1,807 to 2,230 generous square feet. Today's most sought-after features are highlighted by nostalgic touches throughout.

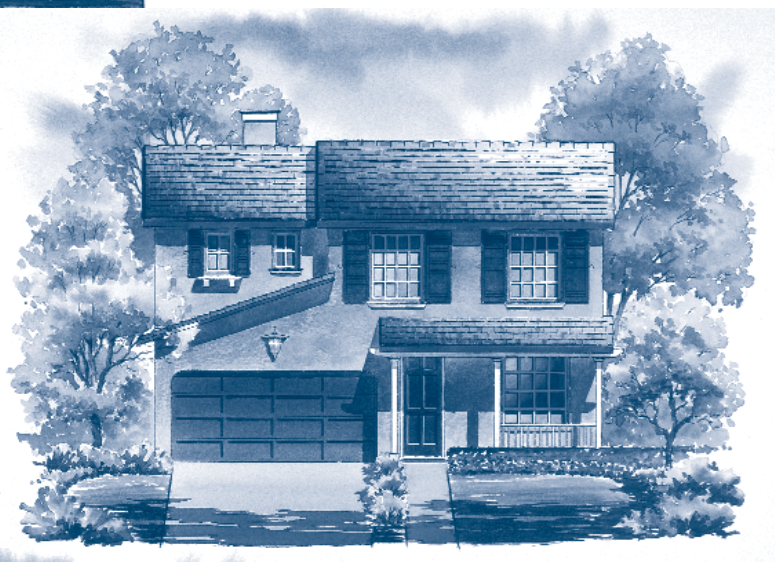
Choose Amberly by SummerHill Homes for its distinctive new homes and convenient location. Your family will enjoy a desirable home at a price that is hard to find in Silicon Valley.



Plan One – The Sofia



Plan 1, Elevation A



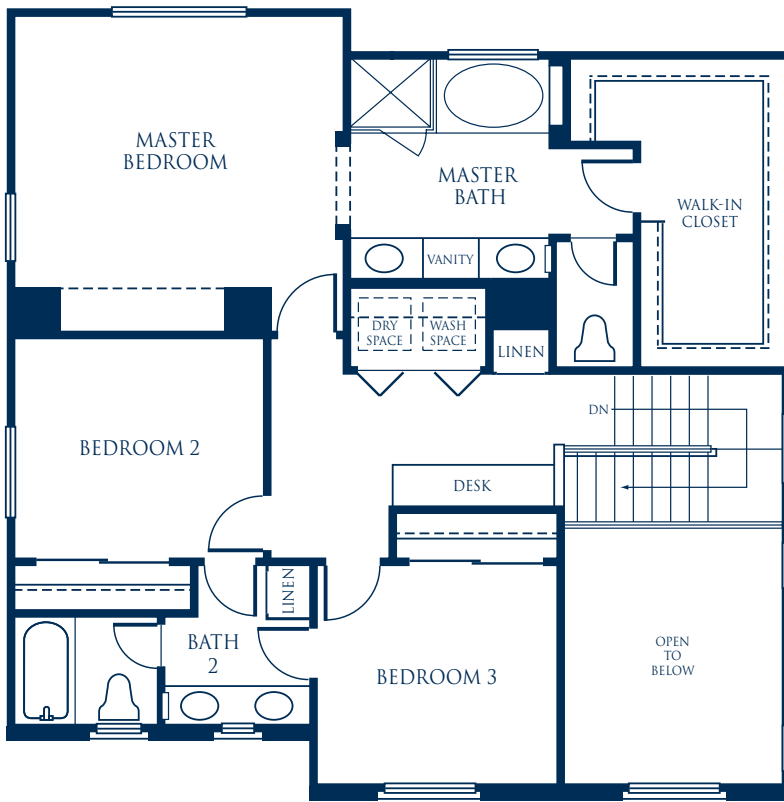
Plan 1, Elevation B



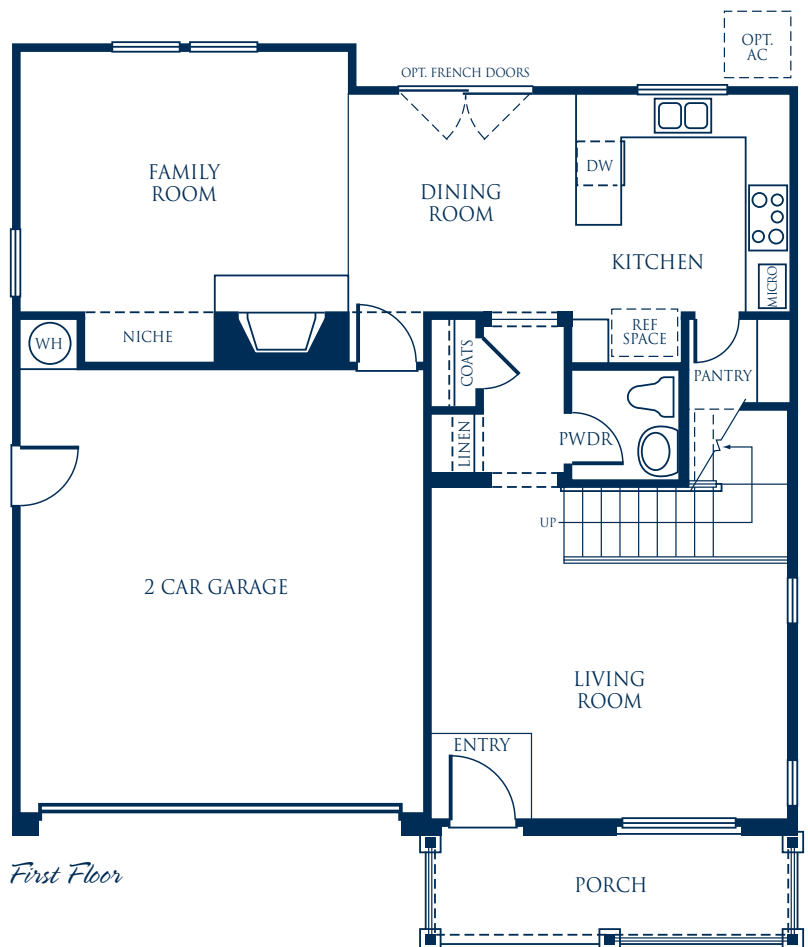
Plan 1, Elevation C



Ask your Sales Representative for more information on the choices available for each plan. SummerHill Homes reserves the right to alter floorplans, specifications, features, prices, and other information described in this brochure without notice or obligation. All room dimensions and home sizes are approximate and may vary depending upon elevation. Windows, room sizes, and layouts are subject to change per elevation or flex option. Ask your Community Sales Manager for details. All information contained in this brochure is qualified in its entirety by the Seller's Information Statement, which is incorporated herein by this reference. 5/01



Second Floor



First Floor

- Approximately 1,807 square feet
- 3 bedrooms
- 2½ baths
- 2-car garage



Plan Two – The Posada



Plan 2, Elevation A



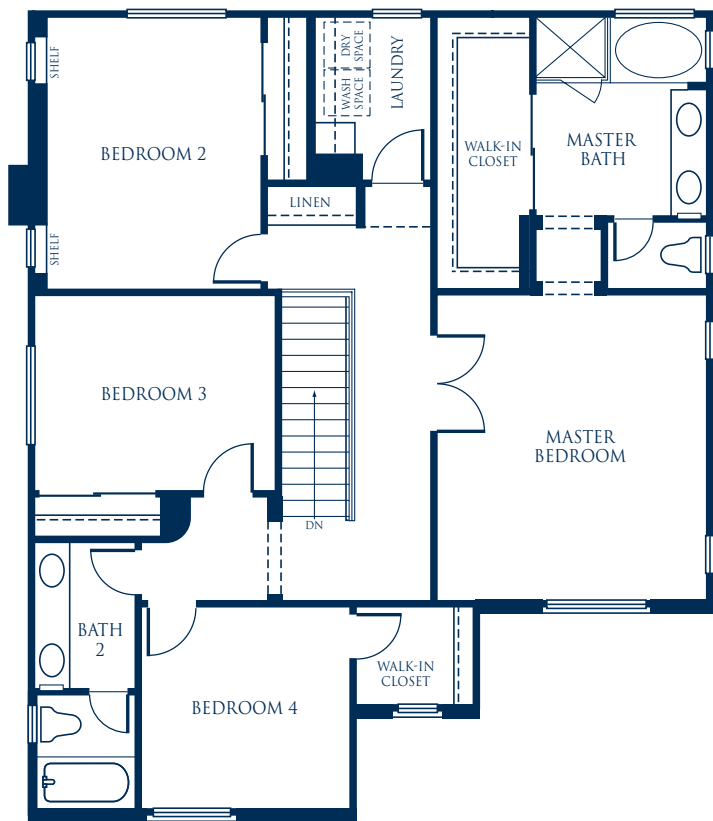
Plan 2, Elevation B



Plan 2, Elevation C

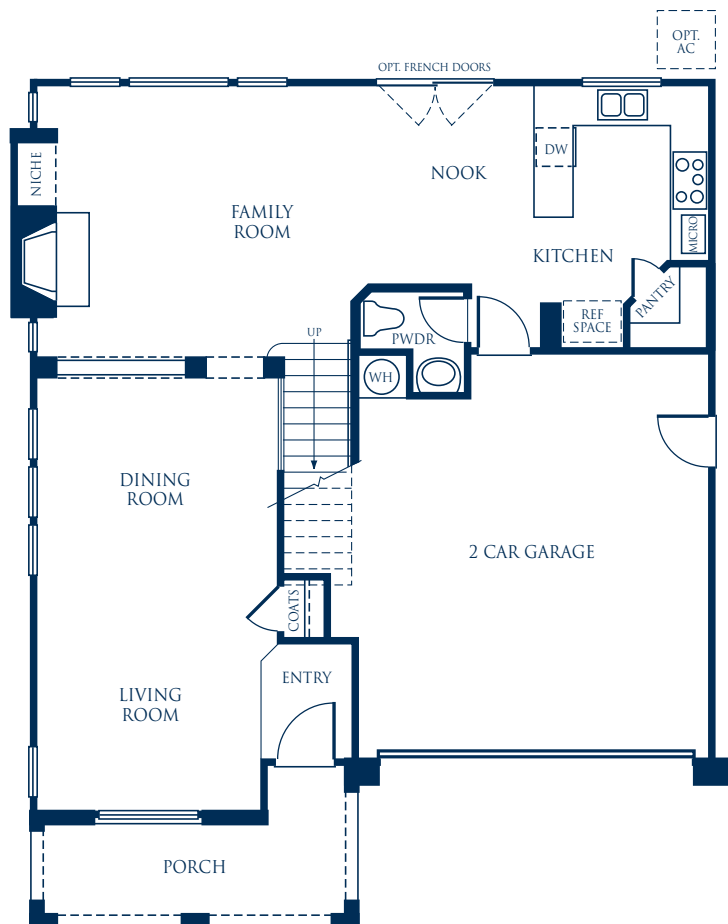


Ask your Sales Representative for more information on the choices available for each plan. SummerHill Homes reserves the right to alter floorplans, specifications, features, prices, and other information described in this brochure without notice or obligation. All room dimensions and home sizes are approximate and may vary depending upon elevation. Windows, room sizes, and layouts are subject to change per elevation or flex option. Ask your Community Sales Manager for details. All information contained in this brochure is qualified in its entirety by the Seller's Information Statement, which is incorporated herein by this reference. 5/01



Second Floor

- Approximately 2,178 square feet
- 4 bedrooms
- 2½ baths
- 2-car garage



First Floor



Plan Three – The Marseille



Plan 3, Elevation A



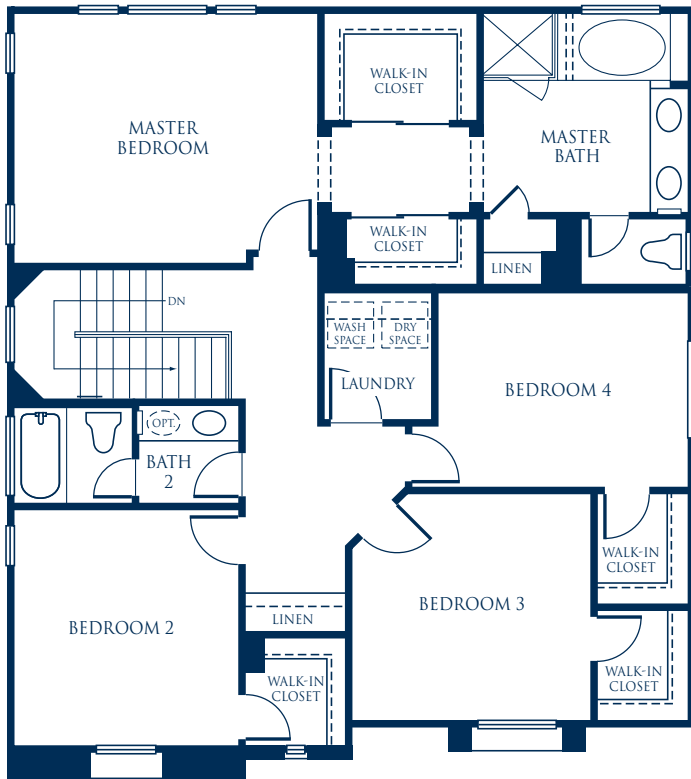
Plan 3, Elevation B



Plan 3, Elevation C

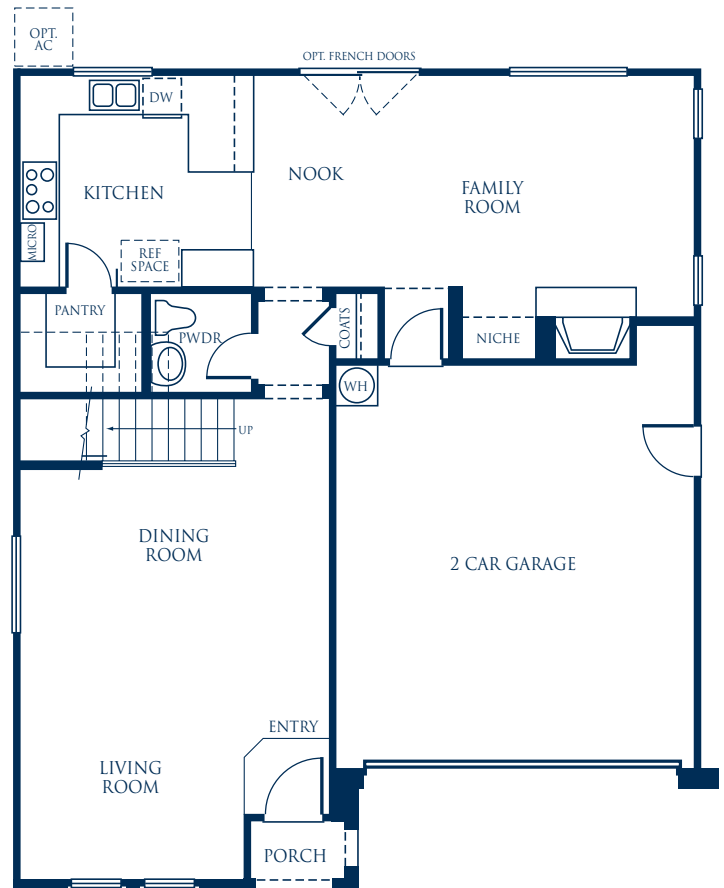


Ask your Sales Representative for more information on the choices available for each plan. SummerHill Homes reserves the right to alter floorplans, specifications, features, prices, and other information described in this brochure without notice or obligation. All room dimensions and home sizes are approximate and may vary depending upon elevation. Windows, room sizes, and layouts are subject to change per elevation or flex option. Ask your Community Sales Manager for details. All information contained in this brochure is qualified in its entirety by the Seller's Information Statement, which is incorporated herein by this reference. 5/01



Second Floor

- Approximately 2,239 square feet
- 4 bedrooms
- 2½ baths
- 2-car garage



Features

Distinctively Different Exteriors

At SummerHill Homes, we believe a great home begins with timeless design. We've embellished these homes with tasteful details that will provide years of enjoyment and a feeling of pride every time you come home.

- Durable tile roof
- Spanish, French, and Monterey-style architecture in the award-winning SummerHill Homes tradition
- Inviting front porches, per plan
- Raised-panel, solid-core, fiberglass entry door with antique brass hardware
- Two-car garage (drywall and taped) with steel roll-up sectional door, automatic opener, and two remotes
- Dual-glazed vinyl windows and sliding glass doors
- Front-yard landscaping and automatic irrigation system
- Side and rear-yard redwood fencing, varies per homesite

Elegant Interiors

High ceilings and plenty of windows make interior spaces light and inviting. Rooms are arranged to keep the family close, yet also provide plenty of privacy.

- Ceramic tile flooring in entry
- Dramatic volume ceilings, per plan
- White-painted stair system with oak handrail
- Gas fireplace with glass door enclosure
- Raised-panel "Colonist" interior doors and closet doors
- Chrome door hardware, per plan
- Radius corners in select locations
- Light, knockdown-texture wall finish; semi-gloss paint in baths, laundry, and kitchen; flat wall paint in all other rooms

Gourmet Kitchens

The kitchen is the "heart of the home," a place for the family to gather and share the events of the day.

- Recessed-panel gold oak cabinetry with white vinyl interiors and concealed hinges
- Hand-set, ceramic tile countertops with 6"-tile backsplash
- Full ceramic tile backsplash behind cooktop
- Kohler® cast iron, enamel finish, dual-compartment kitchen sink
- Price Pfister® chrome faucet and separate vegetable sprayer
- ½ h.p. garbage disposal
- Whirlpool™ appliances available in black or white:
 - 36" glass five-burner gas cooktop with sealed burners
 - 30" built-in, under counter, self-cleaning oven
 - 36" built-in microwave/hood combination over cooktop
- Deluxe five-cycle dishwasher
- Refrigerator space plumbed for icemaker
- Spacious storage pantry, per plan
- Recessed overhead lighting and convenient under cabinet fluorescent lighting
- Durable no-wax vinyl flooring

Private Master Suites

Welcome to your private domain. Enjoy master suites that surround you with comfort and offer a welcome haven from your busy day.

- Oval acrylic tub with cultured marble surround
- Separate shower with clear glass enclosure and cultured marble surround
- Cultured marble vanity with bullnose edge and dual china basins
- Price Pfister® polished chrome faucets with lever handles
- Oak cabinetry
- Recessed medicine cabinet
- Walk-in closets, per plan
- Compartmentalized water closet

Other Fine Features

We've included an array of "hidden" features for your convenience and comfort.

- Individualized decorator lighting fixtures and recessed lighting, per plan
- Telephone outlets in master suite, kitchen, and secondary bedrooms; CAT-5 wired for two lines, can accommodate up to four lines
- Cable TV outlets provided in master suite, family room, and secondary bedrooms
- Interior laundry area with upper storage cabinets and gas dryer hookups
- 12" x 12" ceramic tile entryway
- 28 oz. nylon wall-to-wall carpet with stain guard and ½ lb. re-bond carpet pad, per plan
- Resilient vinyl flooring in water closet areas and laundry room

Customizing Options and Upgrades

We are proud to offer an extensive Custom Choices™ options program to personalize your home to fit your individual lifestyle.

- Gourmet kitchen appliances
- Carpet, hardwood, tile, and natural stone flooring
- Textured and painted garage interior
- Stained stair rails
- Decorator selected tile and granite countertops
- Decorator selected tile and marble master bath countertops, tub, and shower surrounds
- Split-finish plumbing fixtures
- Additional telephone jacks with CAT-5 home runs
- Additional cable television outlets
- Gourmet kitchen faucet
- Decorator selected upgrade lighting packages
- Central air conditioning
- Mirrored wardrobe doors
- Additional cabinet finishes and styles selections
- Optional TV niche cabinets, per plan
- OnQ™ wiring system
- Security system



Ask your Sales Representative for more information on the choices available for each plan. SummerHill Homes reserves the right to alter floorplans, specifications, features, prices, and other information described in this brochure without notice or obligation. All room dimensions and home sizes are approximate and may vary depending upon elevation. Windows, room sizes, and layouts are subject to change per elevation or flex option. Ask your Community Sales Manager for details. All information contained in this brochure is qualified in its entirety by the Seller's Information Statement, which is incorporated herein by this reference. 5/01

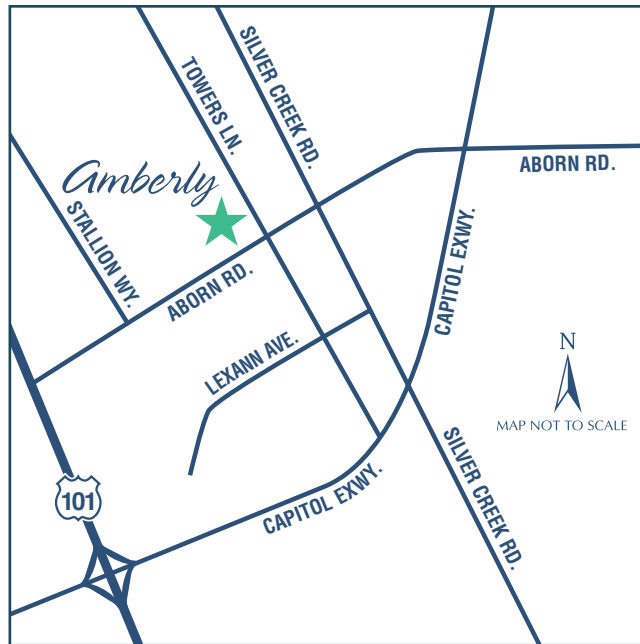
Builder's Story

SummerHill Homes has created a tradition of well-planned neighborhoods with dramatic architectural styling built in superior settings throughout the San Francisco Bay Area. SummerHill's new communities are distinguished by their rich character and exceptional attention to detail, lending to the enduring quality of all its homes.

For over 24 years, SummerHill Homes' new communities have earned homeowner satisfaction and significant industry recognition, including several Best in American Living Awards from the National Association of Home Builders, numerous Gold Nugget Awards at the Pacific Coast Builders' Conference, and several features in national magazines including Builder, Professional Builder, and Better Homes and Gardens.

SUMMERHILL HOMES
COMMUNITIES OF DISTINCTION™





*1549 Aborn Road
San Jose, CA 95121
408-223-0182
Fax: 408-223-0183*

www.summerhillhomes.com

SUMMERHILL HOMES
COMMUNITIES OF DISTINCTION™

