



Echelon
PALO ALTO



*Every day is filled with the pleasures
of Palo Alto. Here at Echelon.*

Live at Echelon in Palo Alto. Work and play are within reach at this new neighborhood of upscale condominiums. From the incredible shopping and world-class dining to renowned education, the overall culture offered in Palo Alto lets you create a lifestyle uniquely you.

Echelon offers sophisticated living in vibrant Palo Alto close to all the amenities you love. Featuring three home designs with two to three bedrooms and approximately 1,148 to 1,629 square feet, you will be sure to find a home that's right for you at Echelon by SummerHill Homes.

Shopping and dining opportunities abound at Echelon with Midtown Palo Alto, University Avenue in downtown Palo Alto, Stanford Shopping Center, Castro Street in Mountain View, and downtown Los Altos close by. Enjoy the outdoors at the stunning Palo Alto parks. Close to Silicon Valley via nearby transportation routes adds an easy commute to Palo Alto's appeal. And, the highly-regarded schools of the Palo Alto Unified School District offer children a wonderful education.

Whatever your lifestyle, Echelon's ideal location and distinctive community lets you create a life uniquely you.



9:30 a.m. Saturday
Meet for coffee on University Ave.
Then, who knows?

RESTAURANT GUIDE

PALO ALTO

- 1 Tamarine
- 2 Zibibbo
- 3 Pluto's
- 4 The Cheesecake Factory
- 5 La Strada
- 6 Satura Cakes
- 7 Three Seasons
- 8 Evvia Estiatorio
- 9 Patxi's Chicago Pizza
- 10 Nola
- 11 Pizza My Heart
- 12 Palo Alto Creamery
- 13 Mantra
- 14 Gordon Biersch
- 15 Buca di Beppo
- 16 Empire Tap Room
- 17 St. Michael's Alley
- 18 Mike's Cafe

MOUNTAIN VIEW

- 1 Xanh
- 2 Vaso Azzurro
- 3 Amarin Thai Cuisine
- 4 Zucca Ristorante
- 5 Tied House
- 6 Chez TJ
- 7 Ramen House Ryowa
- 8 Nami Nami
- 9 Taqueria Los Charros
- 10 Dana St. Roasting Co.
- 11 Sushitomi
- 12 Shiva's
- 13 Cascal Tapas Bar
- 14 Casa Lupe
- 15 Kirin
- 16 Starbucks
- 17 Amici's East Coast Pizzeria
- 18 Amber Cafe
- 19 Peet's Coffee & Tea
- 20 Sushi Tei



Living at Echelon

When you live at Echelon, the prestige of a Palo Alto address comes with an extra measure of convenience. Not only are you close to the high fashion of Stanford Shopping Center and the upscale boutiques of University Avenue, you're also close to the great walk-around shopping-eating-cultural experience of Mountain View's Castro Street.

How do you like to spend your free time? Strolling the salt marsh or cycling the hills? High culture or high fashion? Sushi or Stanford football? It's all close to home. Enjoy!



Map is artist's conception and not to scale. SummerHill Homes reserves the right to alter floorplans, specifications, features, prices, and other information described in this brochure without notice or obligation. All room dimensions and home sizes are approximate and may vary depending upon elevations. Window sizes and locations, room sizes, floorplans, and patio/deck layouts are subject to change per plan location. Ask your Community Sales Team for details. All information contained in this brochure is qualified in its entirety by the Seller's Information Statement, which is incorporated herein by the reference. 5/08



Distinctive
Architecture

Clean lines and sleek details give these buildings that Palo Alto panache. Private walled patios and decks invite outdoor living. This is architecture that is timeless, yet very much in the moment.


*7:00 p.m. Thursday
A glass of wine to toast "the new Friday."*



Building B



Building C

 Renderings are artist's conception. SummerHill Homes reserves the right to alter floorplans, specifications, features, prices, and other information described in this brochure without notice or obligation. All room dimensions and home sizes are approximate and may vary depending upon elevations. Window sizes and locations, room sizes, floorplans, and patio/deck layouts are subject to change per plan location. Ask your Community Sales Team for details. All information contained in this brochure is qualified in its entirety by the Seller's Information Statement, which is incorporated herein by the reference. 5/08

Genuine Neighborhood



Echelon is designed to capture the feel of a genuine neighborhood. Mature trees, walkways, open spaces, decks and balconies, and quiet streets are all part of the community.



Residence One
2 Bedrooms
2½ Baths
Approx. 1,148 sq. ft.

Residence Two
3 Bedrooms
3 Baths
Approx. 1,310 sq. ft.

Residence Three
3 Bedrooms
2½ Baths
Approx. 1,629 sq. ft.

 New Tree
 Existing Tree

Artist's conception. Landscaping shown is for illustration purposes only and may not be an exact representation of actual landscaping. SummerHill Homes reserves the right to alter floorplans, specifications, features, prices, and other information described in this brochure without notice or obligation. All room dimensions and home sizes are approximate and may vary depending upon elevations. Window sizes and locations, room sizes, floorplans, and patio/deck layouts are subject to change per plan location. Ask your Community Sales Team for details. All information contained in this brochure is qualified in its entirety by the Seller's Information Statement, which is incorporated herein by the reference. 5/08

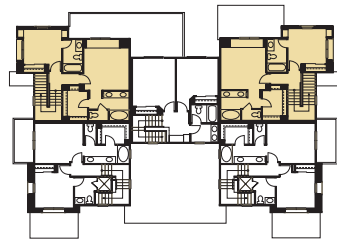


Residence One

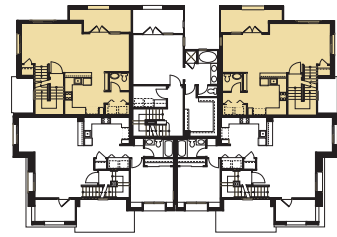
2 Bedrooms, 2½ Baths

2-Car Tandem Garage

Approximately 1,148
Square Feet



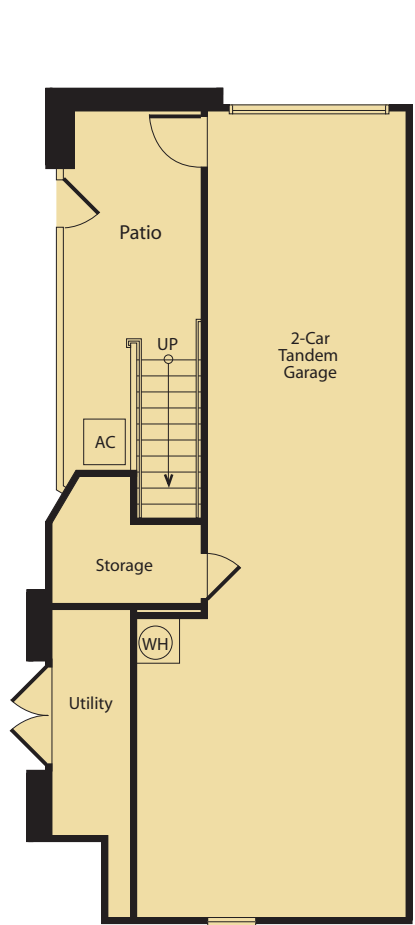
Third Floor



Second Floor



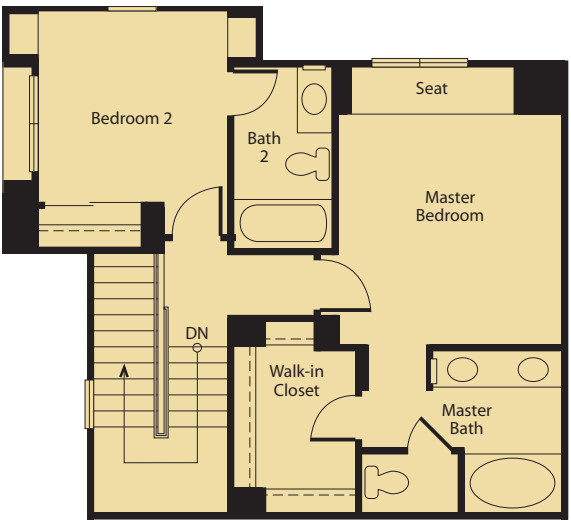
First Floor



First Floor




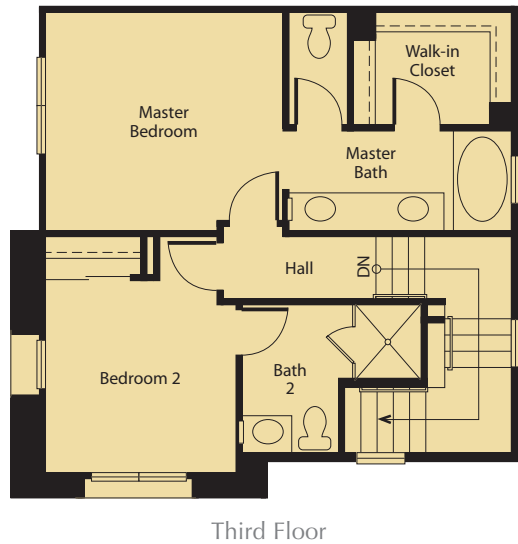
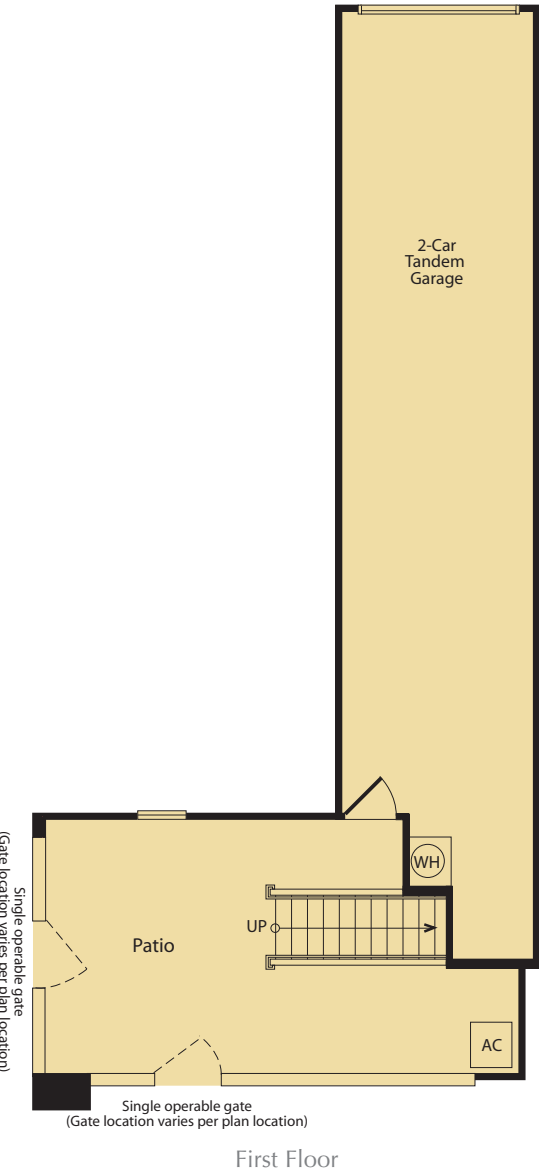
Second Floor



Third Floor

*11 p.m. Tuesday Night
Was my day hectic? Who even remembers!*

 SummerHill Homes reserves the right to alter floorplans, specifications, features, prices, and other information described in this brochure without notice or obligation. All room dimensions and home sizes are approximate and may vary depending upon elevations. Window sizes and locations, room sizes, floorplans, and patio/deck layouts are subject to change per plan location. Ask your Community Sales Team for details. All information contained in this brochure is qualified in its entirety by the Seller's Information Statement, which is incorporated herein by the reference. 5/08



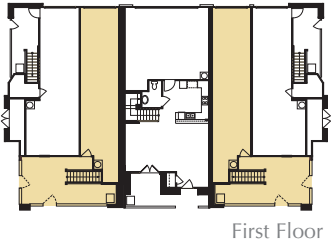
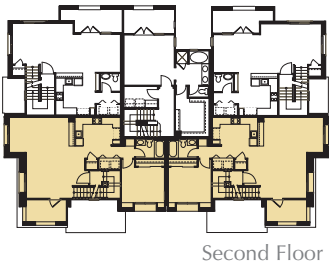
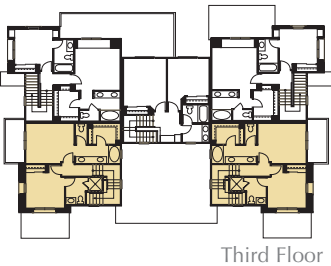
Residence Two

3 Bedrooms, 3 Baths

2-Car Tandem Garage

Approximately 1,310
Square Feet

*10:00 a.m. Wednesday
I think I'll work from
home today.*



 SummerHill Homes reserves the right to alter floorplans, specifications, features, prices, and other information described in this brochure without notice or obligation. All room dimensions and home sizes are approximate and may vary depending upon elevations. Window sizes and locations, room sizes, floorplans, and patio/deck layouts are subject to change per plan location. Ask your Community Sales Team for details. All information contained in this brochure is qualified in its entirety by the Seller's Information Statement, which is incorporated herein by the reference. 5/08

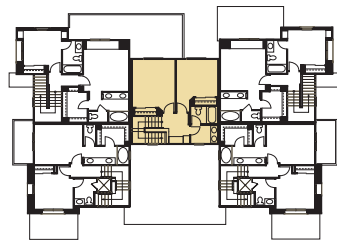


Residence Three

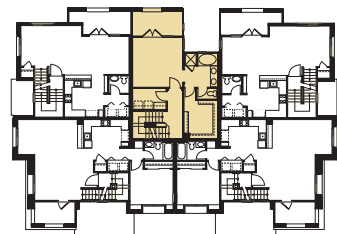
3 Bedrooms, 2½ Baths

2-Car Garage

Approximately 1,629
Square Feet



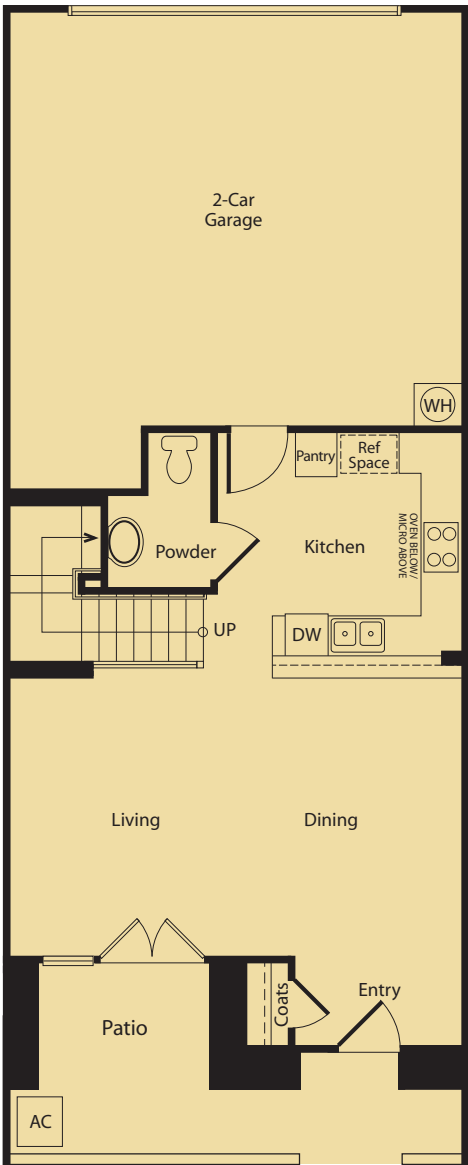
Third Floor



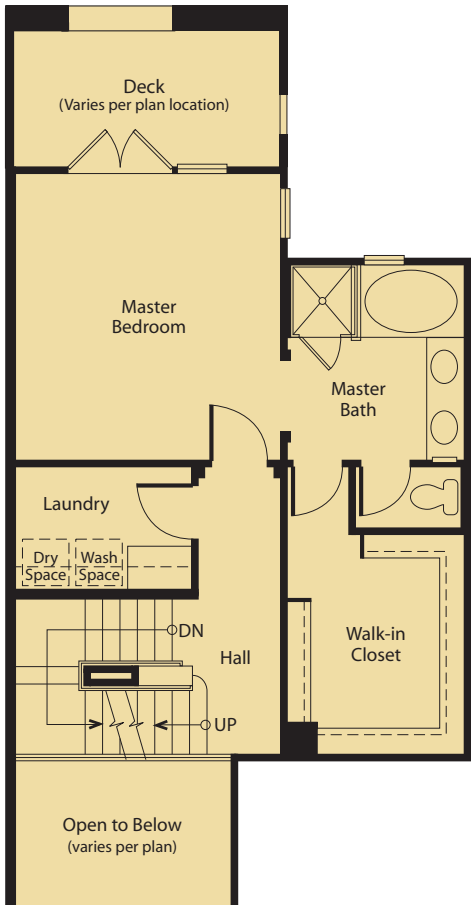
Second Floor



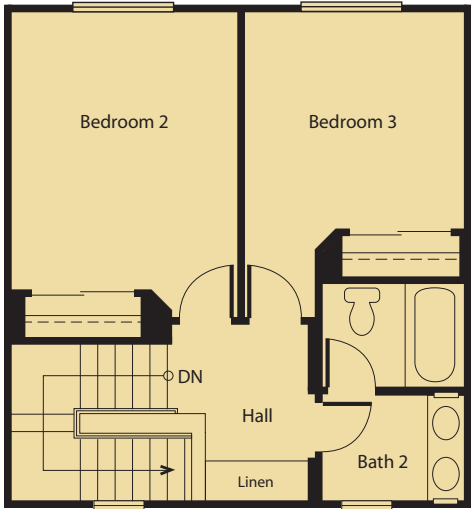
First Floor



First Floor




Second Floor



Third Floor

*8:00 p.m. Friday
Dinner for eight? Come on over!*

 SummerHill Homes reserves the right to alter floorplans, specifications, features, prices, and other information described in this brochure without notice or obligation. All room dimensions and home sizes are approximate and may vary depending upon elevations. Window sizes and locations, room sizes, floorplans, and patio/deck layouts are subject to change per plan location. Ask your Community Sales Team for details. All information contained in this brochure is qualified in its entirety by the Seller's Information Statement, which is incorporated herein by the reference. 5/08





Features

Community

- 75 upscale condominiums in twelve contemporary buildings
- Beautifully landscaped common areas including perimeter outdoor seating, garden with rock sculptures, garden walk, children's play area, barbecue area and community on-site parking

Distinctively Different Exteriors

- Beautiful and durable 3-coat stucco and Hardisiding® with contemporary metal and wood detailing
- Handsome 40-year high profile composition shingle roof
- Stunning architectural eight-foot entry door with Venetian bronze handle for an elegant first impression
- Andersen® French doors
- Two-car or tandem garage with roll-up sectional door, automatic garage door opener, and two remotes, per residence
- Inviting tiled front patio and spacious deck, per residence

Inspiring Interiors

- Hardwood laminate flooring in entry
- Stain-resistant carpet for impressive style and durability
- Stairs with painted handrail, newels, and balusters
- Lightly-textured wall finish with two-color paint for richness and character
- Lighting package with Decora® light switches to complement your home
- Raised two-panel interior doors with polished chrome door levers
- Volume ceilings in Residence Three, per residence location

Gourmet Kitchens

- Granite slab countertops with full backsplash behind cooktop
- Kohler® stainless steel kitchen sink with Kohler® gourmet polished chrome pull-out spray faucet

- Beautiful GE® stainless steel with black appliances include:
 - 30" four-burner gas range with self-cleaning oven
 - Built-in micro/hood over range
 - Deluxe multi-cycle dishwasher
- Maple shaker panel cabinetry in rich caramel finish with chrome knobs offer adjustable upper shelves, pull-out lower shelves next to cooktop, white interior finish, concealed hinges, and easy-glide drawers
- Hardwood laminate flooring in kitchen

Private Master Suites

- Oversized soaking tub with cultured marble surround and clear, glass shower enclosure, per residence
- Separate shower with clear, glass enclosure and cultured marble surround, Residence Three only
- Maple shaker panel cabinetry in rich caramel finish and Crema Marfil marble slab and slab vanity countertop with backsplash

- Dual china sinks with Kohler® faucets in polished chrome finish
- Hand-set 12"-square ceramic tile flooring
- Large walk-in closets with mirrored door

Secondary Baths

- Tub or shower with cultured marble surround, per residence
- Maple shaker panel cabinetry in rich caramel finish with chrome knobs and cultured marble vanity top, top-set china sinks, and polished chrome faucets
- Hand-set 12"-square ceramic tile flooring
- Powder room offers Kohler® pedestal sink with polished chrome faucet, oval beveled-edge mirror, and ceramic tile flooring, per residence

Features



Energy-Efficient And Technology Features

- Homes meet ENERGY STAR® and ComfortWise® program guidelines increasing energy efficiency of the home
- Dual-pane vinyl windows with Low-E glass for improved energy savings
- All exterior doors feature full weather stripping
- Dual-zone, high-efficiency forced-air gas furnace with electronic ignition and energy-efficient electronic set-back thermostat
- Air conditioning
- Energy-saving 50-gallon gas water heater
- Smoke detectors wired throughout the home for safety
- Gas and electric dryer hook-ups
- Structured wiring throughout home for high-speed networking including Category 5 cable with universal outlets in the living room and all bedrooms, per residence

Custom Choices™ Options Program

Our Design Studio Team may have pre-selected options and upgrades for certain homes at Echelon. Contact the Community Sales and Design Studio Teams about available optional features.

- Decorative tile, granite tile, marble tile, granite slab, and marble slab for countertops and surrounds
- Choice of wood, finishes, and cabinet door styles
- Glass upper cabinets in kitchen in select pre-determined locations, per residence
- GE Profile®, GE Monogram®, Wolf® and Sub-Zero® stainless steel kitchen appliances
- Additional kitchen sink options as shown in Design Studio, per residence
- Plumbing fixture finish in kitchen and baths
- Instant hot water dispenser or combo instant hot and water filter at kitchen sink

- Solid core, raised two-panel interior doors
- Choice of satin nickel or Venetian bronze finish on interior door hardware
- Designer-selected interior paint options
- Carpet, pad, tile, and hardwood flooring upgrades
- Stain-grade handrails to complement cabinets
- Crown molding
- Heavy-duty shower enclosure in master bath, per residence
- Decorative mirrors in master bath and powder room
- Clear glass tub enclosure in secondary baths
- Mirrored closet doors in secondary bedrooms
- Light fixture selections for dining, kitchen, and bedrooms
- Pre-wire for flat panel television

- Pre-wire for security system
- Full security system
- Pre-wire for ceiling fans in master bedroom
- Ceiling fan
- Additional data wiring, multicom ports and optional phone jacks
- Paint and texture garage interior



SummerHill Homes has created a tradition of well-planned neighborhoods with dramatic architectural styling built in superior settings throughout the San Francisco Bay Area. SummerHill Homes' new communities are distinguished by their rich character and exceptional attention to detail, lending to the enduring quality of all its homes.

For over 30 years, SummerHill Homes' communities have earned homeowner satisfaction and significant industry recognition, including several Best in American Living Awards from the National Association of Home Builders, numerous Gold Nugget Awards at the Pacific Coast Builders Conference, and several features in national magazines including Builder, Professional Builder, and Sunset Magazine.



1101 East Meadow Drive
Palo Alto, CA 94303

Phone: (650) 812-0559
Fax: (650) 812-0542

www.EchelonPaloAlto.com
echelonsales@shhomes.com

