



Lane Woods

BY SUMMERHILL HOMES

Unbridled elegance in an incomparable setting.

Located among heritage trees next to the *Sunset* magazine campus in Menlo Park, Lane Woods takes its name from the Lane family, longtime publishers of the magazine and original landscapers of its beautiful grounds. This inspired collection of just 32 residences – including the 2008 *Sunset* Idea House – is designed and detailed to complement the natural beauty of its setting.

Each distinctive two-story residence, designed to be GreenPoint Rated, is generously sized, with up to approximately 2,998 square feet of living space. These are homes that bring the family close, yet provide plenty of privacy for all. Inviting porches and patios encourage indoor/outdoor living and entertaining. Features such as clad wood windows, granite slab countertops, stainless steel appliances, and a neighborhood park that was originally *Sunset's* courtyard elevate these homes to the extraordinary.

For all its scenic splendor, your home address couldn't be more convenient. Midway between San Francisco and San Jose, Lane Woods enjoys easy access to highways 101, 280, and El Camino Real and CalTrain. The charming downtowns of Menlo Park and Palo Alto are minutes away, as are world-renowned Stanford University and Stanford Shopping Center. Also close are the highly-regarded schools of the Menlo Park City Elementary School and Sequoia Union High School Districts, and the family adventures of Burgess Park.

The good life is recreated in every gracious detail at Lane Woods. Enjoy.

Lane Woods

BY SUMMERHILL HOMES



Residence One (Preliminary)

3 Bedrooms, 2½ Baths, 2-Car Garage

Approximately 2,062 to 2,089 Square Feet



Residence 1A



Residence 1B



Residence 1C



First Floor

All renderings are artist's conception.



SummerHill Homes reserves the right to alter floorplans, specifications, features, prices, and other information described in this brochure without notice or obligation. All room dimensions and home sizes are approximate and may vary depending upon elevations. Windows, room sizes and layouts are subject to change per elevation or flex option. Ask your Community Sales Team for details. All information contained in this brochure is qualified in its entirety by the Seller's Information Statement, which is incorporated herein by this reference. 3/08

Residence One (Preliminary)

3 Bedrooms, 2½ Baths, 2-Car Garage

Approximately 2,062 to 2,089 Square Feet



Second Floor



*Every opportunity for entertaining
can be found in this home...*

All renderings are artist's conception.



SummerHill Homes reserves the right to alter floorplans, specifications, features, prices, and other information described in this brochure without notice or obligation. All room dimensions and home sizes are approximate and may vary depending upon elevations. Windows, room sizes and layouts are subject to change per elevation or flex option. Ask your Community Sales Team for details. All information contained in this brochure is qualified in its entirety by the Seller's Information Statement, which is incorporated herein by this reference. 3/08

Residence Two (Model)

3 Bedrooms, 2½ Baths, 2-Car Garage

Optional Office, Optional Bedroom

Approximately 2,299 to 2,363 Square Feet



Residence 2A



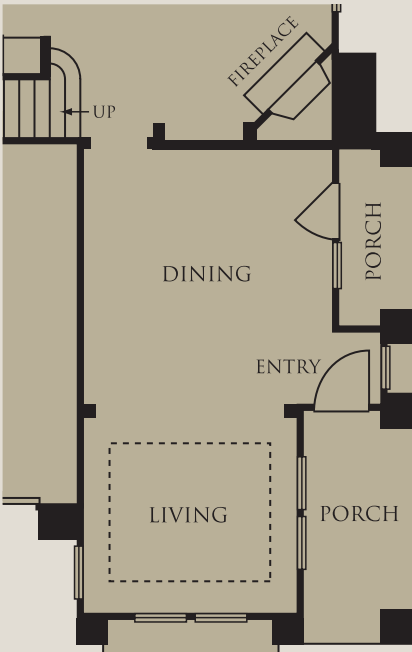
Residence 2B



Residence 2D



First Floor



First Floor Alternate
(As Shown in Model)

All renderings are artist's conception.



SummerHill Homes reserves the right to alter floorplans, specifications, features, prices, and other information described in this brochure without notice or obligation. All room dimensions and home sizes are approximate and may vary depending upon elevations. Windows, room sizes and layouts are subject to change per elevation or flex option. Ask your Community Sales Team for details. All information contained in this brochure is qualified in its entirety by the Seller's Information Statement, which is incorporated herein by this reference. 3/08

Residence Two (Model)

3 Bedrooms, 2½ Baths, 2-Car Garage

Optional Office, Optional Bedroom

Approximately 2,299 to 2,363 Square Feet



Residence 2A Alternate (Model)



Residence 2B Alternate

*Welcomes a parade of houseguests,
yet loves to pamper the immediate family...*

All renderings are artist's conception.



SummerHill Homes reserves the right to alter floorplans, specifications, features, prices, and other information described in this brochure without notice or obligation. All room dimensions and home sizes are approximate and may vary depending upon elevations. Windows, room sizes and layouts are subject to change per elevation or flex option. Ask your Community Sales Team for details. All information contained in this brochure is qualified in its entirety by the Seller's Information Statement, which is incorporated herein by this reference. 3/08

Residence Three (Model)

4 Bedrooms, 2½ Baths, 2-Car Garage

Optional Bedroom, Optional Loft

Approximately 2,392 to 2,429 Square Feet



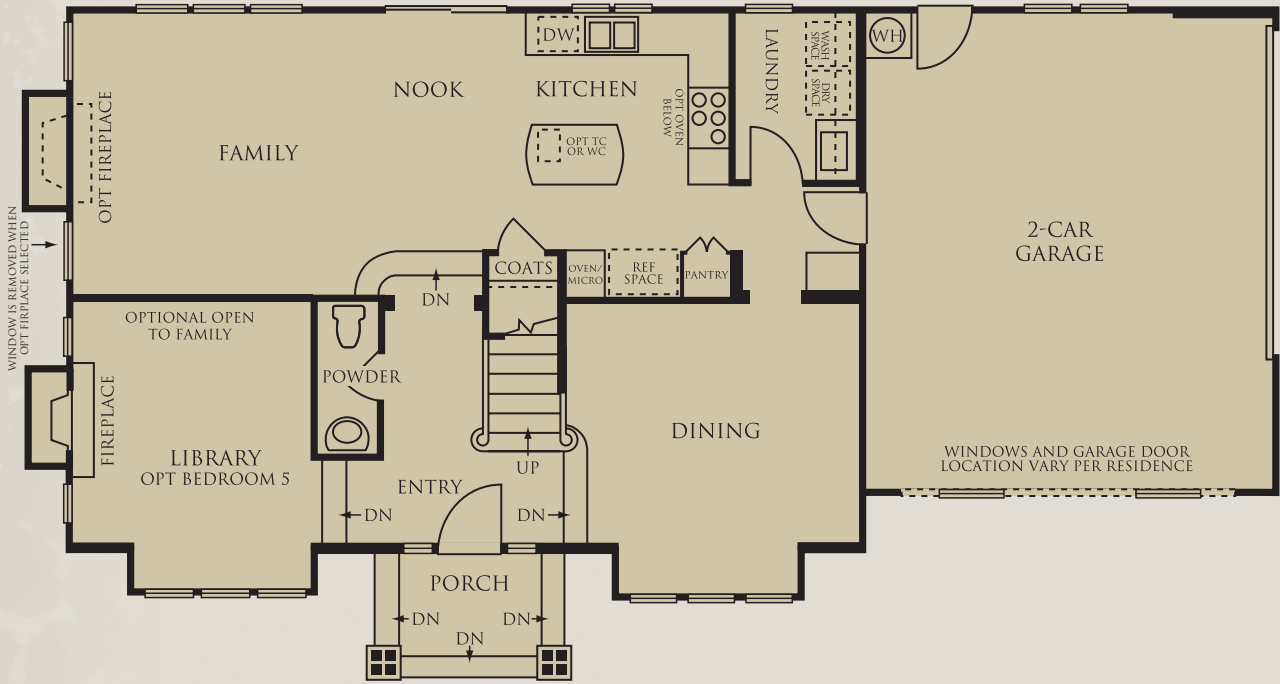
Residence 3A



Residence 3B



Residence 3D (Model)



First Floor



Optional Bedroom 5
with Bath 3 at Library

All renderings are artist's conception.



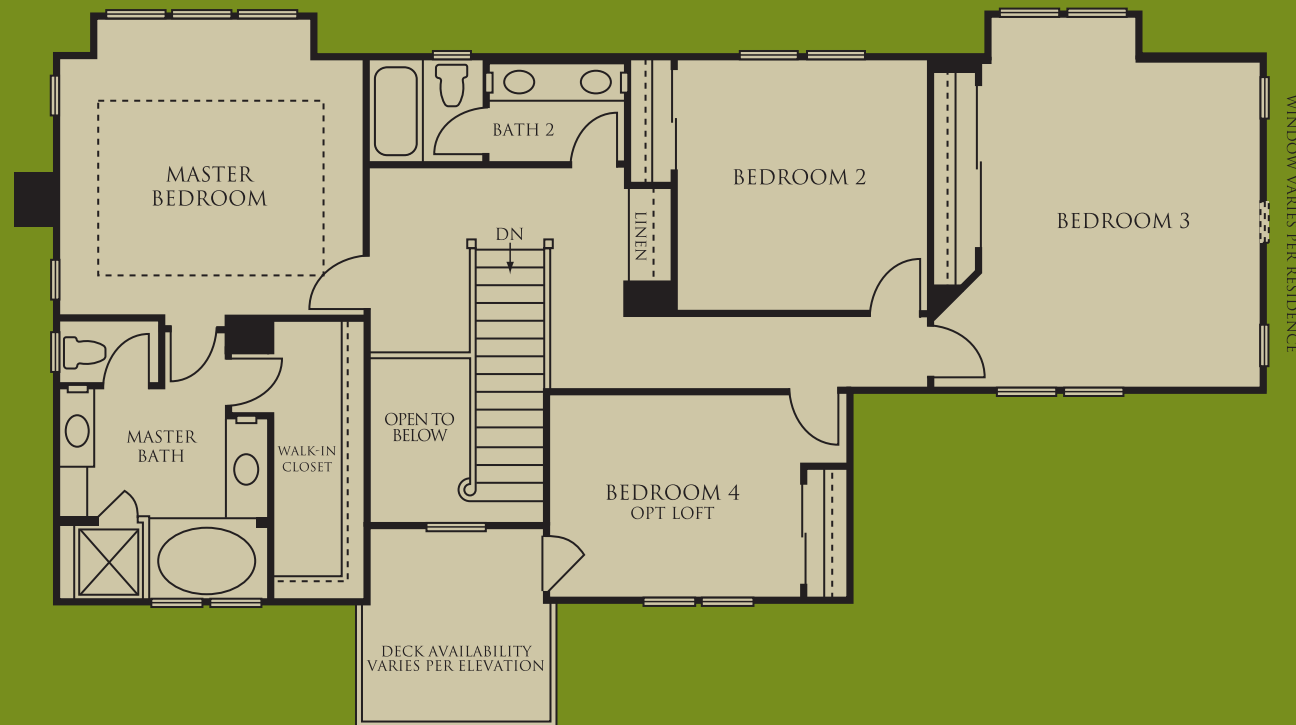
SummerHill Homes reserves the right to alter floorplans, specifications, features, prices, and other information described in this brochure without notice or obligation. All room dimensions and home sizes are approximate and may vary depending upon elevations. Windows, room sizes and layouts are subject to change per elevation or flex option. Ask your Community Sales Team for details. All information contained in this brochure is qualified in its entirety by the Seller's Information Statement, which is incorporated herein by this reference. 3/08

Residence Three (Model)

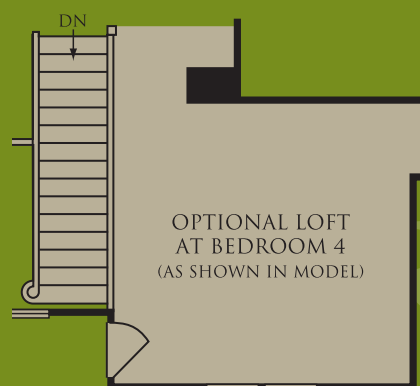
4 Bedrooms, 2½ Baths, 2-Car Garage

Optional Bedroom, Optional Loft

Approximately 2,392 to 2,429 Square Feet



Second Floor



Optional Loft
at Bedroom 4

*The essence
of easy living...*

All renderings are artist's conception.



SummerHill Homes reserves the right to alter floorplans, specifications, features, prices, and other information described in this brochure without notice or obligation. All room dimensions and home sizes are approximate and may vary depending upon elevations. Windows, room sizes and layouts are subject to change per elevation or flex option. Ask your Community Sales Team for details. All information contained in this brochure is qualified in its entirety by the Seller's Information Statement, which is incorporated herein by this reference. 3/08

Residence Three—Side Entry (Preliminary)

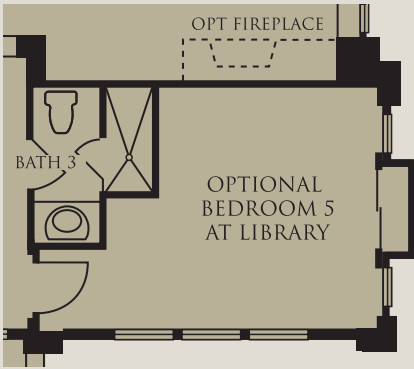
4 Bedrooms, 2½ Baths, 2-Car Garage

Optional Bedroom, Optional Loft

Approximately 2,399 Square Feet



First Floor



Optional Bedroom 5
with Bath 3 at Library



Residence 3A

All renderings are artist's conception.

SummerHill Homes reserves the right to alter floorplans, specifications, features, prices, and other information described in this brochure without notice or obligation. All room dimensions and home sizes are approximate and may vary depending upon elevations. Windows, room sizes and layouts are subject to change per elevation or flex option. Ask your Community Sales Team for details. All information contained in this brochure is qualified in its entirety by the Seller's Information Statement, which is incorporated herein by this reference. 3/08



Residence Three-Side Entry (Preliminary)

4 Bedrooms, 2½ Baths, 2-Car Garage

Optional Bedroom, Optional Loft

Approximately 2,399 Square Feet



Optional Loft
at Bedroom 4

Second Floor

*This home understands
your every mood...*

All renderings are artist's conception.



SummerHill Homes reserves the right to alter floorplans, specifications, features, prices, and other information described in this brochure without notice or obligation. All room dimensions and home sizes are approximate and may vary depending upon elevations. Windows, room sizes and layouts are subject to change per elevation or flex option. Ask your Community Sales Team for details. All information contained in this brochure is qualified in its entirety by the Seller's Information Statement, which is incorporated herein by this reference. 3/08

Residence Four (Preliminary)

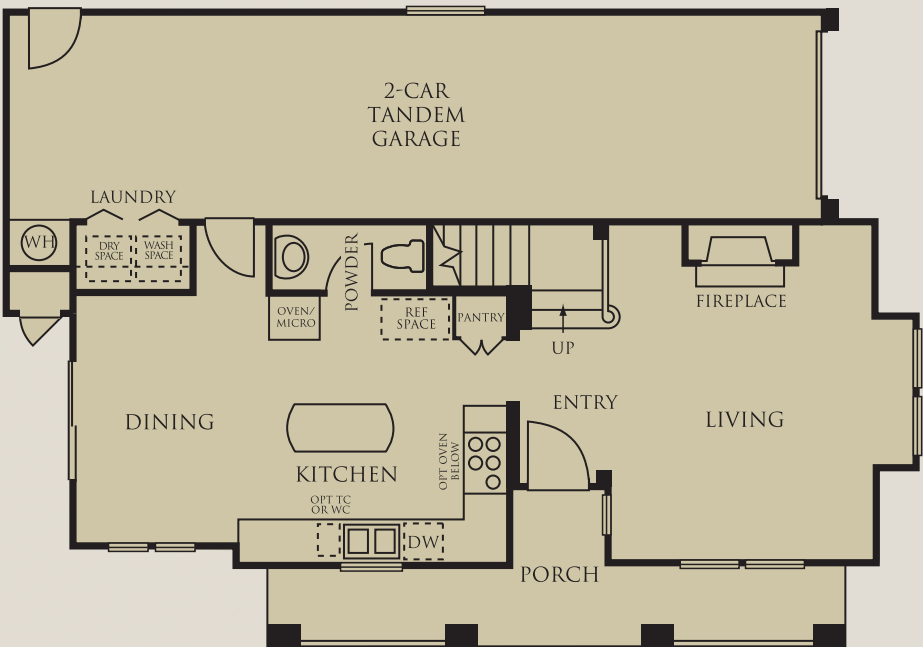
4 Bedrooms, 2½ Baths, 2-Car Tandem Garage

Optional Loft

Approximately 1,758 Square Feet



Residence 4D



First Floor

All renderings are artist's conception.



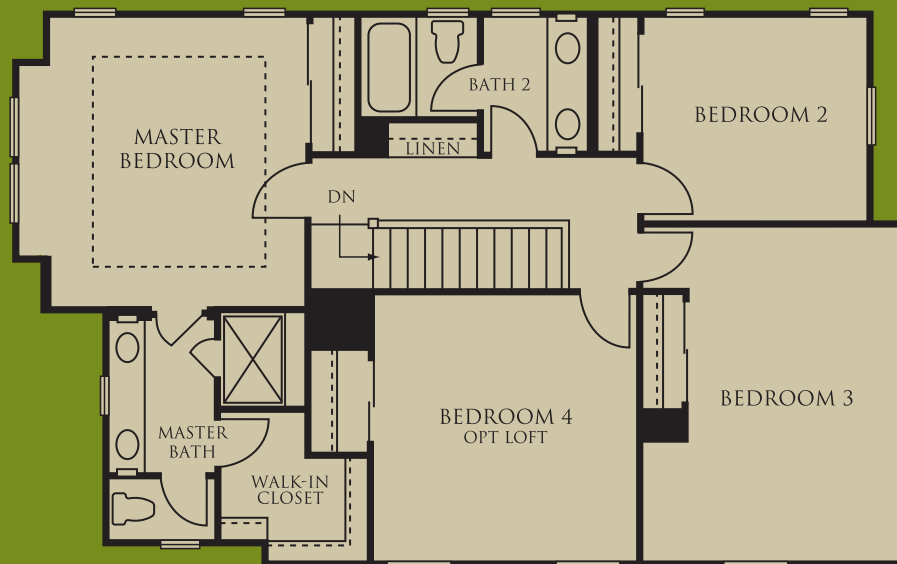
SummerHill Homes reserves the right to alter floorplans, specifications, features, prices, and other information described in this brochure without notice or obligation. All room dimensions and home sizes are approximate and may vary depending upon elevations. Windows, room sizes and layouts are subject to change per elevation or flex option. Ask your Community Sales Team for details. All information contained in this brochure is qualified in its entirety by the Seller's Information Statement, which is incorporated herein by this reference. 3/08

Residence Four (Preliminary)

4 Bedrooms, 2½ Baths, 2-Car Tandem Garage

Optional Loft

Approximately 1,758 Square Feet



Second Floor



Optional Loft
at Bedroom 4



*Quaint front porch
welcomes all to the home...*

All renderings are artist's conception.



SummerHill Homes reserves the right to alter floorplans, specifications, features, prices, and other information described in this brochure without notice or obligation. All room dimensions and home sizes are approximate and may vary depending upon elevations. Windows, room sizes and layouts are subject to change per elevation or flex option. Ask your Community Sales Team for details. All information contained in this brochure is qualified in its entirety by the Seller's Information Statement, which is incorporated herein by this reference. 3/08

Residence Five (Preliminary)

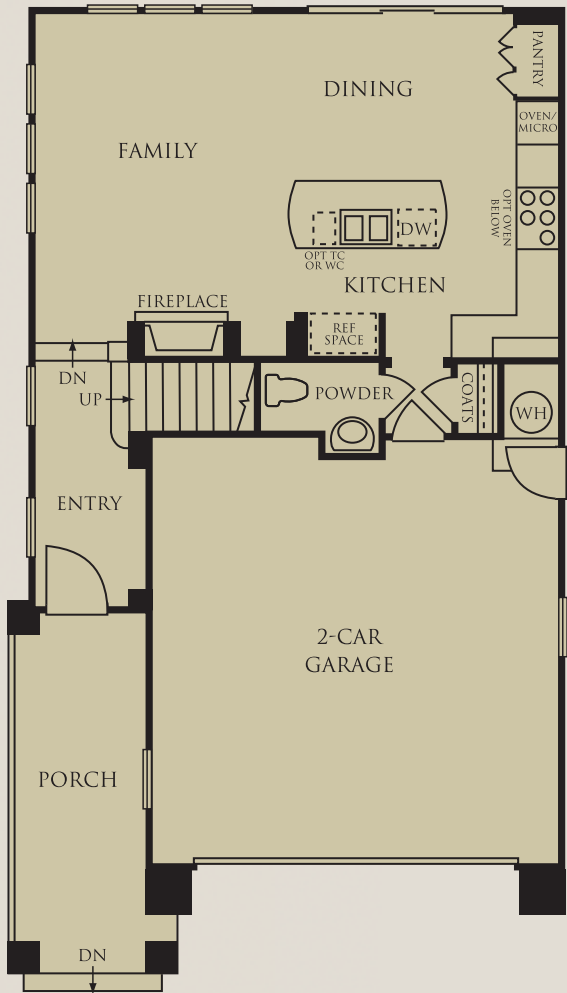
4 Bedrooms, 2½ Baths, 2-Car Garage

Optional Loft

Approximately 1,719 Square Feet



Residence 5B



First Floor

All renderings are artist's conception.



SummerHill Homes reserves the right to alter floorplans, specifications, features, prices, and other information described in this brochure without notice or obligation. All room dimensions and home sizes are approximate and may vary depending upon elevations. Windows, room sizes and layouts are subject to change per elevation or flex option. Ask your Community Sales Team for details. All information contained in this brochure is qualified in its entirety by the Seller's Information Statement, which is incorporated herein by this reference. 3/08

Residence Five (Preliminary)

4 Bedrooms, 2½ Baths, 2-Car Garage

Optional Loft

Approximately 1,719 Square Feet



*Sweeping porch and welcoming entry
spark curiosity...*

All renderings are artist's conception.



SummerHill Homes reserves the right to alter floorplans, specifications, features, prices, and other information described in this brochure without notice or obligation. All room dimensions and home sizes are approximate and may vary depending upon elevations. Windows, room sizes and layouts are subject to change per elevation or flex option. Ask your Community Sales Team for details. All information contained in this brochure is qualified in its entirety by the Seller's Information Statement, which is incorporated herein by this reference. 3/08

Residence Six (Preliminary)

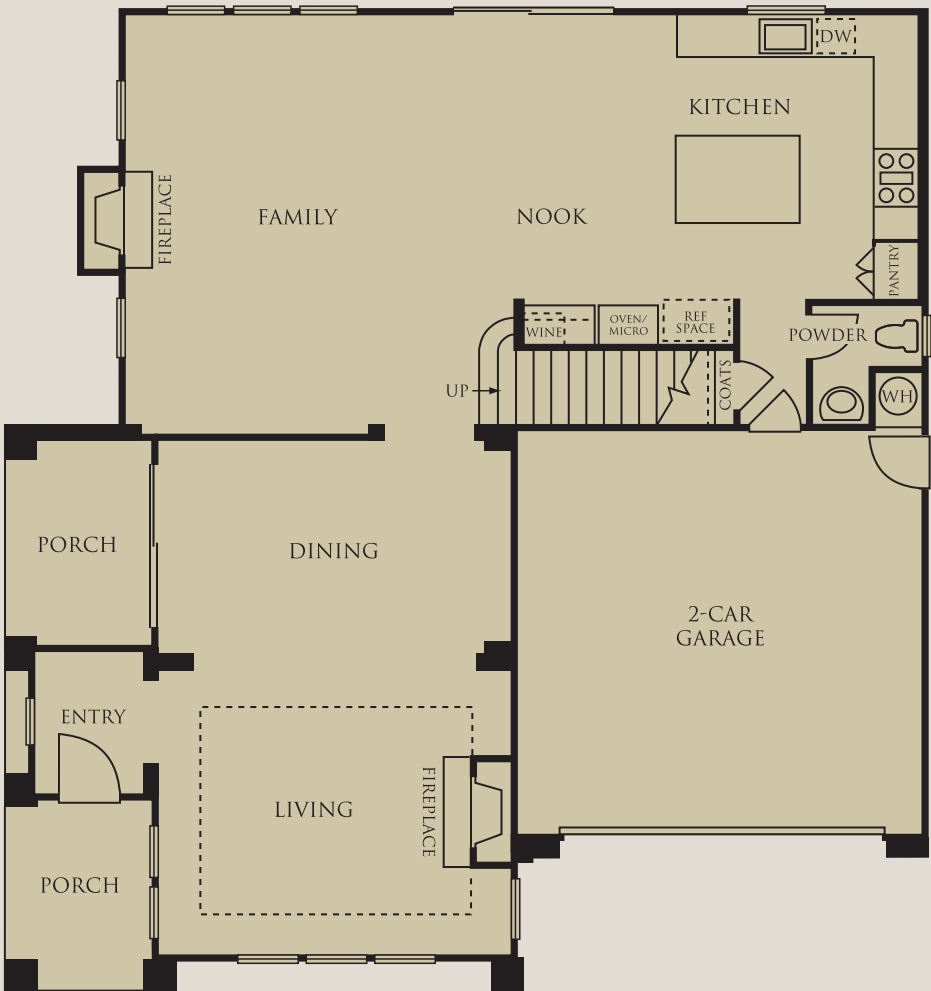
2008 Sunset Idea House

4 Bedrooms, 3½ Baths, Tech Area, 2-Car Garage

Approximately 2,998 Square Feet



Residence 6D



First Floor

All renderings are artist's conception.



SummerHill Homes reserves the right to alter floorplans, specifications, features, prices, and other information described in this brochure without notice or obligation. All room dimensions and home sizes are approximate and may vary depending upon elevations. Windows, room sizes and layouts are subject to change per elevation or flex option. Ask your Community Sales Team for details. All information contained in this brochure is qualified in its entirety by the Seller's Information Statement, which is incorporated herein by this reference. 3/08

Residence Six (Preliminary)

2008 Sunset Idea House

4 Bedrooms, 3½ Baths, Tech Area, 2-Car Garage

Approximately 2,998 Square Feet



Second Floor



*Ideas fill this home to cater to
your every pleasure and pastime...*

All renderings are artist's conception.



SummerHill Homes reserves the right to alter floorplans, specifications, features, prices, and other information described in this brochure without notice or obligation. All room dimensions and home sizes are approximate and may vary depending upon elevations. Windows, room sizes and layouts are subject to change per elevation or flex option. Ask your Community Sales Team for details. All information contained in this brochure is qualified in its entirety by the Seller's Information Statement, which is incorporated herein by this reference. 3/08

Features

Distinctively Different Exteriors

Heritage trees are found throughout this elegant community with a community park at the center

Handsome 50-year high profile composition shingle roof

Beautiful and durable 3-coat stucco or Hardiplank® lap, shingle, or board-and-batten siding exteriors with wood and brick detailing, per elevation

Stunning eight-foot Therma-Tru® fiberglass entry door with Baldwin® oil rubbed bronze handle for an elegant first impression

Andersen® clad wood cased windows and sliding doors

5¼-inch base throughout whole house

Two-car garage with architectural style roll-up door

Beautiful front yard landscaping with automatic sprinkler system

Inspiring Interiors

Hand-set, 18-inch square ceramic tile flooring in entry

Stain-resistant carpet

Two-color paint for richness and character

Inviting, glass-enclosed gas appliance fireplace with electric ignition

Lighting package with Decora® light switches

Raised two-panel interior doors with Baldwin® door hardware

Gourmet Kitchens

Beautiful Wolf® stainless steel cooking appliances

Designer-selected granite slab countertops with full backsplash behind cooktop

Kohler® stainless steel dual compartment kitchen sink with Kohler® gourmet brushed nickel pull-out spray faucet

Maple raised panel cabinetry in rich caramel finish with 48-inch upper cabinets

Spacious pantry, per residence

Hand-set 18-inch square ceramic tile flooring in kitchen and nook

Decorative pendant lights over island

Private Master Suites

Oval Kohler® soaking tub with marble tile surround, per residence

Separate oversized shower with seat features marble tile surround and clear glass shower enclosure with brushed nickel finish, per residence

Maple raised panel cabinetry in rich caramel finish

12-inch square marble tile vanity countertop with backsplash

Dual Kohler® china sinks with Kohler® faucets in brushed nickel finish

Hand-set 18-inch square ceramic tile flooring

Large walk-in closets with mirrored door

Secondary Bathrooms

Tub with 6-inch square ceramic tile surround

Maple raised panel cabinetry in rich caramel finish with ceramic tile vanity top, top-set china sinks, and Kohler® brushed nickel faucets

Hand-set 18-inch square ceramic tile flooring

Kohler® pedestal sink with brushed nickel faucet and ceramic tile flooring in powder room, per residence



Features

Energy Efficient & Technology Features

Designed to be GreenPoint Rated

Homes meet ENERGY STAR® and ComfortWise® program guidelines increasing energy efficiency of the home

Dual-paned Andersen® clad wood windows and sliding doors with Low-E glass

Dual-zone, high-efficiency forced air gas furnace with electronic ignition and energy efficient electronic set-back thermostat

Dual-zone air conditioning

Energy-saving 50-gallon gas water heater with recirculation pump to all fixtures

Smoke detectors wired throughout the home for safety

Gas and electric dryer hook-ups

Pre-wire for security system

Pre-wire for ceiling fans in family room and master bedroom

Structured wiring throughout home for high-speed networking including dual Category 5 cable with universal outlets in media niche, all bedrooms, library, loft, office, and tech area, per residence

Custom Choices™ Options Program

Our Design Studio Team may have pre-selected options and upgrades for certain homes at Lane Woods. Contact the Community Sales and Design Studio Team about available optional features.

Decorative tile, granite tile, marble tile, granite slab, and marble slab for countertops and surrounds

Choice of wood, finishes and cabinet door styles

Glass upper cabinets in kitchen in select pre-determined locations, per residence

Additional Wolf® appliance available, including undercounter wine chiller, warming drawer, professional range and additional oven, per residence

Sub-Zero® refrigerators

Additional kitchen sink options

Plumbing fixture finish in kitchen and baths

Instant hot water dispenser or combo instant hot and water filter in kitchen sink

Solid core, raised two-panel interior doors

Oil rubbed bronze finish on interior door hardware

Designer-selected interior paint options

Carpet, pad, tile and hardwood flooring upgrades

All stain-grade handrails, balusters and newels to complement cabinets

Choice of fireplace surrounds

Crown molding

Jetted tub in master bath

Decorative mirrors in master bath and powder room

Clear glass tub enclosures in secondary baths

Mirrored closet doors in secondary bedrooms

Additional recessed lighting locations, per residence

Light fixture selections

Pre-wire for flat panel television

Speakers and surround sound in select locations

Additional data wiring, multicom ports and optional phone jacks

Full security system

Central vacuum system

Paint and textured garage interior



Lane Woods

BY SUMMERHILL HOMES

805 Paulson Circle, Menlo Park, CA 94025

P (650) 566-9882 • F (650) 566-9883 • LaneWoodsSales@shhomes.com

MENLO PARK RESTAURANTS

1. Cafe Borrone
2. Palermo
3. BBC
4. Stacks'
5. Left Bank
6. Bistro Vida
7. Starbucks
8. Le Boulanger
9. Ann's Coffee Shop
10. Carpaccio
11. Silan
12. Baffo Dal European Cuisine
13. Marché
14. Peet's Coffee

PALO ALTO RESTAURANTS

15. Tamarine
16. Zibibbo
17. Pluto's
18. The Cheesecake Factory
19. La Strada
20. Satura Cakes
21. Three Seasons
22. Evvia Estiatorio
23. Patxi's Chicago Pizza
24. Nola
25. Pizza My Heart
26. Palo Alto Creamery
27. Mantra
28. Gordon Biersch
29. Buca di Beppo
30. Empire Tap Room
31. St. Michael's Alley



SUMMERHILL HOMESSM

COMMUNITIES OF DISTINCTION

www.SummerHillHomes.com



SummerHill Homes: Communities of Distinction.

SummerHill Homes has created a tradition of well-planned neighborhoods with dramatic architectural styling built in superior settings throughout the San Francisco Bay Area. SummerHill Homes' new communities are distinguished by their rich character and exceptional attention to detail, lending to the enduring quality of all its homes.

For over 30 years, SummerHill Homes' communities have earned homeowner satisfaction and significant industry recognition, including several Best in American Living Awards from the National Association of Home Builders, numerous Gold Nugget Awards at the Pacific Coast Builders Conference, and several features in national magazines including *Builder*, *Professional Builder*, and *Sunset* magazine.

