

A large, faint, stylized cross graphic is centered on the page. The cross is composed of four rectangular arms. The top and bottom arms are a medium brown color, while the left and right arms are a light sage green color. The cross is centered behind the main title.

RAVENNA

Ideal ...

A standard of perfection or excellence.

*The ideal lifestyle is one that offers
affordability, convenience, and comfort.*

*One where you can afford an elegant yet timeless
home and still enjoy life. One where you can
work a full day and get home with time to spare.*

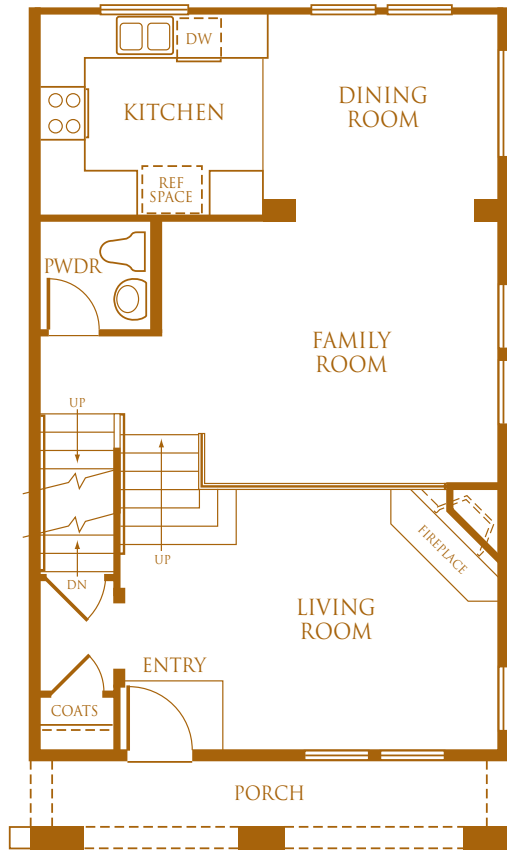
*One where your home offers a respite from
the hectic pace of the day. All this and more
can be yours at Ravenna. Here the homes are
affordable, convenient to work or play in*

*Willow Glen or downtown San Jose, and highly
amenitized with today's most sought-after*

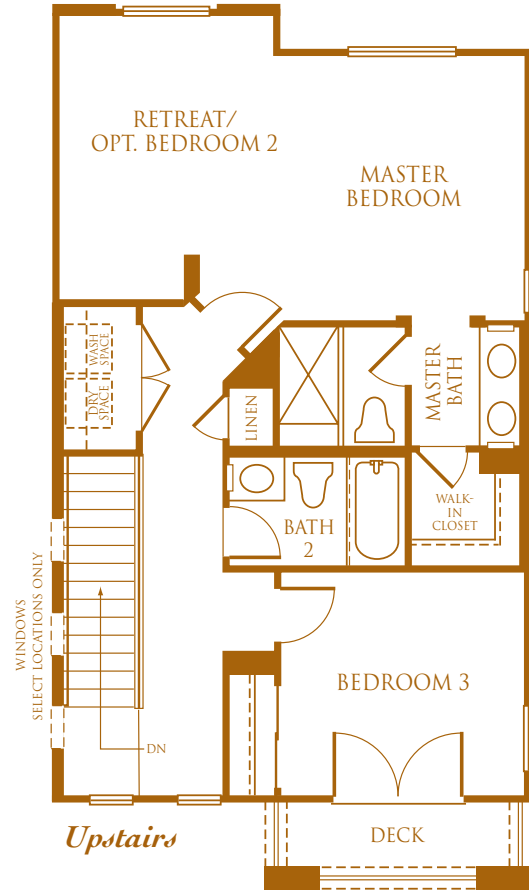
*features such as high ceilings, gourmet kitchens,
and luxurious master suites. Come home
to your ideal home... Ravenna.*

RAVENNA

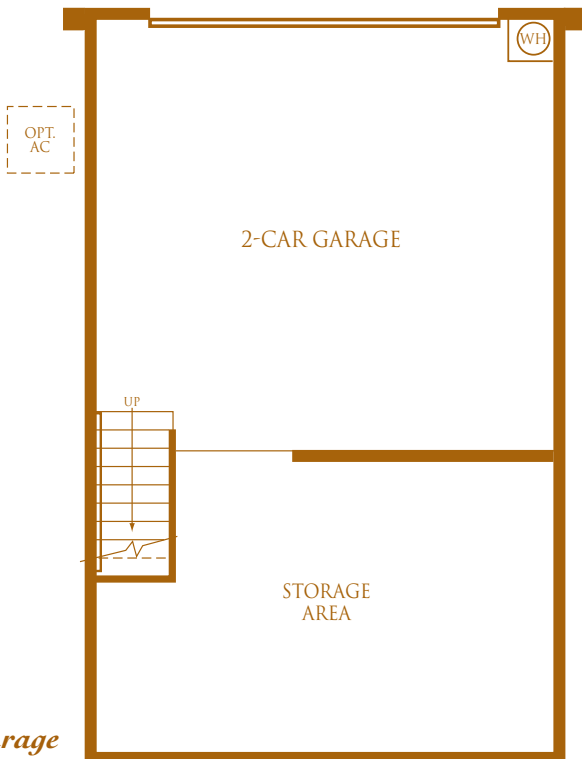
THE CAPRI



Downstairs



Upstairs



Garage



Optional bedroom 2 at retreat

*Approx. 1,489 square feet • 2 bedrooms plus retreat
2½ baths • Formal living room • Dining room
Family room • Optional bedroom
2-car garage with extra storage area*



The Capri – 1a



Artist's conception

Casual living spaces.

Formal entertaining places.

Happy, smiling faces.

*It's all here under the roof
of this special home that effortlessly
combines beautiful form with
superb functionality.*

The Capri – 1b



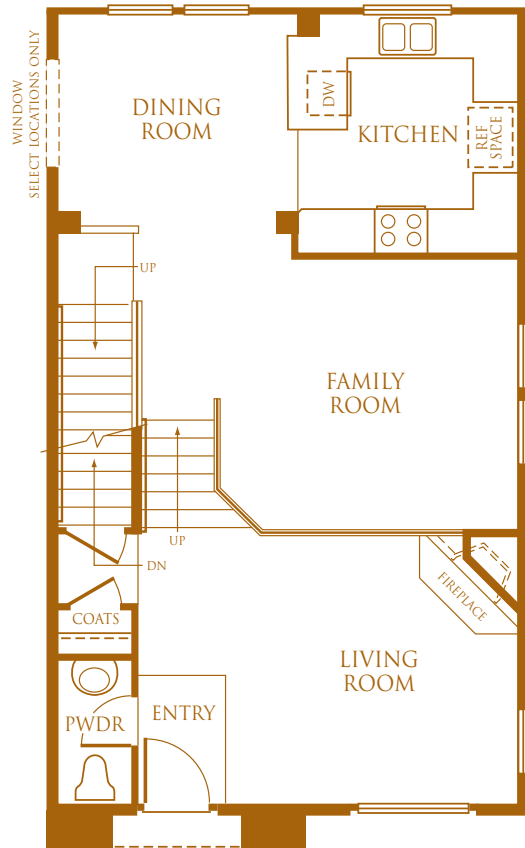
Artist's conception

The Capri – 1c

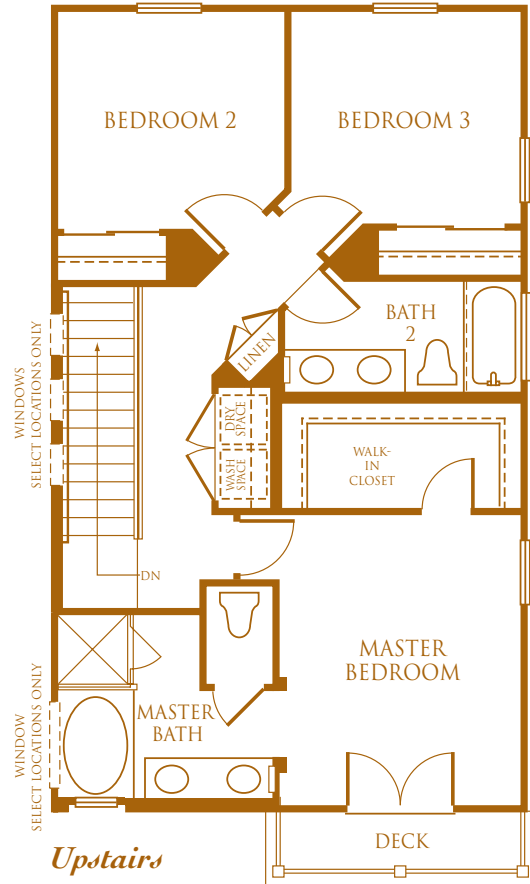


Artist's conception

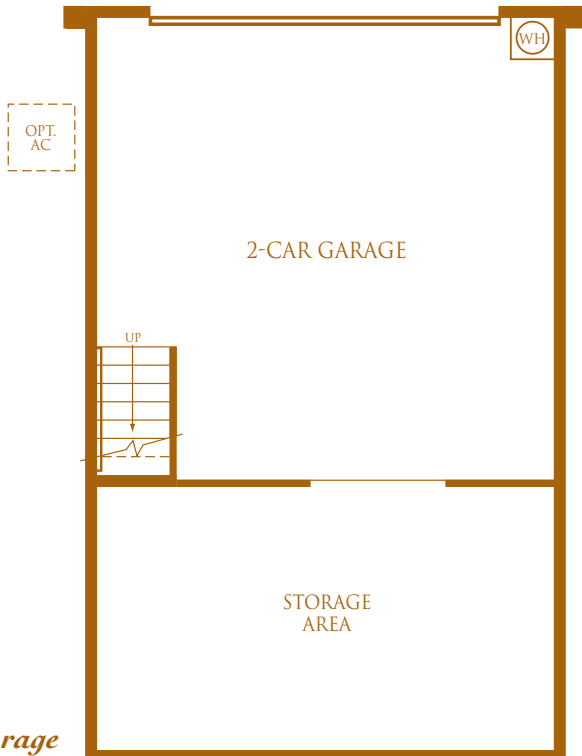
THE VERONA



Downstairs



Upstairs



Garage

Approximately 1,589 square feet

3 bedrooms

2½ baths

Formal living room

Separate dining room

Family room

2-car garage with extra storage area



The Verona – 2a



Artist's conception

*With an exceptional look,
this exquisite residence
beautifully balances
graceful living space with
relaxing private space.
“Welcome Home”
is the sentiment that is sure
to come to mind.*

The Verona – 2b



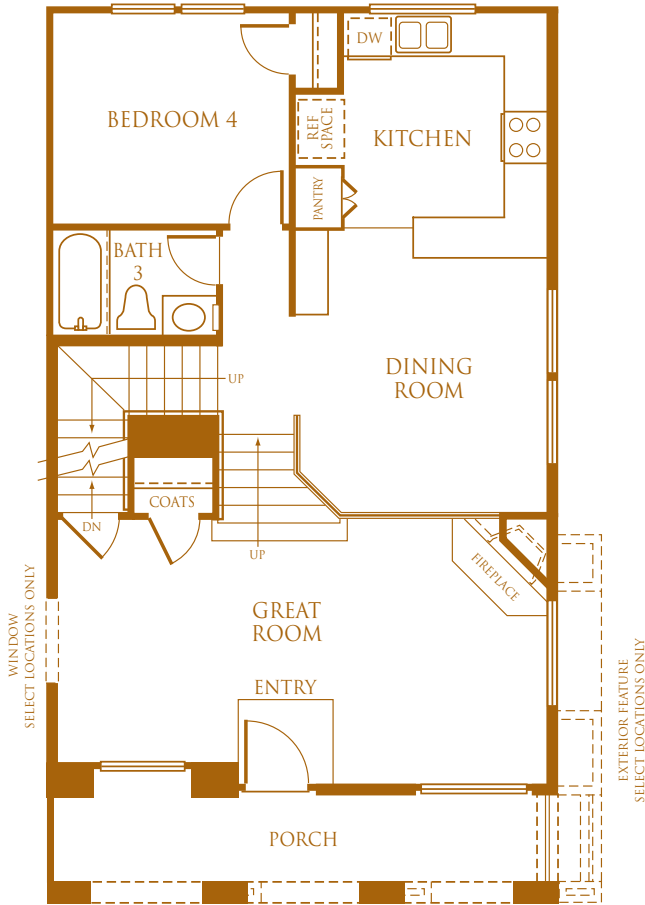
Artist's conception

The Verona – 2c

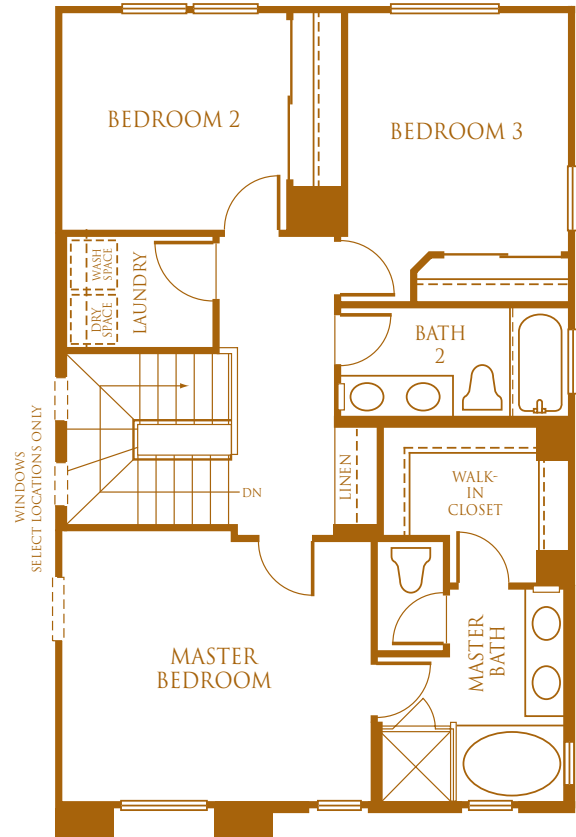


Artist's conception

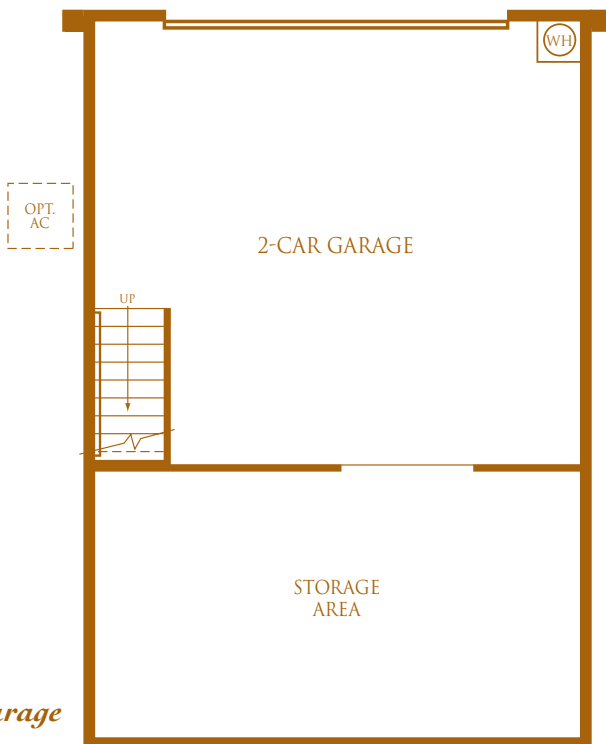
THE TOSCANA



Downstairs



Upstairs



Garage

Approximately 1,712 square feet

4 bedrooms

3 baths

Spacious great room

Private dining room

2-car garage with extra storage area



The Toscana – 3a



Artist's conception

*This home is sure to be
the entertainer's dream.*

*The great room is perfect for both
watching movies and playing games,
while the downstairs bedroom
is ideal for guests.*

The Toscana – 3b



Artist's conception

The Toscana – 3c



Artist's conception

DISTINCTIVE EXTERIORS

At SummerHill Homes, we believe a great home begins with timeless design. We have embellished the homes at Ravenna with tasteful details that will provide years of enjoyment — and a feeling of pride every time you come home.

- *Timeless architectural styling in the award-winning SummerHill Homes tradition*
- *Handsome, low-maintenance shake, slate, or “S” tile concrete tile roof providing long-lasting beauty and protection, per elevation*
- *Durable three-coat stucco exteriors, painted with designer-selected color palette. So sophisticated!*
- *Eight-foot, IWP® Aurora raised-panel entry door with oil-rubbed bronze hardware for an elegant first impression*

FEATURES

- *Two-car garage with insulated, steel roll-up sectional doors, automatic opener, and two remotes*
- *Dual-glazed, spectrally selective glass vinyl windows for outstanding energy savings*
- *Cozy front patios with broom-finished concrete — perfect for relaxing at the end of the day!*

ELEGANT INTERIORS

High ceilings make interior spaces inviting. Rooms are arranged to keep the family close — yet also provide plenty of privacy.

- *Three exciting and functional floorplans that include formal and casual living spaces*
- *Hand-set, 12" x 12" ceramic tile flooring in entry for extra durability*

- *Luxurious, designer-selected carpet and 3/8" pad*
- *Convenient recessed lighting throughout home for abundant light*
- *Stained maple handrail with white painted balusters*
- *Inviting, easy-care gas appliance fireplace with glass door enclosure and pre-cast surround*
- *Six-panel “Colonist” interior doors*
- *Polished chrome door handles*
- *Graceful, rounded wall corners throughout for a look of elegance and craftsmanship*
- *Lightly textured wall finish with designer-selected paint for richness and character*

GOURMET KITCHENS

The kitchen is the “heart of the home,” a place for the family to gather and share the events of the day.

- *Elegant, recessed panel maple cabinetry throughout with white interiors, adjustable upper shelves, concealed hinges, and easy-glide drawers*
- *Hand-set countertops of white ceramic tile with 6" tile backsplash*
- *Full tile backsplash behind range*
- *White enamel, cast iron, dual-compartment kitchen sink with gourmet pull-out faucet*
- *Included appliances available in white or black:*
 - *30" self-cleaning, slide-in gas range*
 - *Built-in vented micro-hood over range*
 - *Deluxe dishwasher*
- *½ h.p. garbage disposal*
- *Refrigerator space plumbed for ice maker for easy installation*
- *Durable, no-wax vinyl flooring*
- *Under-cabinet task lighting puts light where you need it*



PRIVATE MASTER SUITES

Welcome to your private domain. These master suites surround you with comfort — a welcome respite from your busy day.

- Oval tub with cultured marble surround for easy care, per residence
- Separate shower with clear glass enclosure and cultured marble surround, per residence
- Cultured marble vanity with dual china sinks
- Stylish, polished chrome bathroom fixtures
- Recessed panel maple cabinetry
- Beveled mirror in master bath with decorative light bar over sinks
- Convenient recessed medicine cabinet, per residence
- Durable, no-wax vinyl flooring in master bath water closet
- Walk-in closet with mirrored door

OTHER FINE FEATURES

We have included an array of “hidden” features for your convenience and comfort.

- Spacious tub and shower with cultured marble surround in secondary baths
- Cultured marble vanity top with top-set china sinks and polished chrome faucets in secondary baths
- Pedestal sink with beveled mirror above in powder bath, per residence
- Convenient interior laundry area with maple upper cabinets, per residence
- Durable, no-wax vinyl flooring in powder, secondary baths, and laundry areas
- Gas and electric dryer hook-ups
- Category 5 wiring with home-runs in all bedrooms and family room, per residence
- Cable television wiring in all bedrooms and family room, per residence

ENERGY-SAVING FEATURES

Although not readily apparent to the eye, these features will make your home more comfortable by reducing noise, controlling temperatures, and conserving household resources.

- Homes meet ComfortWiseSM ENERGY STAR[®] program guidelines, increasing energy efficiency of the home

- High-efficiency, forced air, gas furnace with electronic ignition and energy-efficient electronic set-back thermostat for maximum efficiency
- Energy-saving 50 gallon hot water heater with recirculation pump to all fixtures
- Smoke detectors wired throughout the home for safety and peace of mind

CUSTOMIZING OPTIONS AND UPGRADES

We are proud to offer an extensive Custom Choices Options Program to personalize your home to fit your individual lifestyle.

- Vinyl, carpet, tile, marble, and hardwood flooring
- Ceramic tile and granite tile countertops in kitchen
- Cherry raised panel cabinets with light cherry or rich brown stain
- Gourmet kitchen appliances
- Refrigerator and washer and dryer
- Cherry stain-grade handrail to match upgrade cabinets
- Remote control for fireplace
- Master bath countertops, tub, and shower surrounds
- Jetted tub in master bath
- Tub enclosure for secondary bath
- Mirrored wardrobe closet doors in secondary bedrooms
- Additional electrical outlets and telephone jacks with Category 5 home-runs
- Structured wiring
- Additional data home wiring multicom ports
- Additional lighting fixtures
- Entertainment and security systems
- Crown molding in select areas
- Optional second bedroom, Residence 1 only
- Keyless entry at garage
- Central air conditioning

...And, much more. Contact the Ravenna Community Sales Manager for details of which optional features are available. Certain homes at Ravenna may have been beautifully pre-selected with many options and upgrades.



SummerHill Homes has created a tradition of well-planned neighborhoods with dramatic architectural styling built in superior settings throughout the San Francisco Bay Area.

SummerHill's new communities are distinguished by their rich character and exceptional attention to detail, lending to the enduring quality of all its homes.

For over 25 years, SummerHill Homes' new communities

have earned homeowner satisfaction

and significant industry recognition,

including several Best in American

Living Awards from the National Association of Home

Builders, numerous Gold Nugget Awards at the Pacific

Coast Builders Conference, and several features in national

magazines including Builder, Professional Builder,

and Better Homes and Gardens.

SUMMERHILL HOMESSM
COMMUNITIES OF DISTINCTION

812 Foxworthy Avenue

San Jose, CA 95125

408.264.5569

Fax 408.264.5571

