

## A close-up, warm-toned photograph of a woman with dark hair, wearing a blue long-sleeved shirt. She is holding a white ceramic coffee cup with both hands, looking down at it with a slight smile. The cup is filled with dark coffee. She is seated at a light-colored wooden table. In the foreground, to the left, lies an open book with text on its pages. To the right of the book is a white ceramic saucer. The background is softly blurred, showing more of the wooden table and a hint of a warm, indoor setting.

Redwood Gate's stunning exteriors include designer stucco, lap siding, board-and-batten, high profile composition shingle roofing, and clad wood windows. While the Redwood Gate neighborhood is new, the classic design offers timeless beauty.

## A young man and woman are looking at shoes in a store window display. The woman is pointing at a pair of white sneakers. The man is smiling and looking at the shoes. The display is filled with various styles of shoes, including high heels and sneakers.

A young girl with dark hair, wearing a bright yellow raincoat, is captured in a dynamic pose. She is holding a long, dark wooden sword with both hands, swinging it upwards. Her head is tilted back, and her mouth is open in a joyful expression. The background is a blurred green field, suggesting an outdoor setting. The image is oriented vertically, matching the portrait orientation of the page.

Redwood Gate beckons you with a tree-lined entrance and a **stunning 1/2-acre park**. The two- and three-story homes are surrounded by private neighborhood streets, offer pedestrian-oriented design and wide sidewalks surrounded by mature trees throughout your new neighborhood.

A young girl with dark hair, wearing a bright yellow raincoat, is captured in a dynamic pose. She is holding a long, dark wooden sword with both hands, swinging it upwards. Her head is tilted back, and her mouth is open in a joyful expression. The background is a blurred green field, suggesting an outdoor setting. The image is oriented vertically, matching the portrait orientation of the page.

This image shows a single sheet of white paper with horizontal ruling lines. The lines are evenly spaced and run across the width of the page. There are no margins, text, or other markings on the paper.



RedwoodGateSales@shhomes.com  
RedwoodGatePaloAlto.com



# REDWOOD GATE



BY SUMMERHILL HOMES

SummerHill Homes reserves the right to alter floorplans, specifications, features, prices, and other information described in this brochure without notice or obligation. All room dimensions and home sizes are approximate and may vary depending upon elevation. Window sizes, room sizes, floorplans, and patio/deck layouts are subject to change per plan location. Ask the Community Sales Team for details. All information contained in this brochure is qualified in its entirety by the Seller's Information Statement, which is incorporated herein by this reference. 2/10





## Redwood Gate Fine Palo Alto Living

- Palo Alto schools
- Up to approximately 2,424 square feet
- Up to 5 bedrooms
- Prestigious Palo Alto address



## Redwood Gate Features

- Palo Alto offers highly-regarded schools, great commutes, and an excellent lifestyle
- Beautifully landscaped common areas including garden walk, community park with a children's play area, barbecue area, and on-site guest parking
- Volume ceilings
- Stain-resistant carpet for impressive style and durability
- Air conditioning for added comfort
- Andersen® windows and French doors

### Gourmet Kitchens

- Maple shaker panel cabinetry in natural finish
- Stainless steel kitchen sink with Kohler® gourmet, polished chrome pull-out spray faucet


- Granite slab countertops with full backsplash behind cooktop
- Beautiful GE® Monogram and Profile stainless steel appliances

### Private Master Suites

- Oversized soaking tub, per residence
- Dual porcelain sinks with Kohler® faucets in polished chrome finish
- Maple shaker panel cabinetry in natural finish and Crema Marfil slab vanity countertop with backsplash
- Hand-set 12-inch square ceramic flooring

*Personalize your home with optional features at the SummerHill Design Studio*



|   |   |   |   |
|---|---|---|---|
|  |  |  |  |
| <b>Residence 1</b><br>Approx. 1,769 - 1,775 sq. ft.                                   | <b>Residence 2</b><br>Approx. 1,838 - 1,859 sq. ft.                                   | <b>Residence 3</b><br>Approx. 1,935 - 1,947 sq. ft.                                   | <b>Residence 4</b><br>Approx. 2,134 sq. ft.   |
|  |  |  |   |
| <b>Residence 5</b><br>Approx. 2,408 - 2,424 sq. ft.                                   | <b>Residence 6</b><br>Approx. 2,330 sq. ft.   | <b>Residence 7</b><br>Approx. 2,373 - 2,380 sq. ft.                                   |   |

Artist's Conception.  
Landscaping shown is for illustration purposes only and may not be an exact representation of actual landscaping.



ATTIC ACCESS

BEDROOM 2  
OPT. RETREAT

MASTER BEDROOM

OPTIONAL LINEN

BATH 2

DN

OPEN TO BELOW

WALK IN CLOSET

MASTER BATH

BEDROOM 3

[illegible]

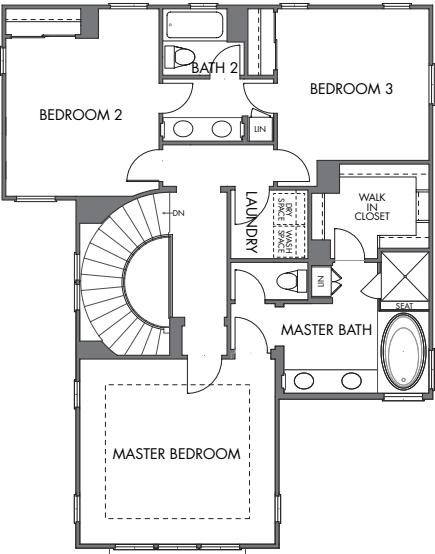
RESIDENCE 1A  
ENHANCED PORCH

PORCH

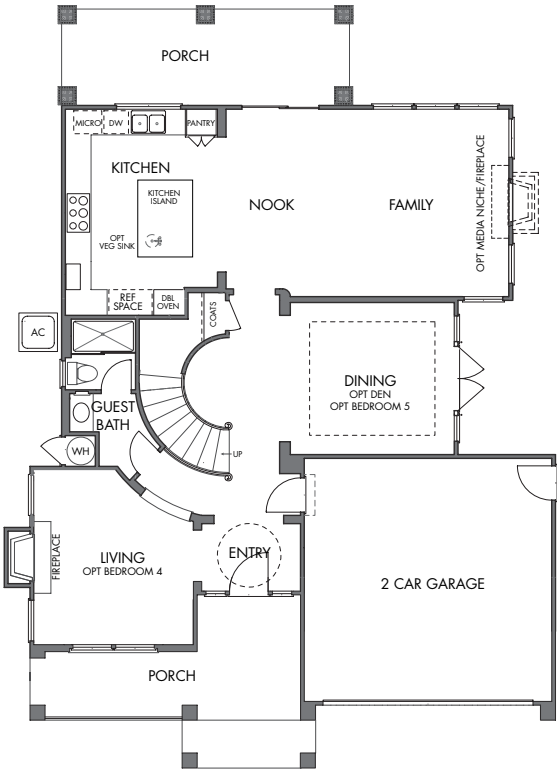
Floor plan for the second bedroom, labeled "AT BEDROOM 2". The plan includes an "OPTIONAL DEN/OFFICE" area, an "OPTIONAL RETREAT" area, "BATH 2" with a bathtub, toilet, and sink, and two "OPT. LINEN" closets. A staircase labeled "DN" (down) is also shown.

APPROX. 2,238 SQ. FT., 3-4 BEDROOMS AND 2½-3½ BATHS

SECOND FLOOR



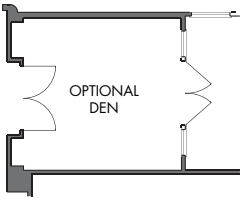
FIRST FLOOR



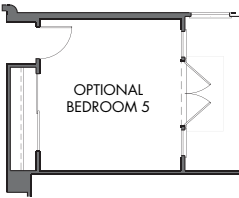
OPTIONAL BEDROOM 4  
AT LIVING ROOM



OPTIONAL DEN  
AT DINING ROOM



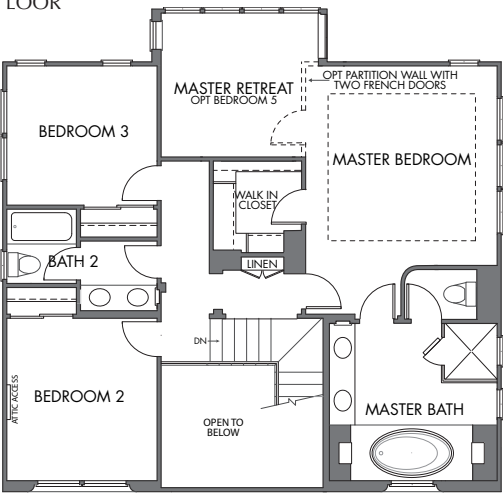
OPTIONAL BEDROOM 5  
AT DINING ROOM



RESIDENCE 2

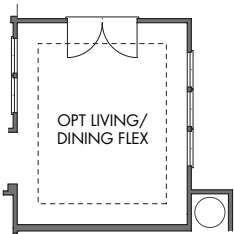
APPROX. 2,246 SQ. FT., 3-5 BEDROOMS AND 3 BATHS

SECOND FLOOR

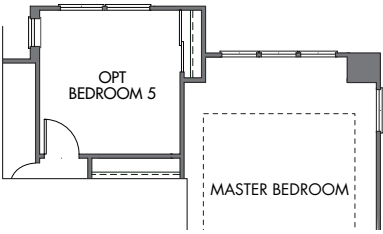


FIRST FLOOR

OPTIONAL LIVING/DINING FLEX  
AT BEDROOM 4

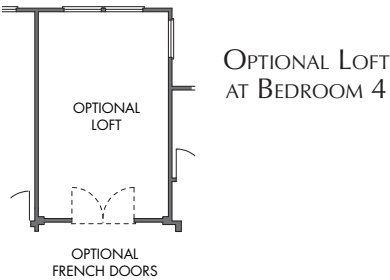
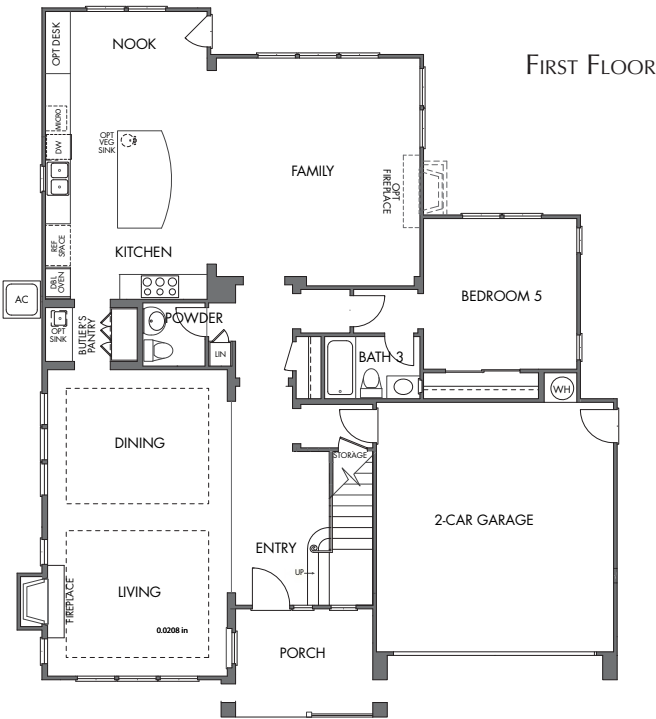
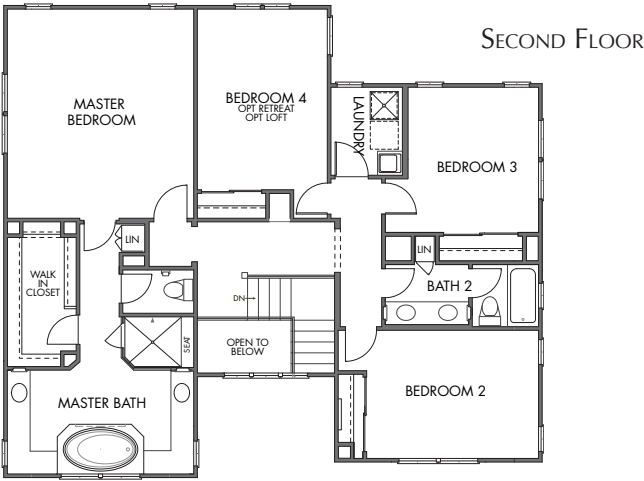


OPTIONAL BEDROOM 5  
AT MASTER RETREAT



RESIDENCE 3

APPROX. 2,281-2,298 SQ. FT., 3-5 BEDROOMS AND 2½-3½ BATHS



# RESIDENCE 4

APPROX. 3,055 SQ. FT., 4-5 BEDROOMS AND 3½ BATHS

[illegible][illegible]

OPTIONAL  
RETREAT

APPROX. 3,358 SQ. FT., 4-5 BEDROOMS AND 3½ BATHS

Site plan and maps are artist's conceptions and not to scale. All features, schools and information are subject to change without notice or obligation. SummerHill Homes Brokerage Inc. DRE# 01301389 4/10