

Cottages One

3 Bedrooms • 2½ Baths • 2-Car Garage • Approximately 1,922 Square Feet

Rosewood
Cottages
BY SUMMERHILL HOMES



Cottages 1A



Cottages 1B



Cottages 1C

All renderings are artist's conception.



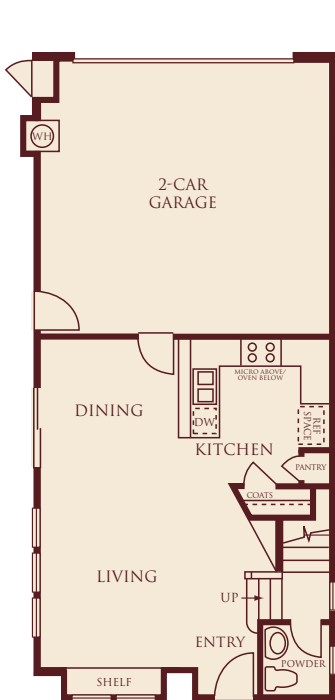
SummerHill Homes reserves the right to alter floorplans, specifications, features, prices, and other information described in this brochure without notice or obligation. All room dimensions and home sizes are approximate and may vary depending upon elevations. Windows, room sizes and layouts are subject to change per elevation or flex option. Ask your Community Sales Team for details. All information contained in this brochure is qualified in its entirety by the Seller's Information Statement, which is incorporated herein by this reference. 1/09

Cottages One

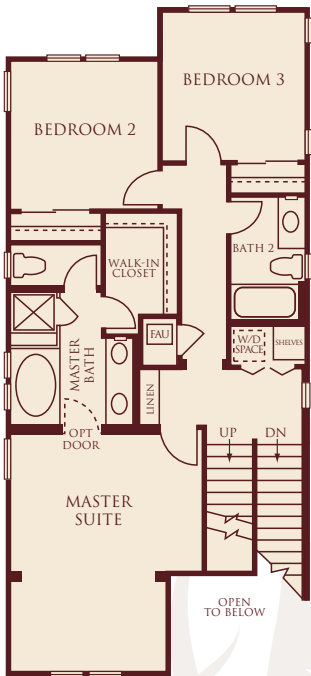
3 Bedrooms • 2½ Baths • 2-Car Garage • Approximately 1,922 Square Feet

Rosewood
Cottages

BY SUMMERHILL HOMES



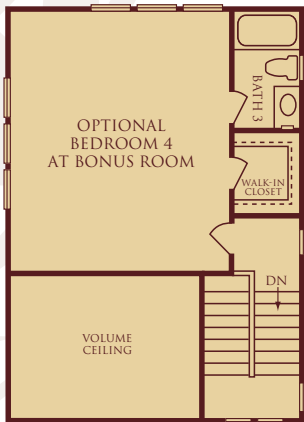
First Floor



Second Floor



Third Floor



Optional Bedroom 4
at Bonus Room



SummerHill Homes reserves the right to alter floorplans, specifications, features, prices, and other information described in this brochure without notice or obligation. All room dimensions and home sizes are approximate and may vary depending upon elevations. Windows, room sizes and layouts are subject to change per elevation or flex option. Ask your Community Sales Team for details. All information contained in this brochure is qualified in its entirety by the Seller's Information Statement, which is incorporated herein by this reference. 1/09

Cottages Two *Preliminary*

3 Bedrooms • 4½ Baths • 2-Car Garage • Approximately 1,918 Square Feet

Rosewood
Cottages
BY SUMMERHILL HOMES



Cottages 2A



Cottages 2B



Cottages 2C

All renderings are artist's conception.

SummerHill Homes reserves the right to alter floorplans, specifications, features, prices, and other information described in this brochure without notice or obligation. All room dimensions and home sizes are approximate and may vary depending upon elevations. Windows, room sizes and layouts are subject to change per elevation or flex option. Ask your Community Sales Team for details. All information contained in this brochure is qualified in its entirety by the Seller's Information Statement, which is incorporated herein by this reference. 1/09



Cottages Two Preliminary

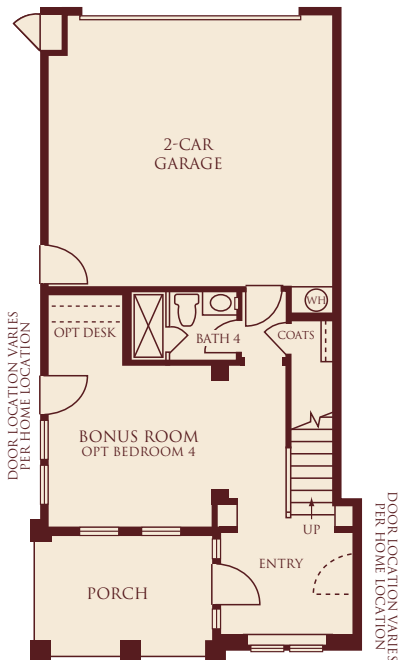
3 Bedrooms • 4½ Baths • 2-Car Garage • Approximately 1,918 Square Feet



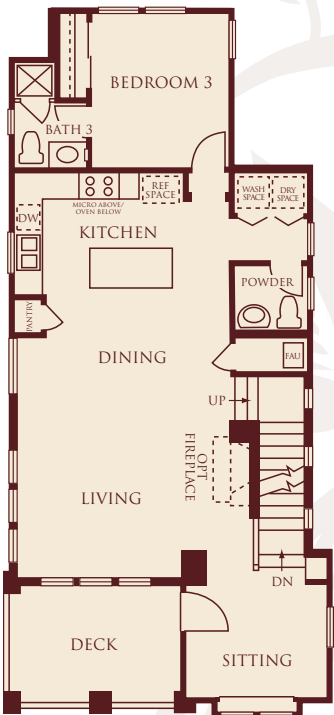
Optional Bedroom 4
at Bonus Room



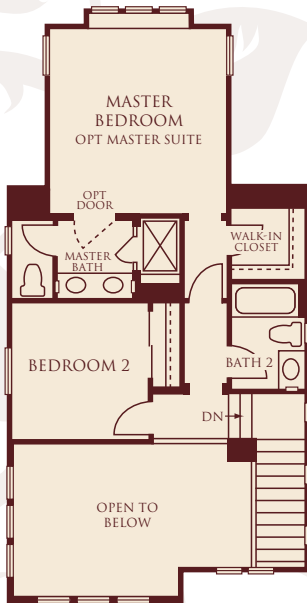
Optional Master Suite
at Master Bedroom



First Floor



Second Floor



Third Floor



Cottages Three *Preliminary*

3 Bedrooms • 3½ Baths • 2-Car Garage • Approximately 2,036 Square Feet

Rosewood
Cottages
BY SUMMERHILL HOMES



Cottages 3A



Cottages 3B



Cottages 3C

All renderings are artist's conception.



SummerHill Homes reserves the right to alter floorplans, specifications, features, prices, and other information described in this brochure without notice or obligation. All room dimensions and home sizes are approximate and may vary depending upon elevations. Windows, room sizes and layouts are subject to change per elevation or flex option. Ask your Community Sales Team for details. All information contained in this brochure is qualified in its entirety by the Seller's Information Statement, which is incorporated herein by this reference. 1/09

Cottages Three *Preliminary*

3 Bedrooms • 3½ Baths • 2-Car Garage • Approximately 2,036 Square Feet

Rosewood
Cottages

BY SUMMERHILL HOMES



* Garage door location varies by lot.

SummerHill Homes reserves the right to alter floorplans, specifications, features, prices, and other information described in this brochure without notice or obligation. All room dimensions and home sizes are approximate and may vary depending upon elevations. Windows, room sizes and layouts are subject to change per elevation or flex option. Ask your Community Sales Team for details. All information contained in this brochure is qualified in its entirety by the Seller's Information Statement, which is incorporated herein by this reference. 1/09



Cottages Four

3 Bedrooms • 3 Baths • 2-Car Garage • Approximately 2,000 Square Feet

Rosewood
Cottages
BY SUMMERHILL HOMES



Cottages 4A (Model)



Cottages 4B



Cottages 4C



Cottages 4D

All renderings are artist's conception.



SummerHill Homes reserves the right to alter floorplans, specifications, features, prices, and other information described in this brochure without notice or obligation. All room dimensions and home sizes are approximate and may vary depending upon elevations. Windows, room sizes and layouts are subject to change per elevation or flex option. Ask your Community Sales Team for details. All information contained in this brochure is qualified in its entirety by the Seller's Information Statement, which is incorporated herein by this reference. 1/09

Cottages Four (Model)

3 Bedrooms • 3 Baths • 2-Car Garage • Approximately 2,000 Square Feet

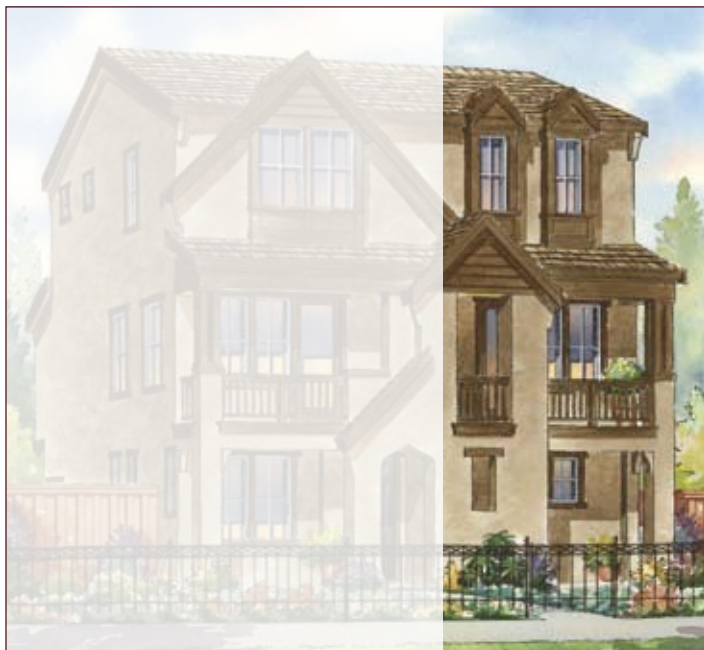


Duet Five

3 Bedrooms • 3 Baths • 2-Car Tandem Garage • Approximately 1,310 Square Feet

Rosewood
Cottages

BY SUMMERHILL HOMES



Duet 5B



Duet 5D

All renderings are artist's conception.



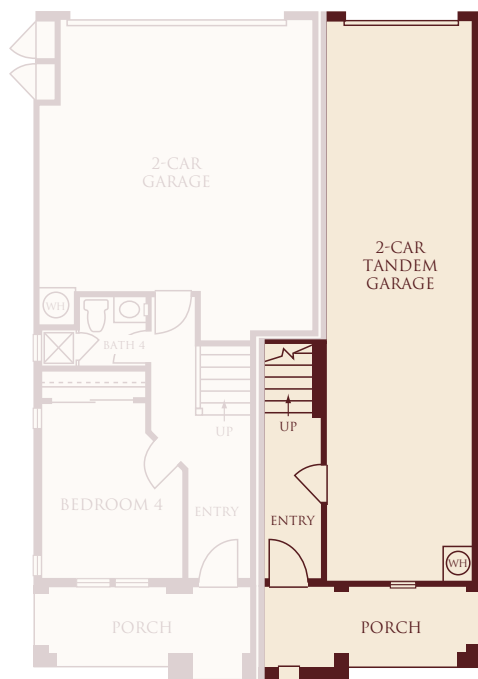
SummerHill Homes reserves the right to alter floorplans, specifications, features, prices, and other information described in this brochure without notice or obligation. All room dimensions and home sizes are approximate and may vary depending upon elevations. Windows, room sizes and layouts are subject to change per elevation or flex option. Ask your Community Sales Team for details. All information contained in this brochure is qualified in its entirety by the Seller's Information Statement, which is incorporated herein by this reference. 1/09

Duet Five

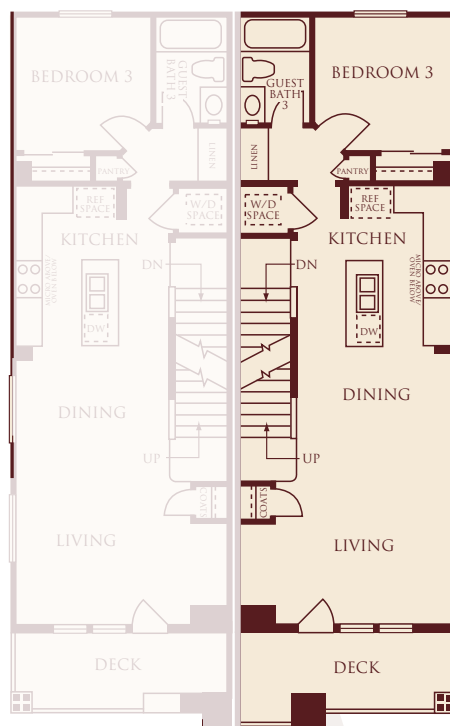
3 Bedrooms • 3 Baths • 2-Car Tandem Garage • Approximately 1,310 Square Feet

Rosewood
Cottages

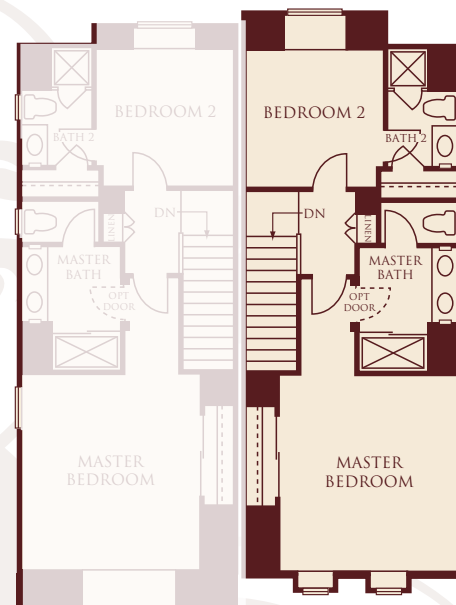
BY SUMMERHILL HOMES



First Floor



Second Floor



Third Floor

Duet Six

4 Bedrooms • 4 Baths • 2-Car Garage • Approximately 1,545 Square Feet

Rosewood
Cottages

BY SUMMERHILL HOMES



Duet 6B



Duet 6D

All renderings are artist's conception.



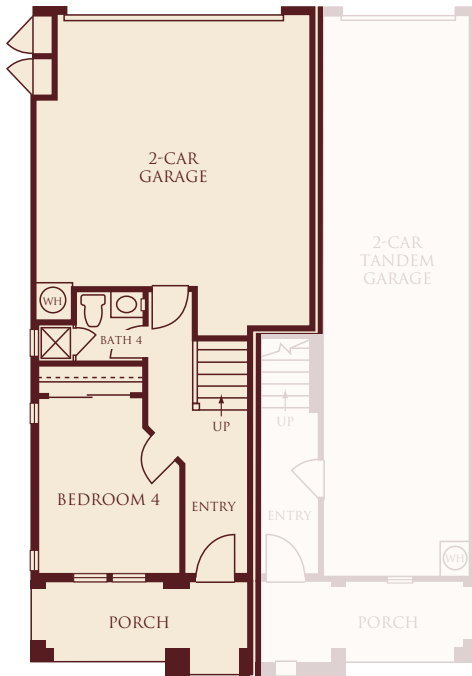
SummerHill Homes reserves the right to alter floorplans, specifications, features, prices, and other information described in this brochure without notice or obligation. All room dimensions and home sizes are approximate and may vary depending upon elevations. Windows, room sizes and layouts are subject to change per elevation or flex option. Ask your Community Sales Team for details. All information contained in this brochure is qualified in its entirety by the Seller's Information Statement, which is incorporated herein by this reference. 1/09

Duet Six

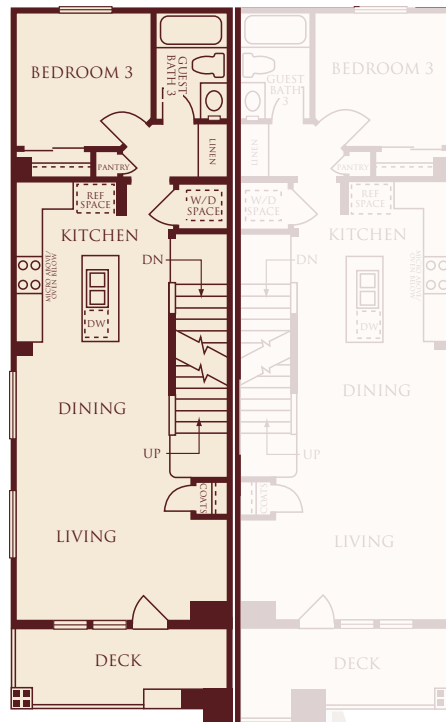
4 Bedrooms • 4 Baths • 2-Car Garage • Approximately 1,545 Square Feet

Rosewood
Cottages

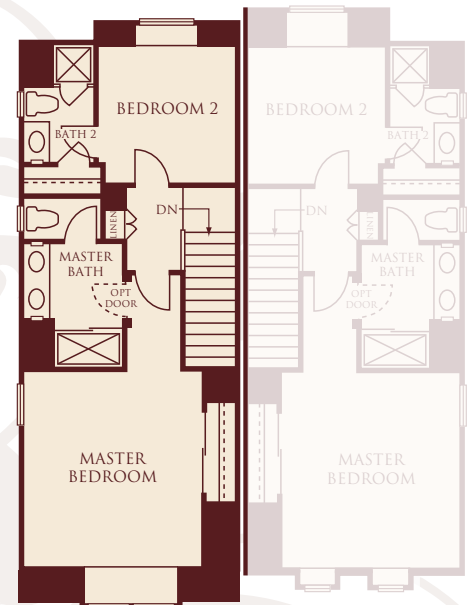
BY SUMMERHILL HOMES



First Floor



Second Floor



Third Floor

Distinctively Different Exteriors

Beautiful and durable three-coat stucco or Hardiplank® lap or shingle siding exteriors with stone, wood, and brick detailing, per elevation

Handsome low maintenance, fire-resistant concrete tile roof, per elevation

Stunning eight-foot Therma-Tru® fiberglass entry door with Venetian bronze handle for an elegant first impression

Two-car or tandem garage with architectural style roll-up sectional door, automatic garage door opener, and two remotes

Beautiful front and side yard landscaping with automatic sprinkler system for a welcoming feel every time you come home

Good neighbor fencing

Inspiring Interiors

Hand-set 12"-square ceramic tile flooring in entry for easy upkeep

Designer-selected, stain-resistant carpet for impressive style and durability

Classically designed stairs with painted handrail, newels, and balusters

Designer-selected lighting package with Decora® light switches to complement your home

Raised two-panel interior doors with polished chrome door knobs

Gourmet Kitchens

Beech recessed panel cabinetry in natural finish offers adjustable upper shelves, pull-out lower shelves next to cooktop, white interior finish, concealed hinges, and easy-glide drawers

Designer-selected 6"-square ceramic tile countertop with full backsplash behind cooktop

Kohler® white dual compartment kitchen sink with Kohler® gourmet polished chrome pull-out spray faucet

Beautiful GE® stainless steel with black appliances include:

- 30" four-burner gas cooktop with hood mounted above
- 30" built-in self-cleaning oven
- Built-in microwave oven
- Deluxe multi-cycle dishwasher

½ h.p. garbage disposal

Spacious pantry, per residence

Hanging fixture with dimmer switch in dining room

Hand-set 12"-square ceramic tile flooring in kitchen and nook

Private Master Suites

Shower with seat features cultured marble surround and clear glass shower enclosure with chrome finish, per residence

Oval Kohler® soaking tub with cultured marble surround, per residence

Beech recessed panel cabinetry in natural finish and designer-selected cultured marble vanity countertop with backsplash

Top-set dual china sinks with Kohler® faucets in an elegant polished chrome finish

Hand-set 12"-square ceramic tile flooring

Compartmentalized water closet

Large walk-in closets, per residence

Secondary Bathrooms

Bathtub with cultured marble surround

Beech recessed panel cabinetry in natural finish with ceramic tile vanity top, top-set china sinks, and Kohler® polished chrome faucets

Hand-set 12"-square ceramic tile flooring

Powder room offers Kohler® pedestal sink with polished chrome faucet, oval beveled-edge mirror, and ceramic tile flooring, per residence

Energy-Efficient and Technology Features

Homes meet ENERGY STAR® and ComfortWise® program guidelines increasing energy efficiency of the home

Dual-pane vinyl windows and sliding doors with Low-E glass for improved energy savings

All exterior doors feature full weather stripping

High-efficiency forced-air gas furnace with electronic ignition and energy-efficient electronic set-back thermostat

Pre-wire for air conditioning

Energy-saving 50-gallon gas water heater with recirculation pump to all fixtures

Smoke detectors wired throughout the home for safety

Gas and electric dryer hook-ups

Pre-wire for ceiling fan in master bedroom

Structured wiring throughout home for high-speed networking including Category 5 cable with universal outlets in media, all bedrooms, and home office, loft or bonus room, per residence

Custom Choices™ Options Program

Certain homes at Rosewood Cottages may have been beautifully pre-selected by our Design Studio Team with options and upgrades. Contact the Community Sales and Design Studio Team about available optional features.

Decorative tile, granite tile, marble tile, granite slab, and marble slab for countertops and surrounds

Choice of wood, finishes, and cabinet door styles

Glass upper cabinets in kitchen in select pre-determined locations, per residence

GE Profile®, GE Monogram®, Wolf®, and Sub-Zero® stainless steel kitchen appliances

Additional kitchen sink options as shown in Design Studio

Optional pendant lights over island in kitchen, per residence

Plumbing fixture finish in kitchen and baths

Instant hot water dispenser or combo instant hot and water filter in kitchen sink

Solid core, raised two-panel interior doors

Choice of brushed nickel or oil-rubbed bronze finish on interior door hardware

Designer-selected interior paint options

Carpet, pad, tile, and hardwood flooring upgrades

All stain-grade handrail, balusters and newels to complement cabinets

Stain-grade handrail and newel posts to complement cabinets with wrought iron balusters

Built-in media cabinet as shown in model, per residence

Crown molding

Jetted tub in master bath

Heavy-duty shower enclosure in master bath

Decorative mirrors in master bath and powder room

Clear glass tub enclosure in secondary baths

Mirrored closet doors in secondary bedrooms

Additional recessed lighting locations, per residence

Light fixture selections

Pre-wire for flat panel television

Speakers and surround sound in select locations

Additional data wiring, multicom ports and optional phone jacks

Air conditioning

Pre-wire for security system

Full security system

Central vacuum system

Paint and texture garage interior

Decorative front porch finishes

