

Gables One *Preliminary*

3 Bedrooms • 3 Baths • 2-Car Garage • Approximately 2,195 Square Feet

Rosewood
Gables

BY SUMMERHILL HOMES



Gables 1A



Gables 1B



Gables 1C

All renderings are artist's conception.

SummerHill Homes reserves the right to alter floorplans, specifications, features, prices, and other information described in this brochure without notice or obligation. All room dimensions and home sizes are approximate and may vary depending upon elevations. Windows, room sizes and layouts are subject to change per elevation or flex option. Ask your Community Sales Team for details. All information contained in this brochure is qualified in its entirety by the Seller's Information Statement, which is incorporated herein by this reference. 1/09



Gables One Preliminary

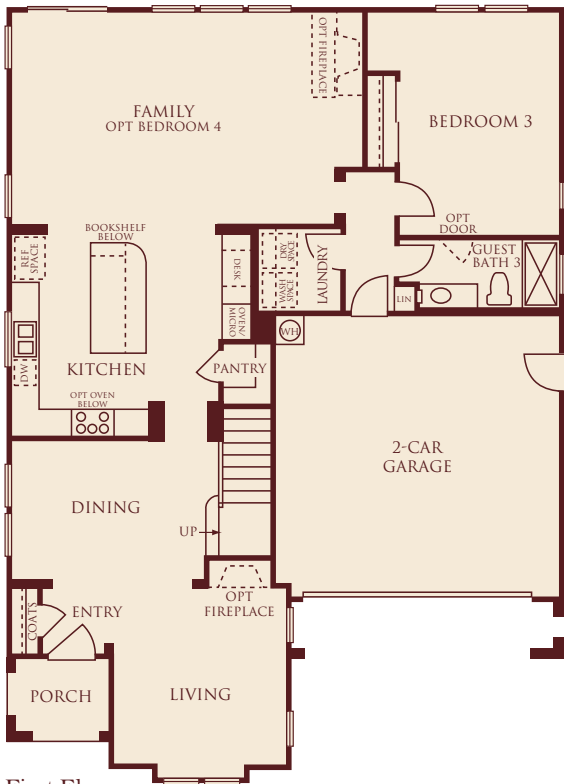
3 Bedrooms • 3 Baths • 2-Car Garage • Approximately 2,195 Square Feet

Rosewood
Gables

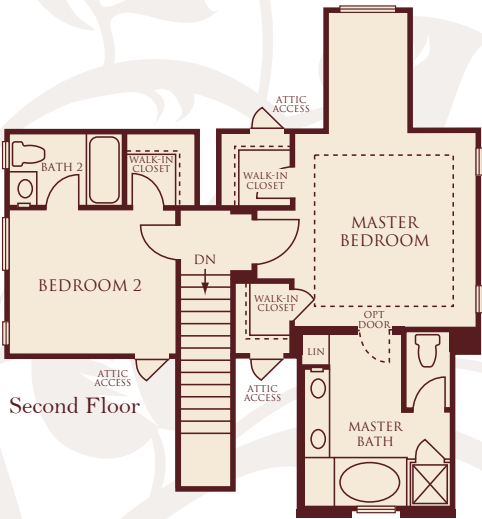
BY SUMMERHILL HOMES



Optional Bedroom 4
at Family



First Floor



Second Floor

Gables Two *Preliminary*

4 Bedrooms • 2½ Baths • 2-Car Garage • Approximately 2,230 Square Feet

Rosewood
Gables

BY SUMMERHILL HOMES



Gables 2B



Gables 2C



Gables 2D

All renderings are artist's conception.



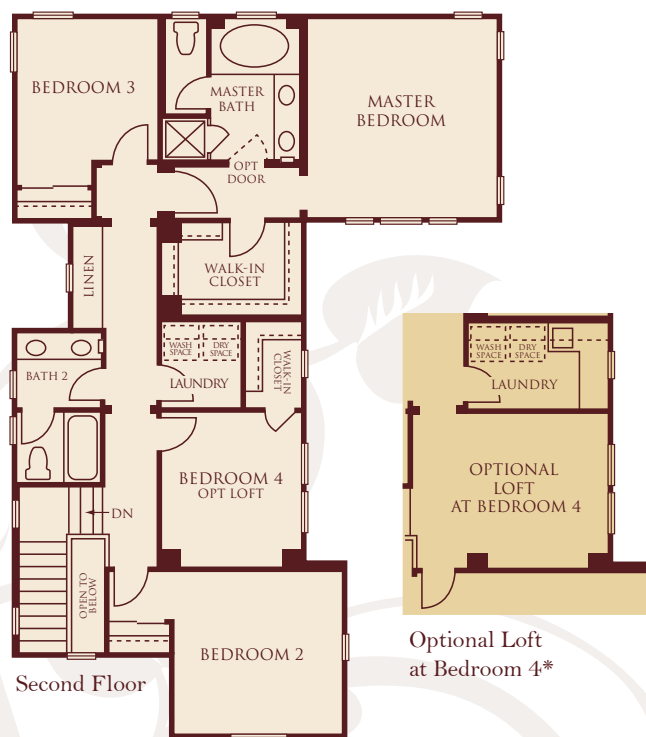
SummerHill Homes reserves the right to alter floorplans, specifications, features, prices, and other information described in this brochure without notice or obligation. All room dimensions and home sizes are approximate and may vary depending upon elevations. Windows, room sizes and layouts are subject to change per elevation or flex option. Ask your Community Sales Team for details. All information contained in this brochure is qualified in its entirety by the Seller's Information Statement, which is incorporated herein by this reference. 1/09

Gables Two Preliminary

4 Bedrooms • 2½ Baths • 2-Car Garage • Approximately 2,230 Square Feet

Rosewood
Gables

BY SUMMERHILL HOMES



* Maximum of 4 bedrooms may be selected.



SummerHill Homes reserves the right to alter floorplans, specifications, features, prices, and other information described in this brochure without notice or obligation. All room dimensions and home sizes are approximate and may vary depending upon elevations. Windows, room sizes and layouts are subject to change per elevation or flex option. Ask your Community Sales Team for details. All information contained in this brochure is qualified in its entirety by the Seller's Information Statement, which is incorporated herein by this reference. 1/09

Gables Three

4 Bedrooms • 3 Baths • 2-Car Garage • Approximately 2,339 to 2,351 Square Feet

Rosewood
Gables

BY SUMMERHILL HOMES



Gables 3A (Model)



Gables 3B



Gables 3C

All renderings are artist's conception.



SummerHill Homes reserves the right to alter floorplans, specifications, features, prices, and other information described in this brochure without notice or obligation. All room dimensions and home sizes are approximate and may vary depending upon elevations. Windows, room sizes and layouts are subject to change per elevation or flex option. Ask your Community Sales Team for details. All information contained in this brochure is qualified in its entirety by the Seller's Information Statement, which is incorporated herein by this reference. 1/09

Gables Three (Model)

4 Bedrooms • 3 Baths • 2-Car Garage • Approximately 2,339 to 2,351 Square Feet

Rosewood
Gables

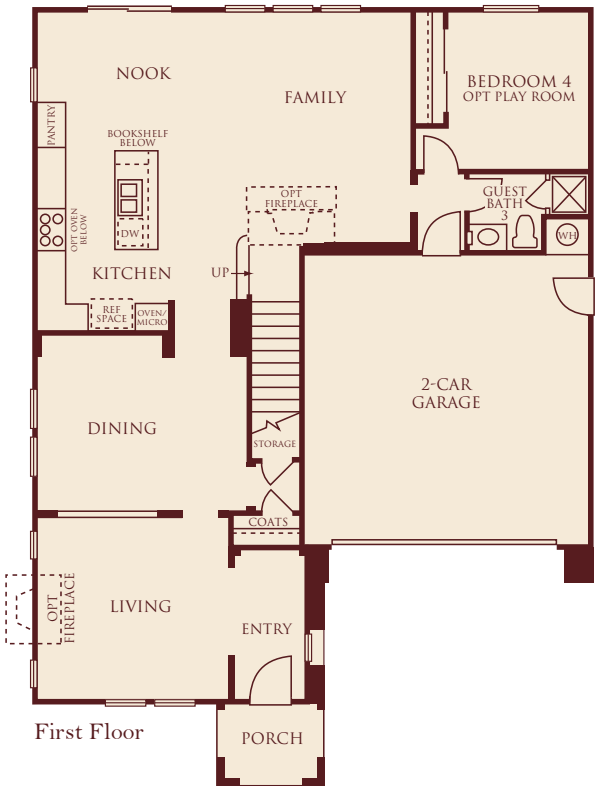
BY SUMMERHILL HOMES



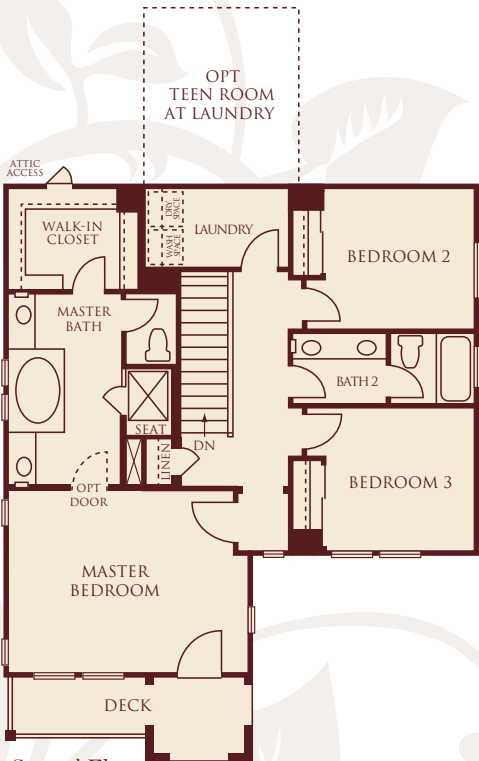
Optional Play Room



Optional Teen Room at Laundry
(As Shown in Model)*



First Floor



Second Floor



SummerHill Homes reserves the right to alter floorplans, specifications, features, prices, and other information described in this brochure without notice or obligation. All room dimensions and home sizes are approximate and may vary depending upon elevations. Windows, room sizes and layouts are subject to change per elevation or flex option. Ask your Community Sales Team for details. All information contained in this brochure is qualified in its entirety by the Seller's Information Statement, which is incorporated herein by this reference. 1/09

Gables Four

4 Bedrooms • 3 Baths • 2-Car Garage • Approximately 2,574 Square Feet

Rosewood
Gables

BY SUMMERHILL HOMES



Gables 4B (Model)



Gables 4C



Gables 4D

All renderings are artist's conception.



SummerHill Homes reserves the right to alter floorplans, specifications, features, prices, and other information described in this brochure without notice or obligation. All room dimensions and home sizes are approximate and may vary depending upon elevations. Windows, room sizes and layouts are subject to change per elevation or flex option. Ask your Community Sales Team for details. All information contained in this brochure is qualified in its entirety by the Seller's Information Statement, which is incorporated herein by this reference. 1/09

Gables Four (Model)

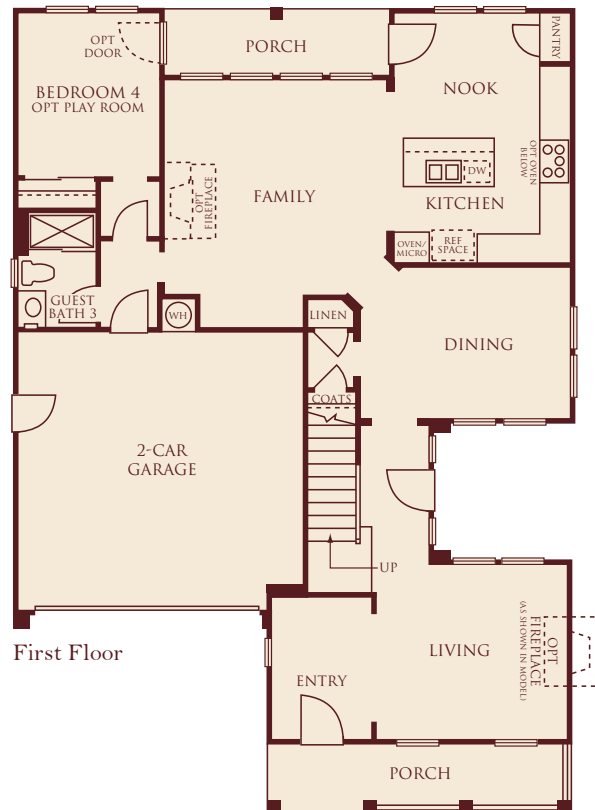
4 Bedrooms • 3 Baths • 2-Car Garage • Approximately 2,574 Square Feet

Rosewood
Gables

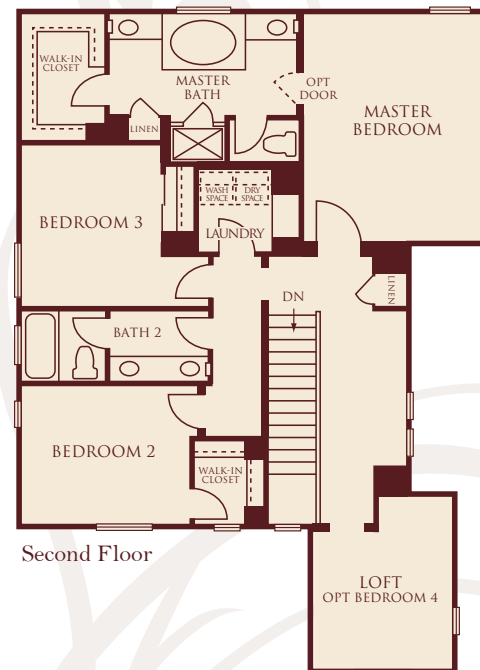
BY SUMMERHILL HOMES



Optional Playroom
at Bedroom 4*



First Floor



Second Floor



Optional Bedroom 4
at Loft*

* Maximum of 4 bedrooms may be selected.

SummerHill Homes reserves the right to alter floorplans, specifications, features, prices, and other information described in this brochure without notice or obligation. All room dimensions and home sizes are approximate and may vary depending upon elevations. Windows, room sizes and layouts are subject to change per elevation or flex option. Ask your Community Sales Team for details. All information contained in this brochure is qualified in its entirety by the Seller's Information Statement, which is incorporated herein by this reference. 1/09



Gables Four (Corner) *Preliminary*

4 Bedrooms • 3 Baths • 2-Car Garage • Approximately 2,552 to 2,564 Square Feet

Rosewood
Gables

BY SUMMERHILL HOMES



Gables 4A CL

All renderings are artist's conception.



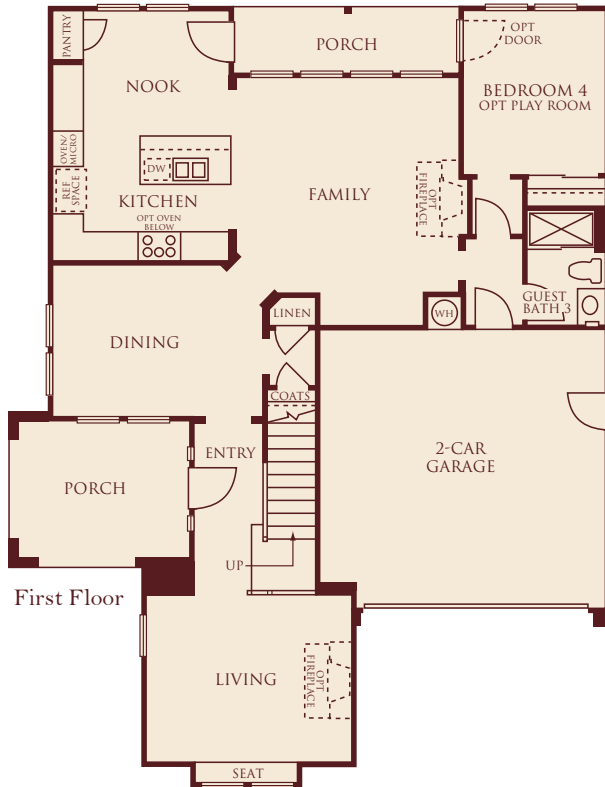
SummerHill Homes reserves the right to alter floorplans, specifications, features, prices, and other information described in this brochure without notice or obligation. All room dimensions and home sizes are approximate and may vary depending upon elevations. Windows, room sizes and layouts are subject to change per elevation or flex option. Ask your Community Sales Team for details. All information contained in this brochure is qualified in its entirety by the Seller's Information Statement, which is incorporated herein by this reference. 1/09

Gables Four (Corner) *Preliminary*

4 Bedrooms • 3 Baths • 2-Car Garage • Approximately 2,552 to 2,564 Square Feet

Rosewood
Gables

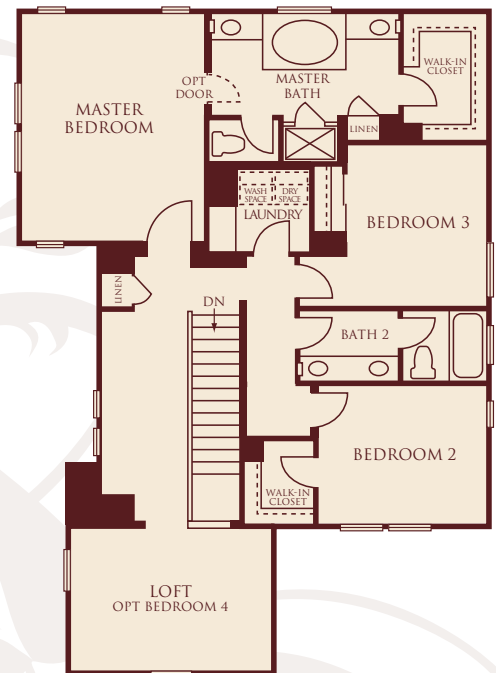
BY SUMMERHILL HOMES



First Floor



Optional Play Room
at Bedroom 4*



Second Floor



Optional Bedroom 4
at Loft*

* Maximum of 4 bedrooms may be selected.

SummerHill Homes reserves the right to alter floorplans, specifications, features, prices, and other information described in this brochure without notice or obligation. All room dimensions and home sizes are approximate and may vary depending upon elevations. Windows, room sizes and layouts are subject to change per elevation or flex option. Ask your Community Sales Team for details. All information contained in this brochure is qualified in its entirety by the Seller's Information Statement, which is incorporated herein by this reference. 1/09



Distinctively Different Exteriors

Beautiful and durable three-coat stucco or Hardiplank® lap siding exteriors with wood detailing, per elevation

Handsome low maintenance, fire-resistant concrete tile, per elevation

Stunning eight-foot Therma-Tru® fiberglass entry door with Venetian bronze handle for an elegant first impression

Two-car garage with architectural style roll-up sectional door, automatic garage door opener, and two remotes

Beautiful front yard landscaping with automatic sprinkler system for a welcoming feel every time you come home

Good neighbor fencing

Inspiring Interiors

Hand-set 12"-square ceramic tile flooring in entry for easy upkeep

Designer-selected, stain-resistant carpet for impressive style and durability

Classically designed stairs with painted handrail, newels, and balusters

Designer-selected lighting package with Decora® light switches to complement your home

Raised two-panel interior doors with polished chrome door knobs

Gourmet Kitchens

Beech recessed panel cabinetry in natural finish offers adjustable upper shelves, pull-out lower shelves next to cooktop, white interior finish, concealed hinges, and easy-glide drawers

Designer-selected 6"-square ceramic tile countertop with full backsplash behind cooktop

Kohler® executive chef kitchen sink with Kohler® gourmet polished chrome pull-out spray faucet

Beautiful GE® stainless steel with black appliances:

- 36" five-burner gas cooktop with hood mounted above
- 30" built-in self-cleaning oven
- Built-in microwave oven
- Deluxe multi-cycle dishwasher

½ h.p. garbage disposal

Spacious pantry, per residence

Hanging fixture with dimmer switch in dining room

Hand-set 12"-square ceramic tile flooring in kitchen and nook

Private Master Suites

Oval Kohler® soaking tub with cultured marble surround, per residence

Shower with seat features cultured marble surround and clear glass shower enclosure with chrome finish, per residence

Beech recessed panel cabinetry in natural finish and cultured marble vanity countertop with backsplash

Top-set dual china sinks with Kohler® faucets in an elegant polished chrome finish

Hand-set 12"-square ceramic tile flooring

Compartmentalized water closet

Large walk-in closets

Secondary Bathrooms

Bathtub with cultured marble surround

Beech recessed panel cabinetry in natural finish with cultured marble vanity top, top-set china sink, and polished chrome faucet

Hand-set 12"-square ceramic tile flooring

Powder room offers Kohler® pedestal sink with polished chrome faucet, oval beveled-edge mirror, and ceramic tile flooring, per residence



Energy-Efficient and Technology Features

Homes meet ENERGY STAR® and ComfortWise® program guidelines increasing energy efficiency of the home

Dual-pane vinyl windows and sliding doors with Low-E glass for improved energy savings

All exterior doors feature full weather stripping

High-efficiency forced-air gas furnace with electronic ignition and energy-efficient electronic set-back thermostat

Pre-wire for air conditioning

Energy-saving 50-gallon gas water heater with recirculation pump to all fixtures

Smoke detectors wired throughout the home for safety

Gas and electric dryer hook-ups

Pre-wire for ceiling fans in living room and master bedroom, per residence

Structured wiring throughout home for high-speed networking including Category 5 cable with universal outlets in media, all bedrooms, and den or loft, per residence

Custom Choices™ Options Program

Certain homes at Rosewood Gables may have been beautifully pre-selected by our Design Studio Team with options and upgrades. Contact the Community Sales and Design Studio Team about available optional features.

Optional glass-enclosed gas appliance fireplace with electric ignition and pre-cast surround, per residence

Decorative tile, granite tile, marble tile, granite slab, and marble slab for countertops and surrounds

Choice of wood, finishes, and cabinet door styles

Glass upper cabinets in kitchen in select pre-determined locations, per residence

GE Profile®, GE Monogram®, Wolf®, and Sub-Zero® stainless steel kitchen appliances

Additional kitchen sink options as shown in Design Studio

Optional pendant lights over island in kitchen

Plumbing fixture finish in kitchen and baths

Instant hot water dispenser or combo instant hot and water filter in kitchen sink

Solid core, raised two-panel interior doors

Choice of brushed nickel or oil-rubbed bronze finish on interior door hardware

Designer-selected interior paint options

Carpet, pad, tile, and hardwood flooring upgrades

All stain-grade handrail, balusters and newels to complement cabinets

Stain-grade handrail and newel posts to complement cabinets with wrought iron balusters

Built-in media cabinet as shown in models, per residence

Crown molding

Jetted tub in master bath

Heavy-duty shower enclosure in master bath

Decorative mirrors in master bath and powder room

Clear glass tub enclosure in secondary baths

Mirrored closet doors in secondary bedrooms

Additional recessed lighting locations, per residence

Light fixture selections

Pre-wire for flat panel television

Speakers and surround sound in select locations

Additional data wiring, multicom ports and optional phone jacks

Pre-wire for security system

Full security system

Central vacuum system

Paint and texture garage interior

Decorative front porch finishes