

The background of the entire image is a monochromatic blue-tinted photograph of a serene landscape. It features several trees with dense foliage, some in the foreground and others further back. In the lower-left portion, a calm body of water, likely a pond or lake, reflects the surrounding trees and sky. The overall mood is peaceful and natural.

# WoodGlen

BY SUMMERHILL HOMES

## THE SUMMERHILL STORY

---

*SummerHill's new communities  
are distinguished by their  
rich character and exceptional  
attention to detail...*

*SummerHill Homes has created a tradition of well planned neighborhoods with dramatic architectural styling built in superior settings throughout the San Francisco Bay Area.*

*SummerHill's new communities are distinguished by their rich character and exceptional attention to detail, lending to the enduring quality of all its homes.*

*For over 25 years, SummerHill Homes' new communities have earned homeowner satisfaction and significant industry recognition, including several Best in American Living Awards from the National Association of Home Builders, numerous Gold Nugget Awards at the Pacific Coast Builders Conference, and several features in national magazines including Builder, Professional Builder, and Sunset Magazine.*



## COMMUNITY STORY

---

Walking to schools, entertainment, and shopping... just minutes to the quaint downtowns of Campbell and Saratoga... a quick drive to the Santa Cruz Mountains. WoodGlen by SummerHill Homes offers all this and more.

WoodGlen is a new home community located near all the conveniences that you desire. Tucked in a well-established West San Jose neighborhood, WoodGlen features two unique new home collections. The Rose Collection is inspired by traditional two-story architectural designs of American Farmhouse, English Cottage, and Italian styles. The Wildflower Collection offers three-story patio homes with classic details and open living areas. Once inside the front door of any WoodGlen home, you will notice that each is well appointed in ways rarely seen today.

**WoodGlen**  
BY SUMMERHILL HOMES

The neighborhood surrounding WoodGlen is as extraordinary as the homes. The community is served by highly-rated schools of the Moreland School District and Campbell Union High School District. Located just moments from Westgate Shopping Center and El Paseo de Saratoga, you'll experience relaxing strolls from shop to shop, or make a quick stop for take-out after a busy day. Minutes from downtown San Jose and with easy access to highways 85 and 17 and Interstate 280, both employment and entertainment options abound.

Though this blend of traditional styling and modern-day convenience may be unique among peers, it's quite typical of every community in the SummerHill Homes collection. And these little extras combined with its superb location will make you want to own a WoodGlen home.

# ROSE COLLECTION

## The Sterling, Residence 1



*Residence 1A*

*artist's conception*



*Residence 1B*

*artist's conception*



*Residence 1C*

*artist's conception*



SummerHill Homes reserves the right to alter floorplans, specifications, features, prices and other information described in this brochure without notice or obligation. All room dimensions and home sizes are approximate and may vary depending upon elevation. Window, room sizes, and layouts are subject to change per elevation or flex option. Ask your Community Sales Manager for details. All information contained in this brochure is qualified in its entirety by the Seller's Information Statement, which is incorporated herein by this reference. 05/05



## The Sterling, Residence 1

Summer nights on your front porch and casual living within the spacious Great Room and gourmet-inspired kitchen with center island. This home offers a wonderful balance of entertainment and quiet relaxation. Upstairs, the three secondary bedrooms provide ample room for family and guests alike. And you will find the serenity you need in the master suite with large walk-in closet, soaking tub, and dual vanity.

Approximately  
2,180 – 2,222  
square feet

4 Bedrooms

2½ Baths

Formal Living Room  
with Fireplace

Great Room

Kitchen with Island

2-Car Garage



*First Floor*



*Second Floor*



# ROSE COLLECTION

## The Ambrosia, Residence 2



*Residence 2A*

*artist's conception*



*Residence 2B*

*artist's conception*



*Residence 2C (model)*

*artist's conception*



SummerHill Homes reserves the right to alter floorplans, specifications, features, prices and other information described in this brochure without notice or obligation. All room dimensions and home sizes are approximate and may vary depending upon elevation. Window, room sizes, and layouts are subject to change per elevation or flex option. Ask your Community Sales Manager for details. All information contained in this brochure is qualified in its entirety by the Seller's Information Statement, which is incorporated herein by this reference. 05/05



## The Ambrosia, Residence 2 (Model)

Enter a world where formal entertainment and family living beautifully merge into one home. Tile entry, welcoming fireplace, and grand front windows create a stylish ambiance you'll be proud to show off. The spacious family area flows easily from the family room, through the eat-in nook to the gourmet kitchen. Upstairs, the laundry room is perfectly located near the four bedrooms, including the master suite with large walk-in closet and soaking tub overlooking the rear yard.

Approximately  
2,338 – 2,353  
square feet

4 Bedrooms

2½ Baths

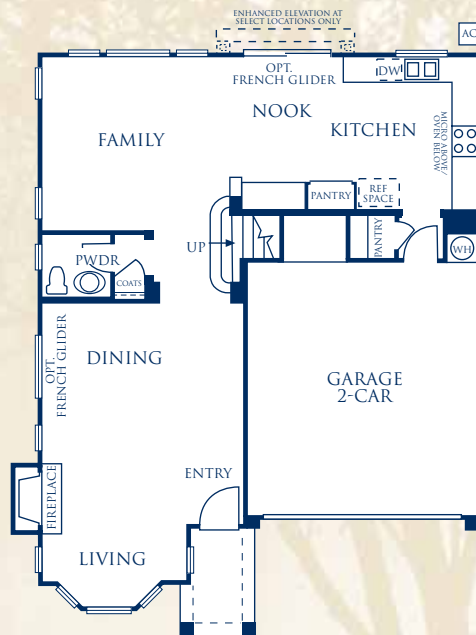
Family Room

Formal Living Area  
with Fireplace

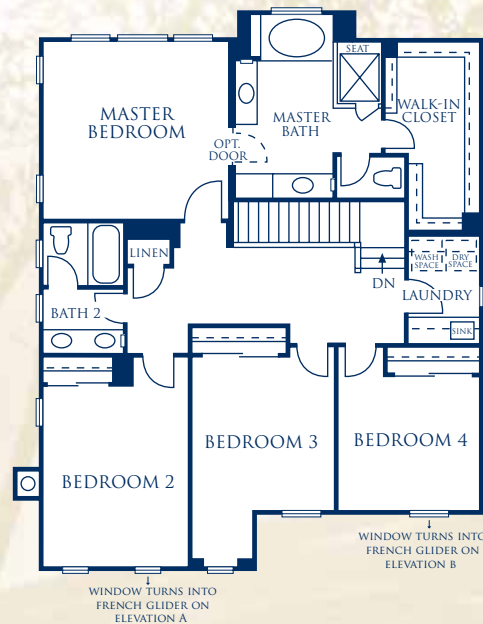
Formal Dining Area

Nook

2-Car Garage



*First Floor*



*Second Floor*



# ROSE COLLECTION

## The Winsome, Residence 3



*Residence 3A*

*artist's conception*



*Residence 3B (model)*

*artist's conception*



*Residence 3C*

*artist's conception*



SummerHill Homes reserves the right to alter floorplans, specifications, features, prices and other information described in this brochure without notice or obligation. All room dimensions and home sizes are approximate and may vary depending upon elevation. Window, room sizes, and layouts are subject to change per elevation or flex option. Ask your Community Sales Manager for details. All information contained in this brochure is qualified in its entirety by the Seller's Information Statement, which is incorporated herein by this reference. 05/05



## The Winsome, Residence 3 (Model)

Architectural details add to the beauty of this home, with a formal butler's pantry, second story deck off bedroom two, and an exquisitely designed master bedroom suite. With the fifth bedroom and private bath on the first floor, you'll have the space for extended family or guests. Inviting fireplace in the formal living area, media niche in the family room, and abundant closet space add to the feeling of pampered luxury.

Approximately  
2,617 square feet

5 Bedrooms

3 Baths

Formal Living Area  
with Fireplace

Dining Area

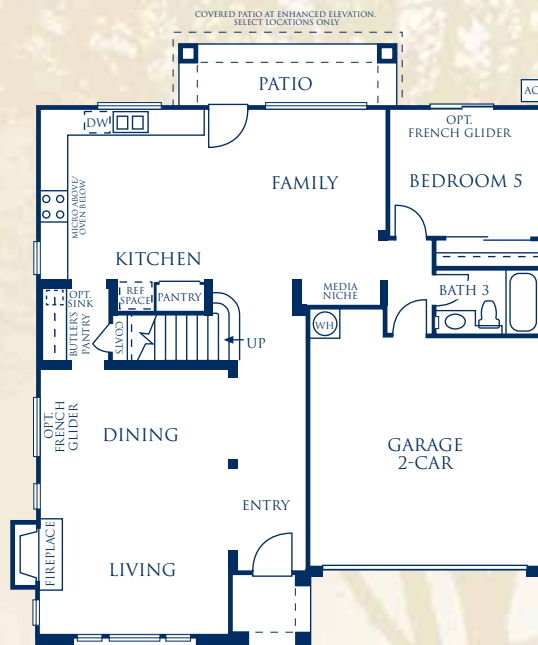
Family Room

Butler's Pantry

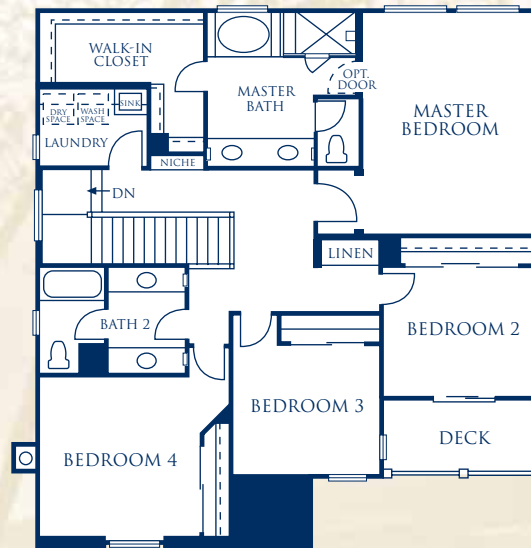
Downstairs Bedroom  
with Adjacent Bath

Optional Super  
Family Room

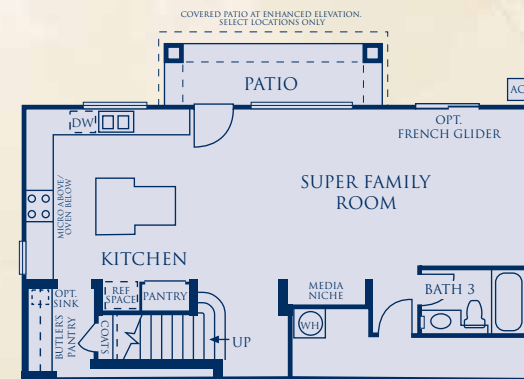
2-Car Garage



First Floor



Second Floor



Optional Super Family Room



# ROSE COLLECTION

## Distinctively Different Exteriors

*At SummerHill Homes, we believe a great home begins with timeless design. We've embellished the homes in the Rose Collection at WoodGlen with tasteful details that will provide years of enjoyment -- and a feeling of pride every time you come home.*

- Homes feature distinctive architectural styling designed and built in the award-winning SummerHill Homes tradition
- Handsome low maintenance, fire-resistant concrete tile roof for lasting beauty and protection
- Beautiful and durable 3-coat stucco with wood and iron detailing, per elevation
- Eight-foot, raised six-panel fiberglass entry door with oil rubbed bronze handle for elegant first impression, per residence
- Two-car garage with steel insulated door with window lites and automatic garage door opener with two remotes, per elevation
- Beautifully landscaped front yard for a welcoming feel every time you come home
- Good neighbor fencing with entry gate

## Inspiring Interiors

*High ceilings make interior spaces inviting. Rooms are arranged to keep the family close – while providing plenty of privacy.*

- Three exciting and functional floorplans that include open living spaces
- Hand-set 12" x 12" ceramic tile flooring in entry for easy upkeep
- Designer-selected stain-resistant carpet for impressive style and durability
- Classically-designed stairs with choice of painted or stained (to complement cabinets) handrail and painted balusters, per residence

- Cozy, glass-enclosed gas appliance fireplace with electric ignition and pre-cast surround
- Graceful, rounded wall corners throughout for a look of elegance and craftsmanship
- Lightly textured wall finish with designer-selected two-color paint for richness and character
- Convenient recessed lighting throughout home for abundant light, per residence
- Pre-wire for ceiling fan in family room and master bedroom
- Raised panel interior doors with polished chrome door knobs

## Gourmet Kitchens

*The kitchen is the "heart of the home," a place for the family to gather and share the events of the day.*

- Maple recessed panel cabinetry with caramel stain, white interior lining, adjustable upper shelves, concealed hinges, easy-glide drawers, and bread board, per residence
- Designer-selected, hand-set, 6" x 6" ceramic tile countertops with full backsplash behind cooktop
- Kohler Executive Chef™ cast iron dual compartment kitchen sink with gourmet pull-out chrome faucet
- Beautiful white, black, or black on stainless steel Whirlpool® appliances including:
  - 30" glass, four-burner gas cooktop with sealed burners for quick clean-up
  - Built-in vented microwave-hood combination
  - 30" built-in self-cleaning electric oven
  - Deluxe multi-cycle dishwasher
- 1/2 h.p. garbage disposal
- Spacious storage pantry

- Durable, hand-set, 12" x 12" ceramic tile flooring in kitchen
- Under-cabinet task lighting puts light where you need it, per residence
- Refrigerator space plumbed for ice maker for easy installation

## Private Master Suites

*Welcome to your private domain. Rose Collection master suites surround you with comfort – a welcome respite from your busy day. Stylish bath fixtures add a distinctive touch of class.*

- Shower with clear glass enclosure with hand-set ceramic tile or cultured marble surround
- Kohler® oval soaking tub with hand-set ceramic tile or cultured marble surround
- Designer-selected, hand-set ceramic tile or cultured marble vanity countertop with top-set dual china sinks
- Kohler® faucets in an elegant polished chrome finish
- Beveled mirror with decorative light bar over sinks, per residence
- Convenient recessed medicine cabinet with beveled edge
- Hand-set 12" x 12" ceramic tile flooring
- Walk-in closet with mirrored door and thoughtfully designed shelving helps make organizing and storing easy, per residence





# FEATURES

## Secondary Baths

*Natural beauty and long-lasting durability can be found in the home's secondary baths.*

- Steel enamel tub with cultured marble surround for easy care
- Cultured marble vanity top with top-set china sink and Kohler® polished chrome faucet
- Convenient recessed medicine cabinet with beveled edge
- Designer-selected light fixtures
- Hand-set 12" x 12" ceramic tile flooring
- Powder room offers pedestal sink accented by an oval mirror with beveled edge and ceramic tile flooring, per residence

## Additional Features

*Each home is filled with the extra features you expect in a quality home.*

- Structured wiring throughout the whole house for high-speed networking including dual Category 5 and RG6 cable with universal outlets in media niche and all bedrooms, per residence
- Laundry area with upper cabinets, ceramic tile countertop, and sink
- Gas and electric dryer hook-ups
- Home is pre-wired for security system
- Air conditioning

## Energy Saving and Safeguard Features

*Thoughtfully crafted to meet today's efficiency and safety needs.*

- Homes meet ComfortWise<sup>SM</sup> ENERGY STAR® program guidelines increasing energy efficiency of the home
- Dual-paned vinyl windows with Low-E glass for improved energy savings
- Forced air gas furnace with electronic ignition and energy-efficient electronic set-back thermostat
- Energy saving 50-gallon gas water heater
- Smoke detectors wired throughout the home for safety

## Customizing Options and Upgrades

*Personalize your home to fit your individual lifestyle through the Custom Choices<sup>TM</sup> Options Program.*

- Decorative tile, granite tile or slab, and marble tile or slab for countertops and surrounds
- Choice of wood, finishes, and cabinet door styles
- Stainless steel kitchen appliances
- Refrigerator, washer and dryer
- Two-color interior paint options
- Carpet, pad, tile, and hardwood flooring upgrades
- Plumbing fixture finish in kitchen and baths
- Jetted tub in master bath
- Heavy-duty, clear glass shower enclosure for master bath
- Clear glass tub enclosure with chrome or brushed nickel accents in secondary baths

- Stain-grade balusters to complement cabinets
- Crown molding, per residence
- Media cabinets in living room, per residence
- Additional fireplace surrounds and mantels, per residence
- Additional recessed lighting locations, per residence
- Pre-wiring for speakers and surround sound in select locations
- Speaker and surround sound packages
- Additional multicom ports and optional phone jacks
- Full security system
- Decorative porch and driveway detailing
- Hardscape options for front and back yards

*...And, much more. Contact the WoodGlen Community Sales Manager for details of which optional features are available. Certain homes at WoodGlen may have been beautifully pre-selected with many options and upgrades.*





# WILDFLOWER COLLECTION

## The Poppy, Residence 1 Preliminary



*Residence 1A*

*artist's conception*



*Residence 1B*

*artist's conception*



*Residence 1C*

*artist's conception*



SummerHill Homes reserves the right to alter floorplans, specifications, features, prices and other information described in this brochure without notice or obligation. All room dimensions and home sizes are approximate and may vary depending upon elevation. Window, room sizes, and layouts are subject to change per elevation or flex option. Ask your Community Sales Manager for details. All information contained in this brochure is qualified in its entirety by the Seller's Information Statement, which is incorporated herein by this reference. 05/05



# The Poppy, Residence 1

Preliminary

The welcoming front entrance of this beautiful home sets the tone for comfortable, casual living. The inviting foyer steps up into the living room, complete with a fireplace that will beckon you on cool autumn nights. Your own private deck off the dining room brings the garden indoors. Three bedrooms including the master suite complete the upstairs. And, the garage level offers an abundance of storage space.

Approximately  
1,740 square feet

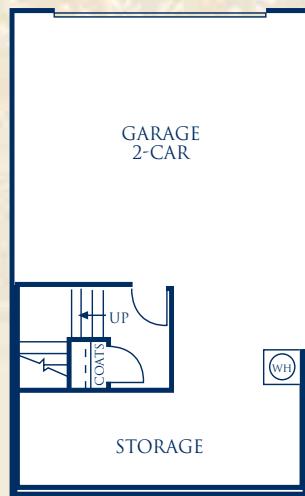
3 Bedrooms

2½ Baths

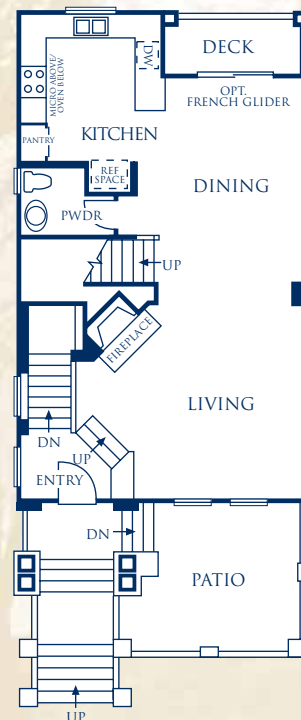
Living Room with  
Fireplace

Dining Room

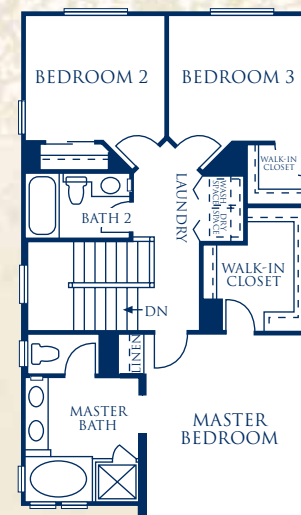
2-Car Garage with  
Extra Storage Area



Garage Level



First Floor



Second Floor



# WILDFLOWER COLLECTION

## The Sunflower, Residence 3

Preliminary



*Residence 3A (model)*

*artist's conception*



*Residence 3B*

*artist's conception*



*Residence 3C*

*artist's conception*



SummerHill Homes reserves the right to alter floorplans, specifications, features, prices and other information described in this brochure without notice or obligation. All room dimensions and home sizes are approximate and may vary depending upon elevation. Window, room sizes, and layouts are subject to change per elevation or flex option. Ask your Community Sales Manager for details. All information contained in this brochure is qualified in its entirety by the Seller's Information Statement, which is incorporated herein by this reference. 05/05



## The Sunflower, Residence 3 (Model)

Preliminary

For those who love outdoor entertaining, this home is perfect. Between the large traditional front patio and the spacious deck off the dining room, the living and dining areas open up to provide expansive room for entertaining. The gourmet kitchen opens to the dining room, providing the chef the opportunity to socialize with guests. The fourth bedroom on the first floor gives overnight guests privacy. And, the garage level adds unexpected storage.

Approximately  
2,030-2,039  
square feet

4 Bedrooms

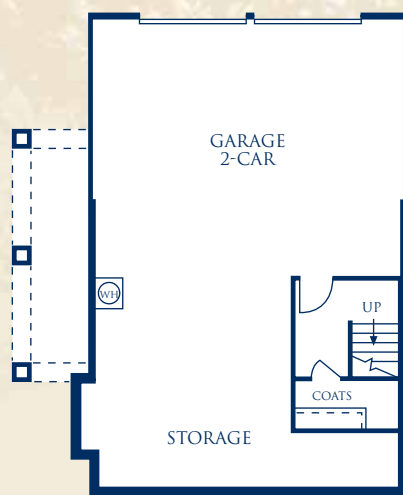
3 Baths

Dining Room with  
Adjacent Deck

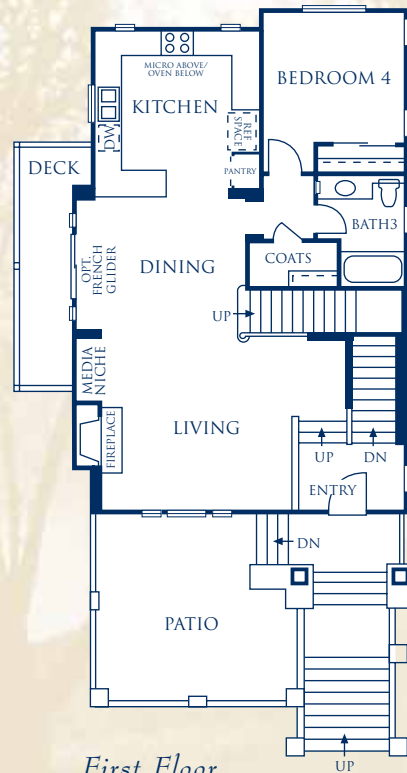
Living Room with  
Fireplace

Downstairs Bedroom  
with Adjacent Bath

2-Car Garage with  
Extra Storage Area



*Garage Level*



*First Floor*



*Second Floor*



# WILDFLOWER COLLECTION

## Distinctively Different Exteriors

*At SummerHill Homes, we believe a great home begins with timeless design. We've embellished the homes in the Wildflower Collection at WoodGlen with tasteful details that will provide years of enjoyment -- and a feeling of pride every time you come home.*

- Homes feature distinctive architectural styling designed and built in the award-winning SummerHill Homes tradition
- Handsome low maintenance, fire-resistant concrete tile roof for lasting beauty and protection
- Beautiful and durable 3-coat stucco with stone or brick veneers, and wood and iron detailing, per elevation
- Eight-foot, raised six-panel fiberglass entry door with oil rubbed bronze handle for elegant first impression, per residence
- Two-car garage with steel insulated door with window lites and automatic garage door opener with two remotes, per elevation
- Beautifully landscaped common area for gathering with friends and neighbors
- Inviting front porch and spacious deck or patio, per residence

## Inspiring Interiors

*High ceilings make interior spaces inviting. Rooms are arranged to keep the family close – while providing plenty of privacy.*

- Two exciting and functional floorplans that include open living spaces
- Hand-set 12" x 12" ceramic tile flooring in entry for easy upkeep
- Designer-selected, stain-resistant carpet for impressive style and durability

- Classically-designed stairs with choice of painted or stained (to complement cabinets) handrail and painted balusters, per residence
- Cozy, glass-enclosed gas appliance fireplace with electric ignition and pre-cast surround
- Graceful, rounded wall corners throughout for a look of elegance and craftsmanship
- Lightly textured wall finish with designer-selected two-color paint for richness and character
- Convenient recessed lighting throughout home for abundant light, per residence
- Pre-wire for ceiling fan in master bedroom
- Raised panel interior doors with polished chrome door knobs

## Gourmet Kitchens

*The kitchen is the "heart of the home," a place for the family to gather and share the events of the day.*

- Maple recessed panel cabinetry with caramel stain, white interior lining, adjustable upper shelves, concealed hinges, easy-glide drawers, and bread board, per residence
- Designer-selected, hand-set, 6" x 6" ceramic tile countertops with full backsplash behind cooktop
- Kohler Executive Chef™ cast iron dual compartment kitchen sink with gourmet pull-out chrome faucet
- Beautiful white, black, or black on stainless steel Whirlpool® appliances including:
  - 30" glass, four-burner gas cooktop with sealed burners for quick clean-up
  - Built-in vented microwave-hood combination
  - 30" built-in self-cleaning electric oven
  - Deluxe multi-cycle dishwasher

- 1/2 h.p. garbage disposal
- Durable, hand-set, 12" x 12" ceramic tile flooring in kitchen
- Under-cabinet task lighting puts light where you need it, per residence
- Refrigerator space plumbed for ice maker for easy installation

## Private Master Suites

*Welcome to your private domain. Wildflower Collection master suites surround you with comfort – a welcome respite from your busy day. Stylish bath fixtures add a distinctive touch of class.*

- Shower with clear glass enclosure with cultured marble surround
- Kohler® oval soaking tub with cultured marble surround
- Designer-selected cultured marble vanity countertop with bullnose edge and backsplash
- Top-set dual china sinks with Kohler® faucets in an elegant polished chrome finish
- Beveled mirror with decorative light bar over sinks, per residence
- Convenient recessed medicine cabinet with beveled edge
- Hand-set 12" x 12" ceramic tile flooring
- Walk-in closet with thoughtfully designed shelving helps make organizing and storing easy, per residence





# FEATURES

## Secondary Baths

*Natural beauty and long-lasting durability can be found in the home's secondary baths.*

- Steel enamel tub with cultured marble surround for easy care
- Cultured marble vanity top with top-set china sink and Kohler® polished chrome faucet, per residence
- Convenient recessed medicine cabinet with beveled edge
- Designer-selected light fixtures
- Hand-set 12" x 12" ceramic tile flooring
- Powder room offers pedestal sink accented by an oval mirror with beveled edge and ceramic tile flooring, per residence

## Additional Features

*Each home is filled with the extra features you expect in a quality home.*

- Structured wiring throughout the whole house for high-speed networking including dual Category 5 and RG6 cable with universal outlets in media niche and all bedrooms, per residence
- Laundry room with upper cabinets
- Gas and electric dryer hook-ups
- Home is pre-wired for security system
- Air conditioning

## Energy Saving and Safeguard Features

*Thoughtfully crafted to meet today's efficiency and safety needs.*

- Homes meet ComfortWise<sup>SM</sup> ENERGY STAR® program guidelines increasing energy efficiency of the home
- Dual-paned vinyl windows with Low-E glass for improved energy savings
- Forced air gas furnace with electronic ignition and energy-efficient electronic set-back thermostat
- Energy saving 50-gallon gas water heater
- Smoke detectors wired throughout the home for safety

## Customizing Options and Upgrades

*Personalize your home to fit your individual lifestyle through the Custom Choices<sup>TM</sup> Options Program.*

- Decorative tile, granite tile or slab, and marble tile or slab for countertops and surrounds
- Choice of wood, finishes, and cabinet door styles
- Stainless steel kitchen appliances
- Refrigerator, washer and dryer
- Two-color interior paint options
- Carpet, pad, tile, and hardwood flooring upgrades
- Plumbing fixture finish in kitchen and baths
- Jetted tub in master bath
- Heavy-duty clear glass shower enclosure for master bath
- Clear glass tub enclosure with chrome or brushed nickel accents in secondary baths

- Stain-grade balusters to complement cabinets
- Crown molding, per residence
- Media cabinets in living room, per residence
- Additional fireplace surrounds and mantels, per residence
- Additional recessed lighting locations, per residence
- Pre-wiring for speakers and surround sound in select locations
- Speaker and surround sound packages
- Additional multicom ports and optional phone jacks
- Full security system

*...And, much more. Contact the WoodGlen Community Sales Manager for details of which optional features are available. Certain homes at WoodGlen may have been beautifully pre-selected with many options and upgrades.*







4732 CAMPBELL AVENUE, SAN JOSÉ, CA 95130 • 408-374-5300 • FAX 408-374-5303  
WOODGLENSALES@SHHOMES.COM • SUMMERHILLHOMES.COM

