

# THE TOWNS

@ AVONDALE  
BY SUMMERHILL HOMES



CONTEMPORARY ARCHITECTURE



SUMMERHILL HOMES<sup>SM</sup>

WWW.SUMMERHILLHOMES.COM

## WELCOME TO THE TOWNS AT AVONDALE

Located in the up and coming mid-Peninsula city of Redwood City, with a growing local employment base, easy commute access, and increasingly vibrant and upscale downtown, The Towns at Avondale is the perfect place to call home!

The Towns at Avondale will offer:

**12 TOWNHOMES**

**3 BEDROOMS • 2.5-3.5 BATHS**

**SIDE BY SIDE 2 CAR GARAGE**

**IN APPROXIMATELY 1,638-1,973 SQ. FT.**

**ONE 2 BEDROOM - 2 BATH - 1 CAR GARAGE + 1 CARPORT**

*DOWNSTAIRS BEDROOM • DECKS • PRIVATE COURTYARDS PER PLAN*

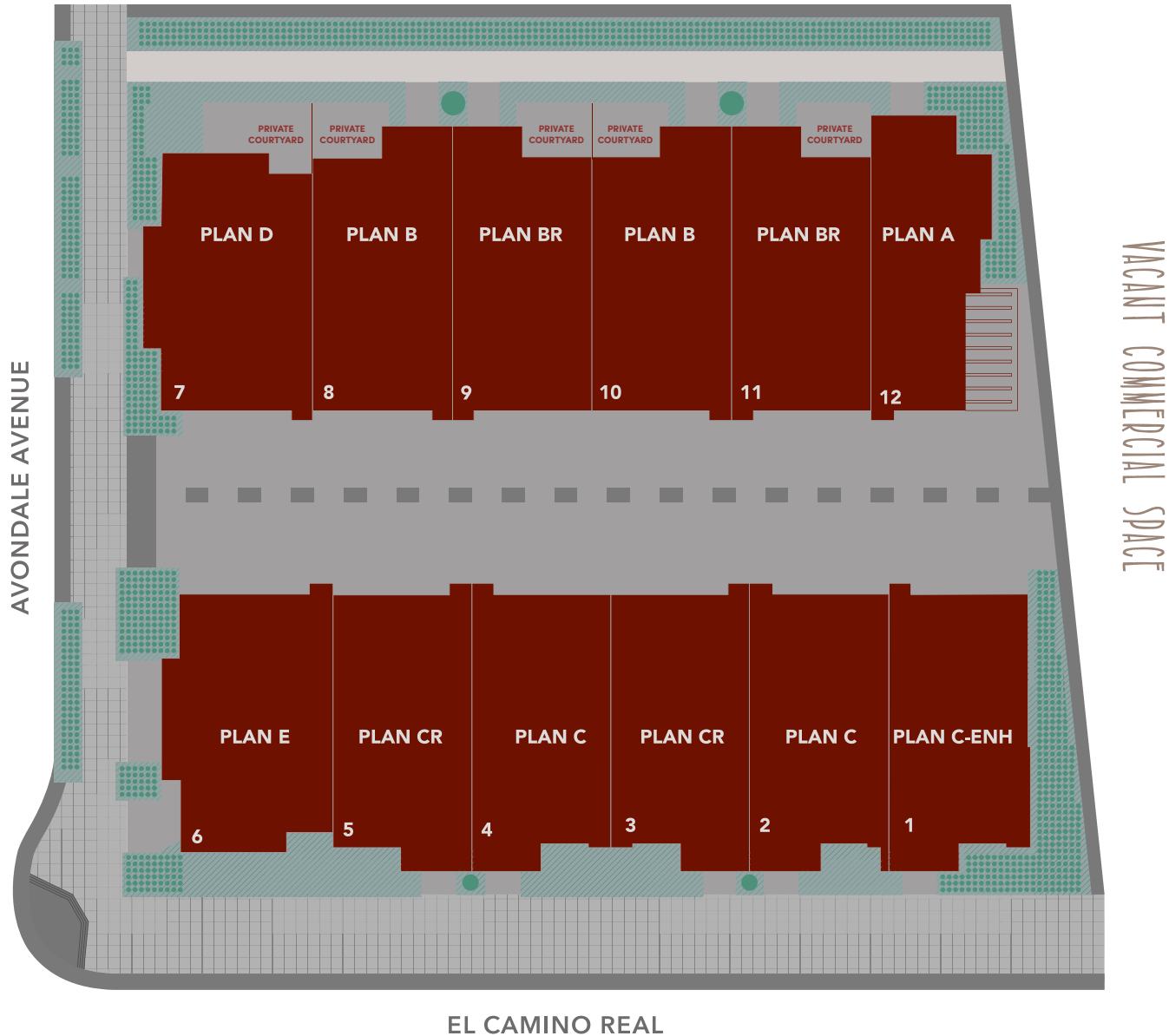


AVONDALESALES@SHHOMES.COM • 650.269.7388 • 150 EL CAMINO REAL, REDWOOD CITY, CA 94062

SummerHill Homes reserves the right to alter plans, specifications, features, prices, and other information described in this brochure without notice or obligation. All renderings are artist's conception. All dimensions and sizes are approximate and may vary. Not to scale. Locations, distances, and layouts are subject to change. Ask the Community Sales Team for details. All information contained in this brochure is qualified in its entirety by the Seller's Information Statement, which is incorporated herein by this reference. BRE# 01301389 4/18



EXISTING NEIGHBORHOOD



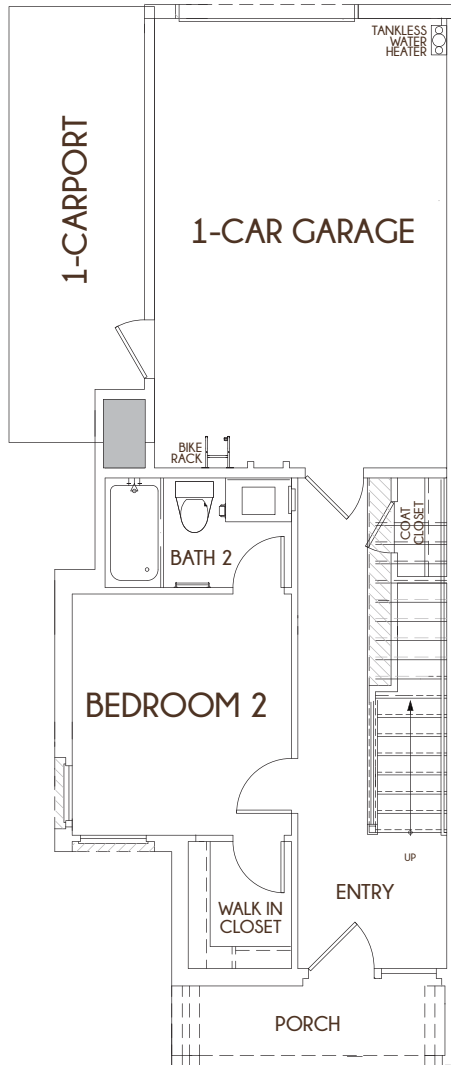
AVONDALESALES@SHHOMES.COM • 150 EL CAMINO REAL, REDWOOD CITY

SummerHill Homes reserves the right to alter plans, specifications, features, prices, and other information described in this brochure without notice or obligation. All renderings are artist's conception. All dimensions and sizes are approximate and may vary. Not to scale. Locations, distances, and layouts are subject to change. Ask the Community Sales Team for details. All information contained in this brochure is qualified in its entirety by the Seller's Information Statement, which is incorporated herein by this reference. BRE# 01301389 4/18

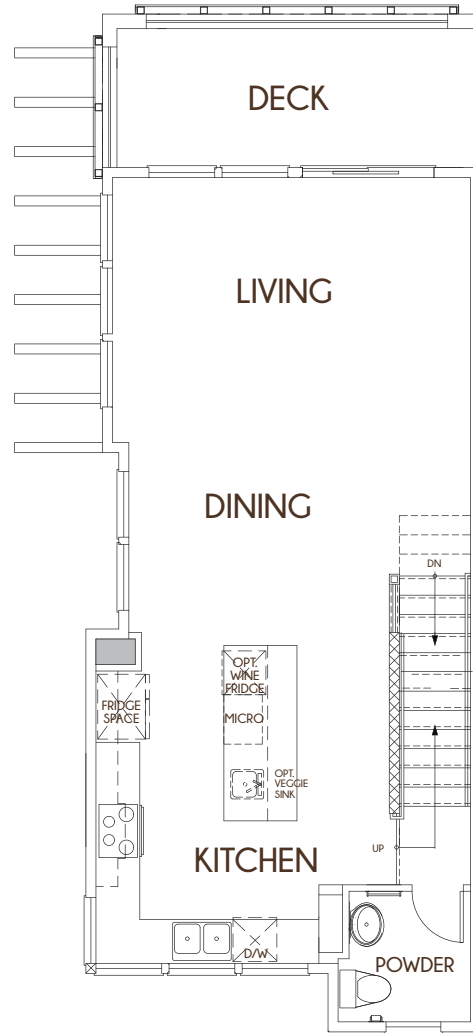


# PLAN A • 2 BEDROOMS + LOFT - 2.5 BATHS • 1,638 SQ. FT. APPROX.

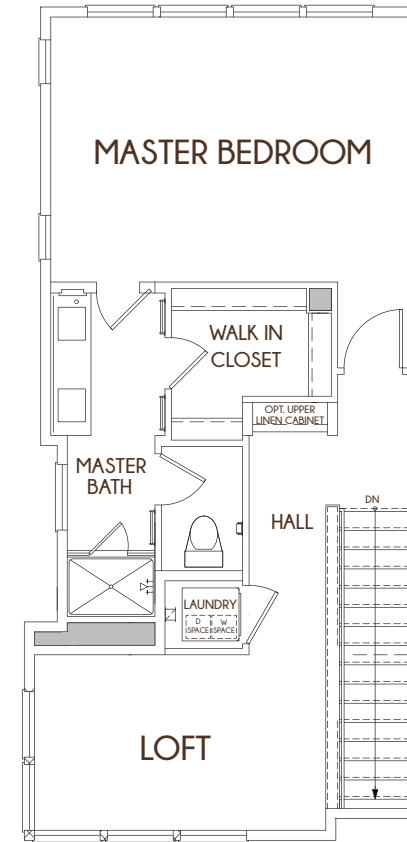
FIRST



SECOND



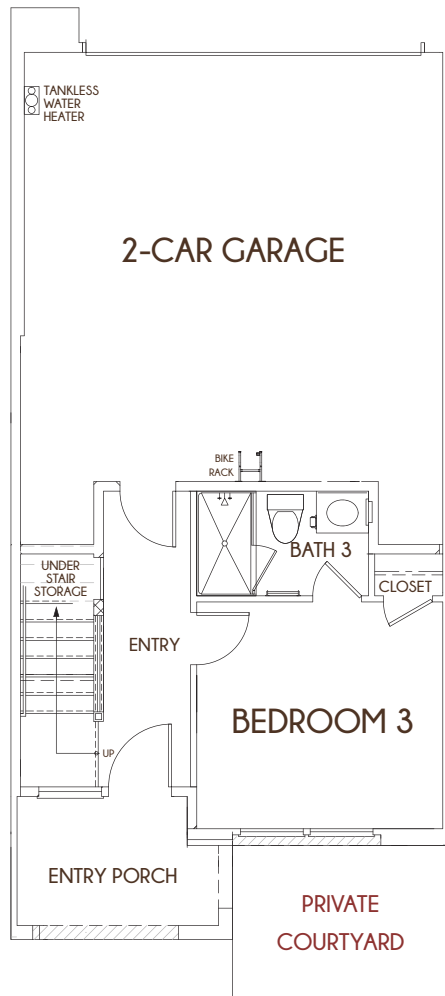
THIRD



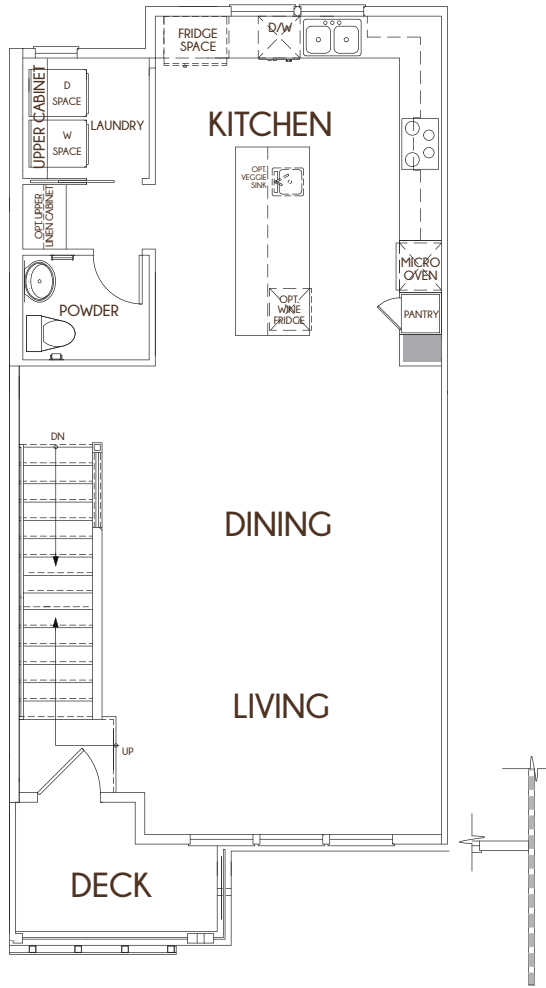
# PLAN B • 3 BEDROOMS - 3.5 BATHS • 1,860 SQ. FT. APPROX.

+ PRIVATE COURTYARD

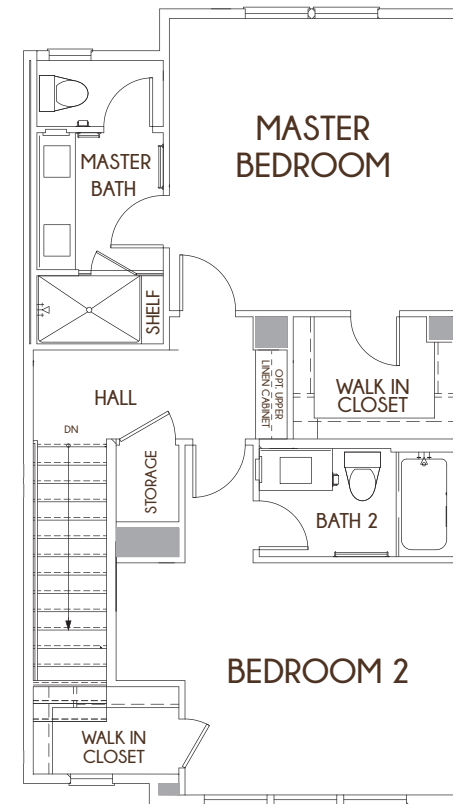
FIRST



SECOND



THIRD

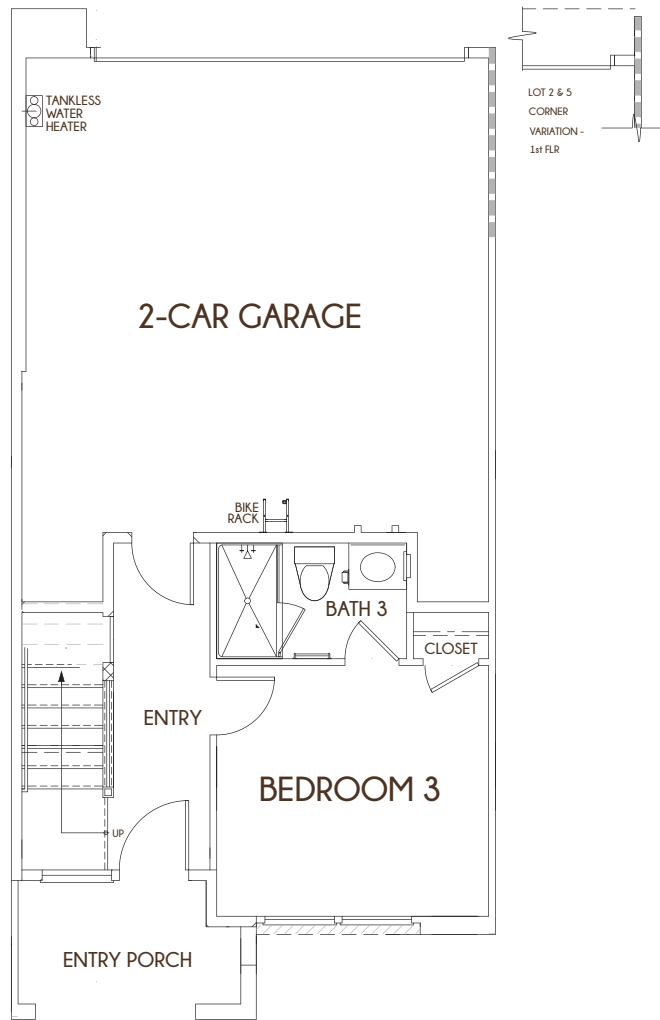


1.5 FLD LOT II CORNER VARIATION

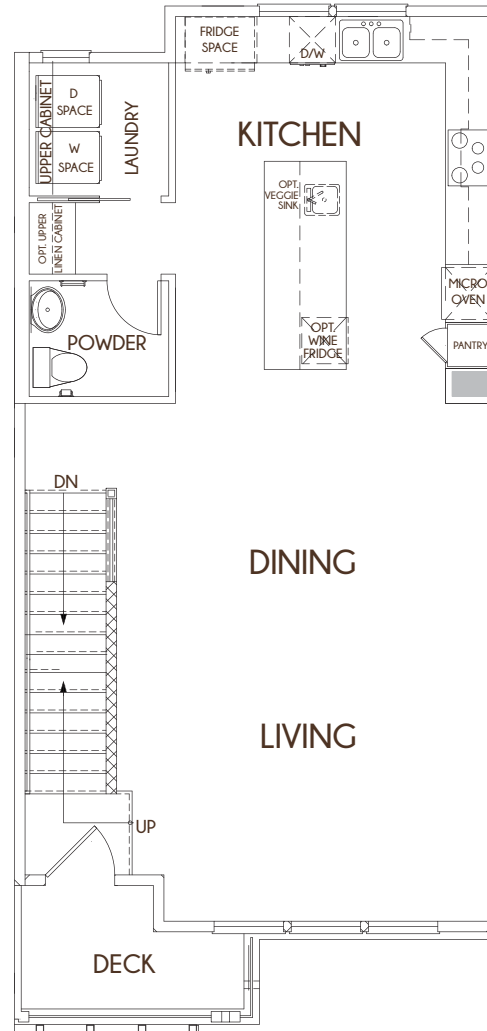


# PLAN C • 3 BEDROOMS - 3.5 BATHS • 1,896 SQ. FT. APPROX.

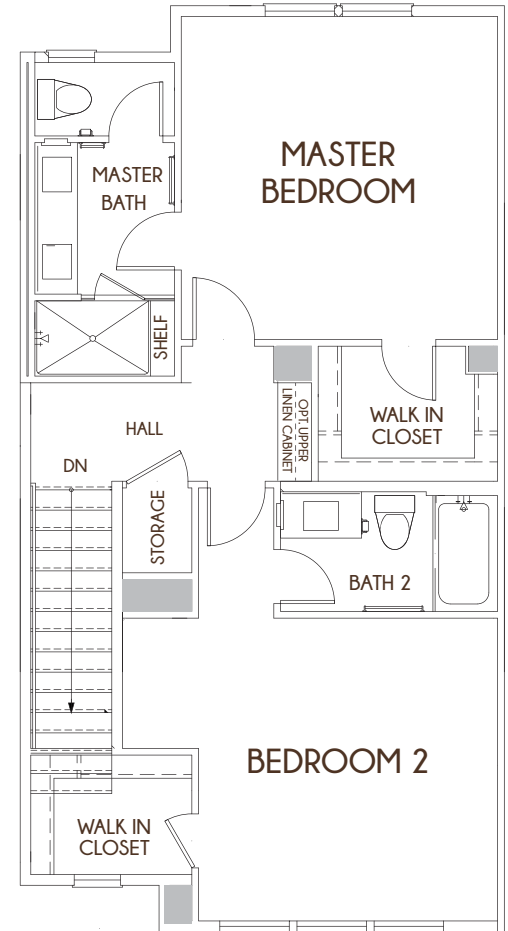
FIRST



SECOND

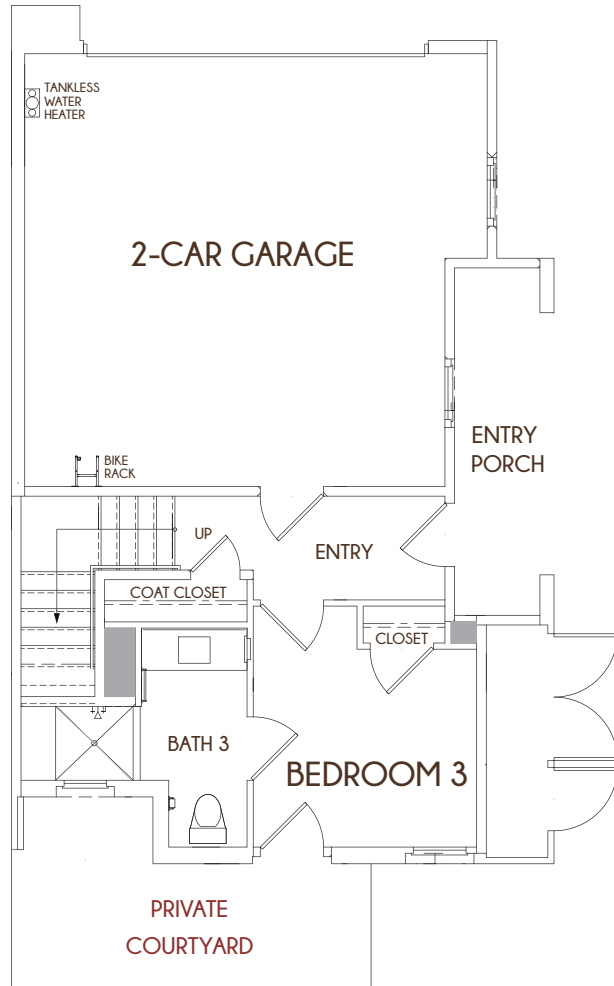


THIRD

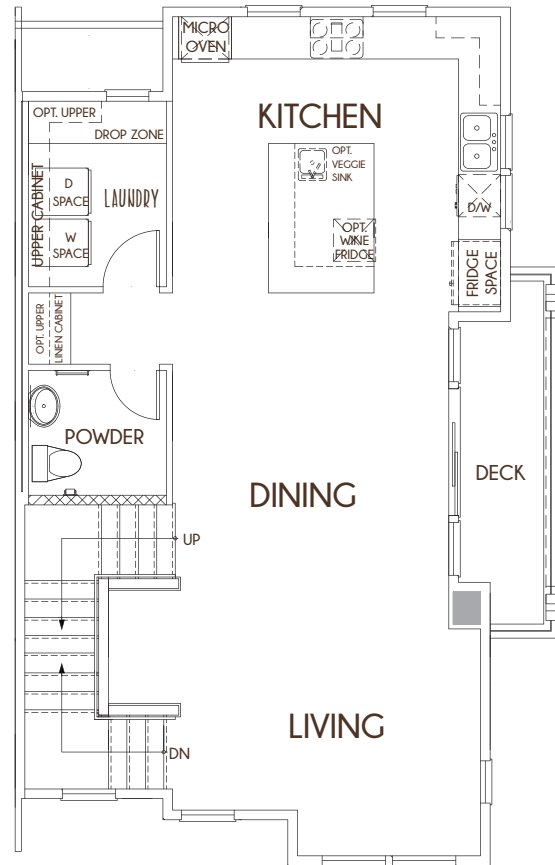


# PLAN D • 3 BEDROOMS - 3.5 BATHS • 1,951 SQ. FT. APPROX. YARD + PRIVATE COURTYARD

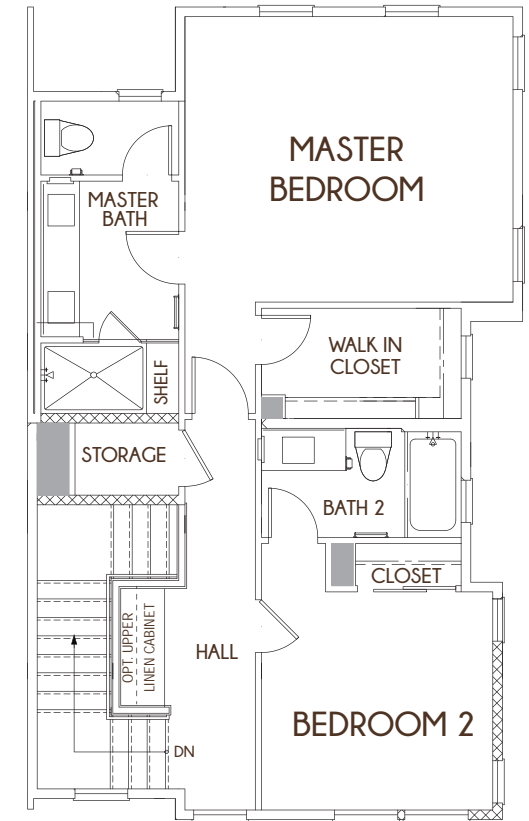
FIRST



SECOND

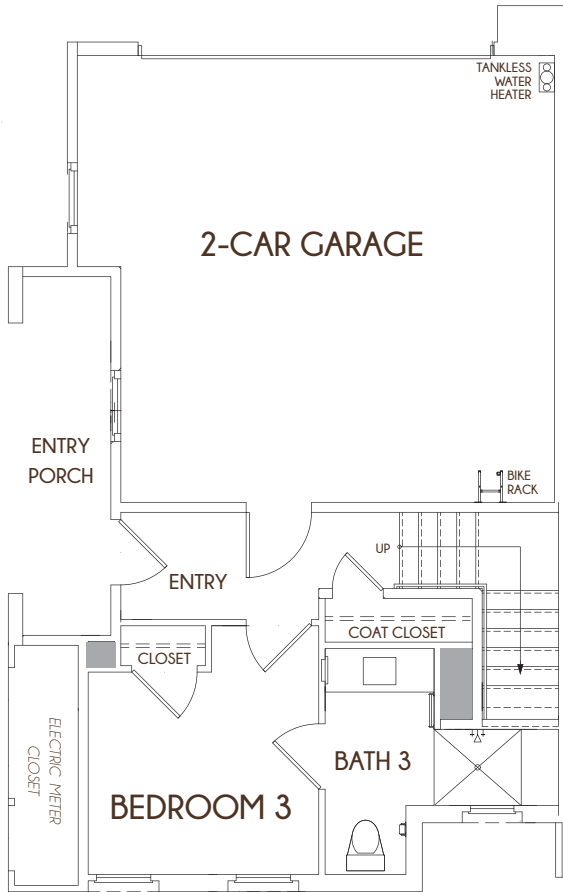


THIRD

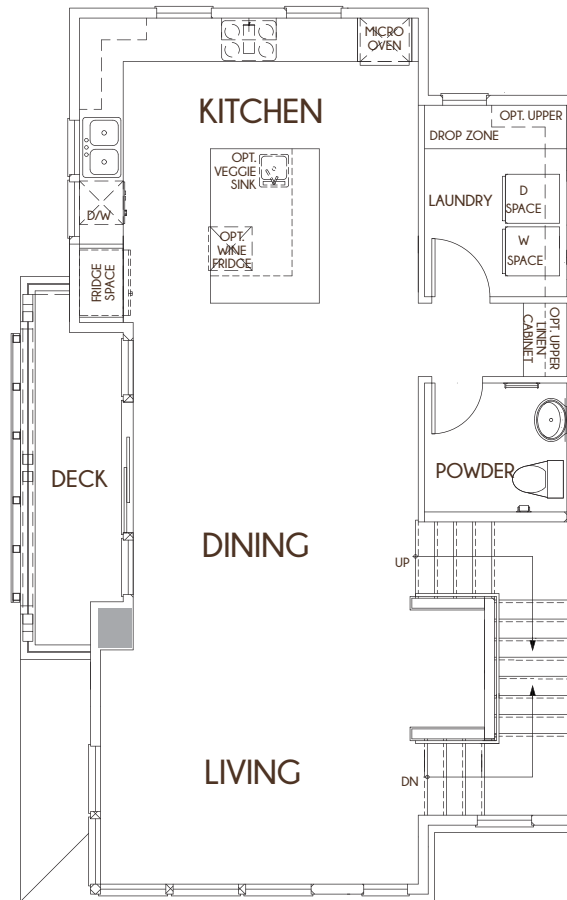


# PLAN E • 3 BEDROOMS - 3.5 BATHS • 1,997 SQ. FT. APPROX.

FIRST



SECOND



THIRD

